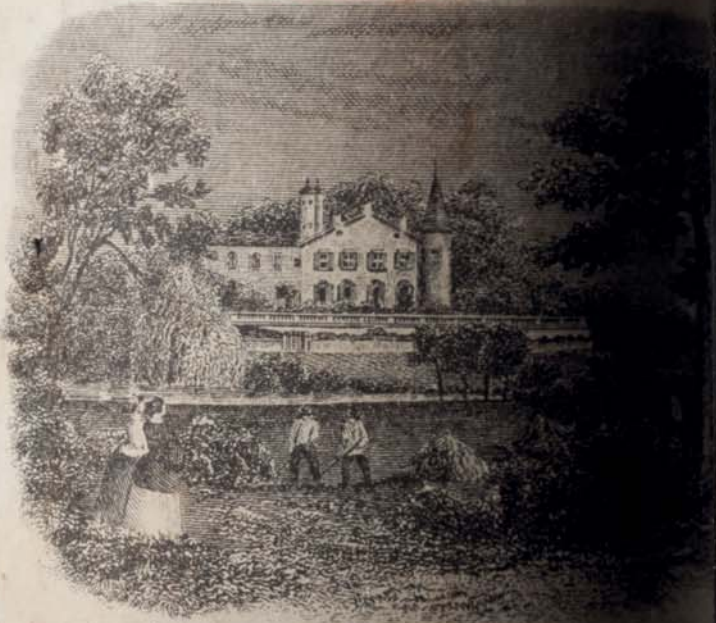


# FINE WINES AND SPIRITS

Featuring Rarities Direct from  
The Cellars of Champagne Henriot

*New York · 10 June 2016*

MIS EN BOUTEILLE AU CHATEAU

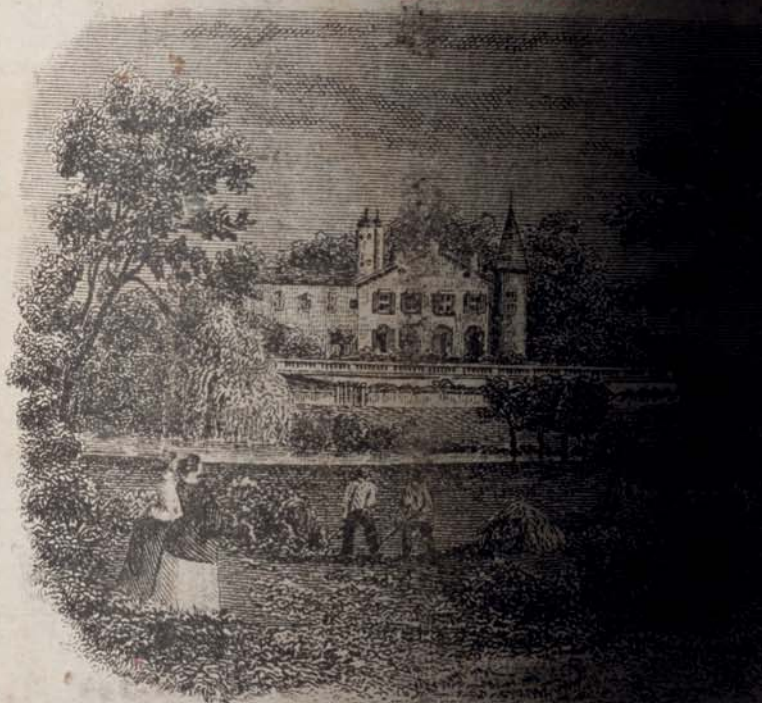


CHATEAU LAFITE - ROTHSCHILD

1945

APPELLATION PAUILLAC CONTRÔLÉE

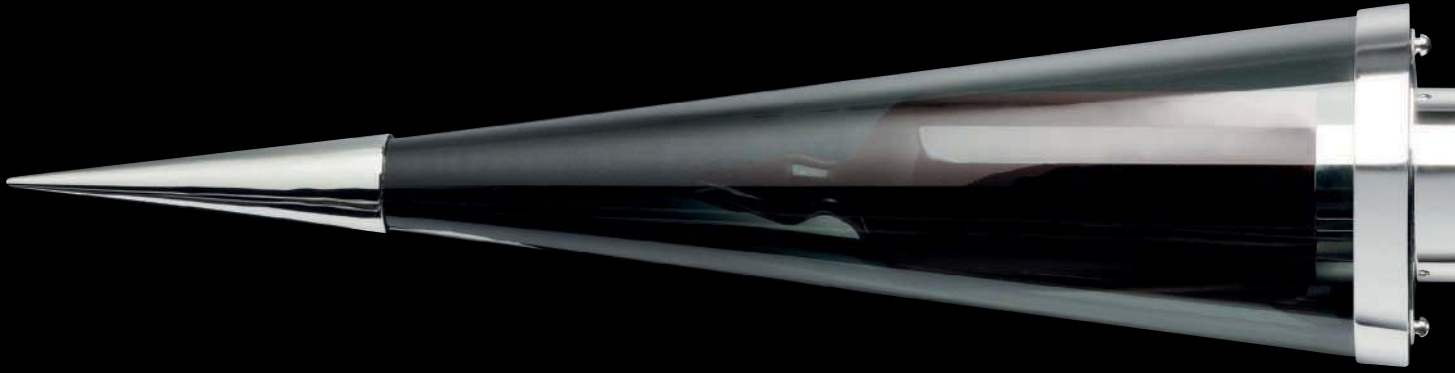
MIS EN BOUTEILLE AU CHATEAU



CHATEAU LAFITE - ROTHSCHILD

1945

APPELLATION PAUILLAC CONTRÔLÉE





*The ampoule project is typical of the pioneering philosophy behind Penfolds winemaking evolution. The collaboration with South Australia's finest artists has been a fitting tribute for one of South Australia's finest wines.*

—Peter Gago, Penfolds Chief Winemaker



**THE PENFOLDS AMPOULE**

Penfolds, Block 42, Kalimna Vineyard,  
Cabernet Sauvignon 2004

*South Australia*

*In original presentation case,  
limited to twelve editions*

ESTIMATE ON REQUEST



The Penfolds Ampoule contains one of the rarest and most prized Cabernet Sauvignon wine made from Block 42 from the legendary Kalimna Vineyard. This vineyard, first planted in 1888, is planted with some of the oldest Cabernet Sauvignon vines in world.

Four South Australian artists have been commissioned to collaborate on the Penfolds Ampoule: glass artist Nick Mount, glassblower Ray Leake, sculptor Hendrik Forster and furniture craftsman Andrew Bartlett.

As a testament to the artistry and excellence of The Penfolds Ampoule, a Penfolds senior winemaker will travel to the owner's destination of choice, where the ampoule will be ceremoniously removed from its glass plumb-bob casing and opened using a specially designed, tungsten-tipped, and sterling silver scribe-snap. The winemaker will then prepare the wine using a beautifully crafted sterling silver tastevin—the ultimate private tasting experience.

*For more information or to set up a private viewing, please contact the Wine Department.*

## **FINE AND RARE WINES**

*New York, Fall 2016*

### **VIEWING**

3–9 June 2016  
20 Rockefeller Plaza  
New York, NY 10020

### **CONTACT**

Richard Young  
ryoung@christies.com  
+1 212 636 2678

The Penfolds logo is written in a red, cursive script font. The word "Penfolds" is written in a flowing, elegant style, with the "P" being particularly large and decorative. A registered trademark symbol (®) is located at the end of the word.

# INTERNATIONAL WINE DEPARTMENT & AUCTION CALENDAR

## INTERNATIONAL HEAD OF DEPARTMENT

David Elswood  
Tel: +44 (0)20 7752 3366

## HEAD OF DEPARTMENT

### CHINA

Simon Tam  
Tel: +852 2978 6765

### LONDON

Chris Munro  
Tel: +44 (0)20 7752 3140

### CONTINENTAL EUROPE

Edwin Vos  
Tel: +31 (0)20 575 5208

### NORTH AMERICA

Per Holmberg  
Tel: +1 212 484 4841

## SENIOR CONSULTANTS

Michael Broadbent M.W.  
Anthony Hanson M.W.  
Tel: +44 (0)20 7752 3314

## WORLDWIDE

### AMSTERDAM

Edwin Vos  
Tel: +31 (0)20 575 5208

### BELGIUM

Fiona Morrison, M.W.  
Tel: +32 (0)55 31 17 59

### BORDEAUX

Bill Blatch  
Tel: +33 (0)777 965 565

### BEIJING

Austin Zhang  
Tel: +86 10 8572 7927

### GENEVA

Agathe de Saint Céran  
Tel: +41(0) 22 31 917 60

### HONG KONG

Simon Tam  
Tim Triptree  
Fai Lo  
Venus Ho  
Jennifer Lo  
Tiffany Po  
Tel: +852 2978 6761

### LONDON

Carolyn Holmes  
Peter Mansell  
Charles Foley  
Duncan McEuen  
(Consultant)  
Tel: +44 (0)20 3219 6097

### LOS ANGELES

Scott Torrence  
Tel: +1 310 385 2625

### NEW YORK

Per Holmberg  
Richard Young  
Noah May  
Layla Khabiri  
Scott Torrence  
Tel: +1 212 636 2270

### PARIS

Edwin Vos  
Agathe de Saint Céran  
Clément Huvet  
Tel: + 33(0) 1 40 76 83 88

## BUSINESS MANAGERS

### FRANCE

Sarah de Maistre  
Tel: +33 (0)1 40 76 83 56

### HONG KONG

Cindy Tse  
Tel: +852 2978 6759

### LONDON

Antonia Fitzgerald  
Tel: +44 (0)20 7752 3101

### NEW YORK

Devon Elovitz  
(Business Coordinator)  
Tel: +1 212 641 5776

10/05/16

## AUCTION CALENDAR 2016

To include your property in these sales please consign ten weeks before the sale date. Contact the specialists or representative office for further information.

**17 MAY**  
FINEST AND RAREST WINES  
GENEVA

**17-31 MAY**  
WINE ONLINE/LDN

**27 MAY**  
FINEST & RAREST WINES:  
DIRECT FROM GREAT ESTATES  
HONG KONG

**28 MAY**  
FINE AND RARE WINES  
HONG KONG

**30 MAY**  
30 YEARS: THE SALE  
HONG KONG

**9 JUNE**  
FINEST AND RAREST WINES  
LONDON, KING STREET

**10 JUNE**  
FINE WINES AND SPIRITS  
Featuring Rarities Direct from  
The Cellars of Champagne Henriot  
NEW YORK

**28 JUNE-12JULY**  
WINE ONLINE/NYC  
ALL AMERICAN SALE

**26 JULY-9 AUGUST**  
WINE ONLINE/LDN

**25 AUGUST - 8 SEPTEMBER**  
WINE ONLINE/HGK  
MID-AUTUMN FESTIVAL

**3 SEPTEMBER**  
FINE AND RARE WINES  
HONG KONG

**8 SEPTEMBER**  
FINE AND RARE WINES  
LONDON, KING STREET

**15-29 SEPTEMBER**  
WINE ONLINE/NYC

**20 OCTOBER**  
FINE AND RARE WINES  
LONDON, KING STREET

**21 OCTOBER**  
FINE AND RARE WINES  
NEW YORK

**1-15 NOVEMBER**  
WINE ONLINE/NYC

**13 NOVEMBER**  
FINEST AND RAREST WINES  
GENEVA

**25 NOVEMBER**  
FINE AND RARE WINES  
HONG KONG

**26 NOVEMBER**  
FINE AND RARE WINES  
HONG KONG

**29 NOVEMBER - 13 DECEMBER**  
WINE ONLINE/LDN

**8 DECEMBER**  
FINEST AND RAREST WINES  
LONDON, KING STREET

**9 DECEMBER**  
FINE AND RARE WINES  
NEW YORK

Subject to change.

20/04/16

# FINE WINES AND SPIRITS

FEATURING RARITIES DIRECT FROM  
THE CELLARS OF CHAMPAGNE HENRIOT

**FRIDAY 10 JUNE 2016**



Per Holmberg



Scott Torrence



Richard Young



Noah May



Edwin Vos



Layla Khabiri



Devon Elovitz

## SPECIALISTS

Per Holmberg  
pholmberg@christies.com  
Scott Torrence  
storrence@christies.com  
Richard Young  
ryoung@christies.com  
Noah May  
nmay@christies.com  
Edwin Vos  
evos@christies.com  
Layla Khabiri  
lkhabiri@christies.com  
Tel: +1 212 636 2270  
Fax: +1 212 636 4954

## BUSINESS COORDINATOR

Devon Elovitz  
delovitz@christies.com

## AUCTION

Friday 10 June 2016  
at 10.00 am (Lots 1-495)

20 Rockefeller Plaza  
New York, NY 10020

## VIEWING

Friday	3 June	12.00 pm - 6.00 pm
Saturday	4 June	10.00 am - 6.00 pm
Sunday	5 June	1.00 pm - 5.00 pm
Monday	6 June	10.00 am - 6.00 pm
Tuesday	7 June	10.00 am - 8.00 pm
Wednesday	8 June	10.00 am - 5.00 pm
Thursday	9 June	10.00 am - 6.00 pm

## AUCTION CODE AND NUMBER

In sending absentee bids or making enquiries, this sale should be referred to as **LARKIN-12268**

## AUCTIONEERS

Andrew McVinish (# 1379272)  
Robbie Gordy (# 2033717)  
Richard Nelson (# 1184056)

## SERVICES

### GENERAL INFO

Tel: +1 212 636 2000  
Fax: +1 212 636 2399

### ABSENTEE AND TELEPHONE BIDS

Tel: +1 212 636 2437  
Fax: +1 212 636 4938

### CLIENT SERVICES

+1 212 636 2437

### AUCTION RESULTS

christies.com

### POST-SALE SERVICES

Payment, Shipping and Collection  
Tel: +1 212 636 2650  
Fax: +1 212 636 4939  
Email: PostSaleUS@christies.com

Christie's Inc. licensed by the New York City Department of Consumer Affairs. Auction House License #1213717

Columbus Circle Wines and Spirits licensed by the New York State Liquor Authority. Wine/Liquor Auction Permit #218803, License #1192500

Retail Liquor Store License Cert. #G817868, Serial #1192500

Champagne generously provided by:

CHAMPAGNE  
**HENRIOT**  
MAISON FONDÉE EN 1808

## CONDITIONS OF SALE

This auction is subject to Important Notices, Conditions of Sale and to Reserves

## BUYING AT CHRISTIE'S

For an overview of the process, see the Buying at Christie's section.

[25]

These auctions feature

**CHRISTIE'S LIVE**

Bid live in Christie's salerooms worldwide  
register at [www.christies.com](http://www.christies.com)



Browse this auction and view real-time results on your iPhone and iPod Touch

View catalogues and leave bids online at [christies.com](http://christies.com)

# FINE WINES AND SPIRITS

10 JUNE 2016

## What is Luxury?

Luxury is often described as the ultimate state of comfort or extravagance. In this sale, we explore the meaning of luxury for different collectors: Is it the idea of owning and tasting history? Is it purely the idea of consuming a rare bottle? Or is it the convenience of the decades of curation all offered in mere hours?

This week in June, Christie's New York celebrates Luxury Week. After a round of successful sales in 20th Century Art, we go back to the very essence of collecting—a curated sequence of sales that look to showcase the many components of luxury.

## Finest and Rarest

Christie's specialists dedicate their lifelong careers to the pursuit for the finest and rarest objects. So it comes as no surprise that the exceptional lots on offer in our recent April sale garnered vibrant interest and competitive bidding from all over the world. We achieved several world records, including one for a pristine case of La Tâche 1978. This current sale is no exception to Christie's standard for excellence and record-breaking prices.

Whether it's miniscule production, exceedingly particular winemaking standards, or the world's demand for these bottles, the wines in this sale possess all the requisite hallmarks of rarity. This includes First Growths, Pétrus, Domaine de la Romanée-Conti, Henri Jayer's Cros Parantoux, Screaming Eagle and more, all in one place, for the ease of the most demanding collector.

## Mature Wine

Wine is unique from other art forms in that it is a living, breathing entity that begins to change from the moment the grapes are picked to when the last drop is consumed. It is this very elusive component of wine, its ever-changing, ephemeral nature that makes it uniquely captivating to collectors. It affords the winemaker, the ability to stopper history, and the drinker, the ability to taste it. With that in mind, a wine's vintage, is of the utmost importance. And, luckily, this sale offers a plethora of coveted vintages that are sure to please everyone.

## On Collecting and Storage

The importance of storage has been the most important criterion for curation here at Christie's. When including a great example of wine, we look for the properly cellared wines showing representative bottle age for the vintage, not dissimilar from our art colleagues in the search for the best or most representative work by an artist.

## Looking Ahead

At Christie's wine department, we have always been at the forefront of auction sales—from offering spirits for the first time in New York back in 2007 to leading the Madeira renaissance here in America three years ago. This fall, we are excited to offer, The Penfolds Ampoule—the most important lot to be offered in recent years and the very first time it will be offered for sale in auction. The Penfolds Ampoule is the true intersection of art and wine—a masterpiece in both winemaking and glass artistry. For more information or to set up a private viewing, please contact the wine department.



## FEATURED COLLECTIONS

All collections recently removed from temperature-controlled storage

### LOTS

1-5

#### **Pétrus, Pétrus, Pétrus**

We start the sale with the finest Pomerol estate, Pétrus. On offer are pristine cases of Pétrus 1988 and 2003, for the most discerning collector. All lots were purchased on release and stored meticulously in a custom-built wine cellar until removal for auction.

13-130

#### **A Magnificent Private Collection**

This collection has been carefully assembled over several decades, starting in the mid-1980s. The collector enlisted the advice of a leading, New York-based consultant and writer, Judy Beardsall, who bought judiciously from the American and UK wine trade and directly from brokers and merchants in Continental Europe. Christie's has been entrusted with selling large tranches of the collection over the years, and this offering marks one of the last release of rarities from the collection. Please see page 9 to learn more.

119 - 142

#### **Exceptional Spirits**

The focus of many collectors' attention is on whisky and once again, we offer a stellar selection of bottles that have varied appeal. Highlights include bottles of Glenfiddich 40 Year Old, Brora 30 Year Old, a pair of old Glen Grants from 1948 and 1950, a rare collection of Glenmorangie bottles from the 1970s and the stunning quartet of bottles which form Highland Park's Valhalla Collection – whiskies that express the depth and multi-faceted complexity of Highland Park's inimitable style. This selection of legendary whiskies are joined by rare old Armagnac and iconic Cognac in the form of Courvoisier's Erté Collection. We're particularly thrilled to be offering a large selection of rare, privately-bottled Laubade Armagnac. These Armagnacs are offered in case quantity.

143-161

#### **Hidden Gems**

This is a small but stellar collection that was obviously sourced with a fine eye for quality. Of particular note are the rare lots of Burgundy sourced by this collector, including Henri Jayer's unparalleled Cros Parantoux bottling and Romanée-Conti and Montrachet from Domaine de la Romanée-Conti. Exceptional claret comes in the form of Pétrus 1982, Le Pin 1990 and there's even some mature Cristal for champagne lovers.

162-194

#### **For the Love of White Burgundy**

Admirers of white Burgundy, look no further. This collection not only represents the best vineyards—Bâtard, Chevalier and Le Montrachet—but also the most highly regarded producers, including Domaine Leflaive, Ramonet, and Coche-Dury. Perfect wines to enjoy over the coming summer months.

242-245

#### **Rarities Direct from the Cellars of Champagne Henriot with Proceeds Intended to Benefit University Settlement**

As one of the New York Wine department's favorite Champagne houses, we are thrilled to offer a unique selection of wines direct from their cellars. One of the highlights on offer is a chance to acquire one of the first three magnum of the very rare CUVE 38 Blanc de Blancs released this year. The winner of the lot will enjoy a private tour of the Henriot winery and cellars including an exclusive tasting with Laurent Fresnet, Henriot's Chef de Cave. The experience will conclude with lunch for up to four people at Les Aulnois. Other highlights include Cuvée des Enchanteleurs 1964 and rare Jeroboams of Brut Millésime—all for a good cause, of course.

246-307

#### **Property of a Midwestern Gentleman**

Another selection from a very good friend of Christie's is a Bordeaux-focused collection from all the top Châteaux with some Champagne, Burgundy, and Rhône. Highlights include a full case of Trotaoy 1998, bottles of Chave Hermitage 1990, and even Shafer Hillside Select 2002, for the California drinker.

321-336

#### **A Focused Selection of Rarities from a Californian Cellar: Part Deux**

The first portion of this collection was offered in our most recent sale with outstanding results—a twelve bottle case of La Tâche 1978 achieved an outstanding \$91,875. The second tranche of this focused collection combines the very best producers with the very best years. This is another opportunity to acquire wines with the. Highlights from this offering include DRC Richebourg 1985 and 1990, Margaux 1986, and La Mission Haut Brion 1982.

337-362

#### **Domaine de la Romanée-Conti**

Here's a rare opportunity to acquire wines from Domaine de la Romanée-Conti's La Tâche, Echézeaux, Grands-Echézeaux, and Romanée St-Vivant vineyards. The vintages represented range from 1967 to 2004.

382-416

#### **Classic Claret**

A Claret collector's selection includes many coveted Châteaux from the very best vintages, all stored in a pristine custom-built cellar kept at 53°F with two cooling units and a backup generator. This collector has been extremely detailed and meticulous about how his wines are stored and the conditions prove it. A focus in this collection is the outstanding 2000 Bordeaux vintage from highly regarded Châteaux, including Le Pin, Mouton, Margaux, La Mission Haut-Brion. Other highlights include mature legendary vintages like Latour 1949 and 1961, Haut Brion 1961, and even cases of Screaming Eagle, for the California collector.

421

#### **A Rare Vertical of Pétrus**

On offer is a rare vertical of the legendary Pomerol Château, Pétrus. Offered in a 27-bottle lot from 1964 to 2010, this is a very rare opportunity to acquire an instant collection that will be the envy of many.

**PETRUS TO START****Pétrus 1988***Pomerol, cru exceptionnel**Levels: into neck; four lightly stained labels*1 12 bottles *per lot* \$14,000-18,000**Pétrus 2003***Pomerol, cru exceptionnel**Both lots in original wooden cases, banded prior to Specialist inspection**Parcel: lots 2-3*2 12 bottles *per lot* \$18,000-24,000

3 12 ,,

**Château Léoville-Las-Cases 1989***Saint-Julien, 2ème cru classé**Levels: four bottom neck, two top shoulder*4 6 bottles *per lot* \$750-1,000**Château Pichon-Longueville, Lalande 1986***Pauillac, 2ème cru classé**Levels: four bottom neck, two top shoulder*5 6 bottles *per lot* \$900-1,200**MOUTON**

In 1853 Baron Nathaniel de Rothschild bought Château Brane-Mouton and renamed it Mouton-Rothschild. In 1945 to celebrate the 'Année de la Victoire' Baron Philippe de Rothschild commissioned the artist Philippe Juillan to design the label which began the tradition of a different artist designing the label for each vintage that continues to this day (except for 1953 and 1977). Such famous names as Picasso, Kandinsky, Francis Bacon and Andy Warhol have featured and helped to strengthen the reputation of the Château. Artists have never been paid for their work instead being rewarded with bottles of Mouton-Rothschild. Château Mouton-Rothschild was elevated to First-Growth status in 1973.

**Château Mouton-Rothschild 1982***Pauillac, 1er cru classé**Lot 6 levels: six bottom neck, six top shoulder; lightly bin soiled and stained labels, two heavily stained labels, slip labels overlapping at front**Lot 7 levels: five bottom neck, three top shoulder, one upper shoulder; four torn capsules, heavily bin soiled and damp stained labels, slip labels overlapping at front**Lot 8 levels: four bottom neck, two top shoulder; lightly bin soiled and damp stained labels, slip labels overlapping at front*6 12 bottles *per lot* \$9,000-12,0007 9 ,, *per lot* \$6,500-9,0008 6 ,, *per lot* \$4,500-6,000**Château Calon-Ségur 1982***Saint-Estéphe, 3ème cru classé**Levels: top shoulder; lightly corroded capsules, two lightly stained labels, lightly bin soiled labels*9 6 bottles *per lot* \$1,000-1,500**Château Calon-Ségur 1982***Levels: two top shoulder, one upper shoulder; lightly corroded capsules, lightly bin soiled labels, two stained labels* (3)**Château Léoville-Barton 1982***Levels: five bottom neck, two top shoulder; one nicked capsule, lightly bin soiled labels* (7)10 10 bottles *per lot* \$1,400-2,000**Château Cos d'Estournel 1982***Saint-Estéphe, 2ème cru classé**Lot 11 levels: into neck; scuffed capsules, bin soiled and damp stained labels**Lot 12 levels: eight bottom neck, three top shoulder; scuffed capsules, bin soiled and damp stained labels*11 12 bottles *per lot* \$2,800-3,50012 11 ,, *per lot* \$2,600-3,500

# A MAGNIFICENT PRIVATE COLLECTION

The collection that follows has been carefully assembled over several decades, starting in the mid-1980s. The collector enlisted the advice of a leading, New York-based consultant and writer, Judy Beardsall, who bought judiciously from the American and UK wine trade and directly from brokers and merchants in Continental Europe. Christie's have been entrusted with selling large tranches of the collection over the years, and this offering marks one of the last releases of rarities from the collection.

The collection includes many superb examples of classic Bordeaux from the mid-20th century—stellar vintages of the greatest châteaux. The buyer had close relationships with several UK-based wine brokers who sold wine that came directly from the cellars of the French merchant, Nicolas, in the late 1980s—several of these rare bottles feature here. Highlights include two magnums of Château Lafite-Rothschild 1959, bottles of Château Latour 1959 and magnums of La Mission-Haut-Brion 1966, which were bought between 1988 and 1991. Alongside these Nicolas bottles are Château La Mission-Haut-Brion from the legendary 1961 and 1955 vintages and Château Latour and Lafite-Rothschild from 1945.

Moving from the mid-20th century into more recent years of note in Bordeaux, the collection includes stellar wines from Châteaux Margaux and Palmer from the two iconic vintages of the early 1980s for this commune - 1982 and 1983. There are also older, classic vintages of Palmer including 1966 and 1970. If the wines of Margaux were the focus of this collector's Left Bank affections, then Pomerol was where their Right bank tastes centered—Pétrus, L'Église-Clinet and Latour à Pomerol all feature from various vintages.

Bordeaux is without doubt the focus of the collection, but outside of France, Tuscany and in particular one of Tuscany's greatest single varietal wines—Masseto plays an important role in giving this collection shape. Masseto is singular in its appeal and the vintages included here, 1995 and 1996 are two of the finest ever bottled.

Finally and of particular note is a focused collection of ancient Madeira covering three centuries. The oldest bottle in the collection—Barbeito Terrantez 1795 is legendary and rarely seen at auction, or indeed anywhere. The collection also includes Oscar Acciaiolý 1802 and Boal Quinta do Serrado 1827—historic bottles of great importance.

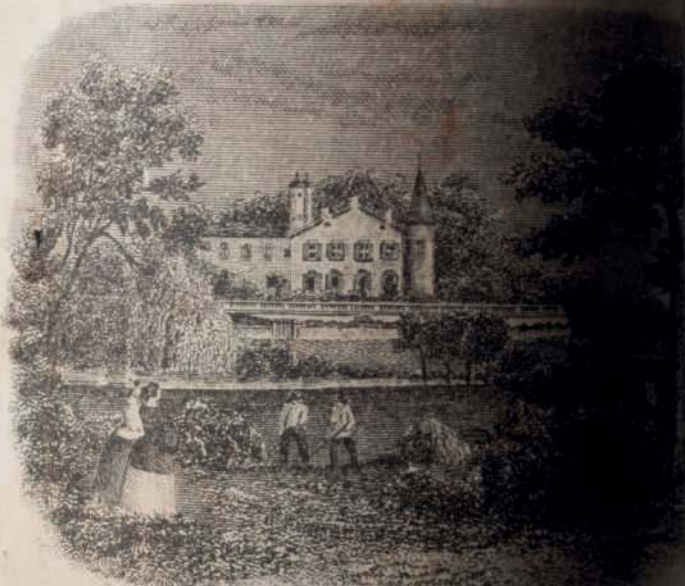
We are delighted to offer this spectacular collection—all recently removed from professional storage for this sale. Please contact the Wine Department with any enquiries about specific lots, or for an appointment to view wines from the collection.

LAFITE

RUSE  
FRÈRES  
BORDEAUX  
FRANCE

1945

MIS EN BOUTEILLE AU CHATEAU



CHATEAU LAFITE - ROTHSCHILD  
1945

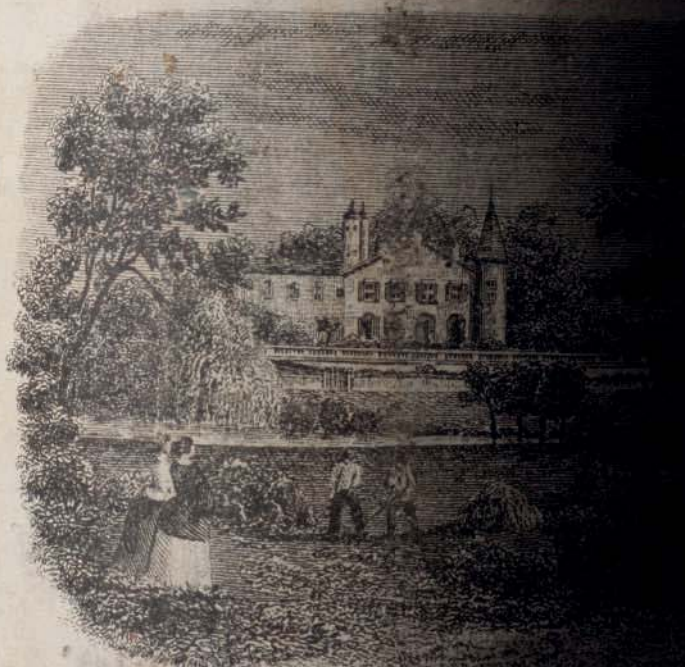
APPELLATION PAUILLAC CONTRÔLÉE

DEPOSÉ

RUSE  
FRÈRES  
BORDEAUX  
FRANCE

1945

MIS EN BOUTEILLE AU CHATEAU



CHATEAU LAFITE - ROTHSCHILD  
1945

APPELLATION PAUILLAC CONTRÔLÉE

DEPOSÉ

**Château Lafite-Rothschild 1945***Pauillac, 1er cru classé**Levels: three upper shoulder, five mid shoulder; scuffed capsules, two torn with cork exposed, one corroded capsule, Château and vintage branded corks, bin soiled labels, three torn labels*

13 8 bottles per lot \$12,000-20,000

**Château Lafite-Rothschild 1959***Pauillac, 1er cru classé**Lot 14 levels: bottom neck; one cut capsule revealing Château and vintage branded cork, one lightly bin soiled label, Etablissements Nicolas stamp labels, believed late release**Lot 15 level: bottom neck; scuffed capsule, reconditioned at the Château in 1984, bin soiled and stained label*

14 2 magnums per lot \$6,000-8,000

15 1 bottle per lot \$1,500-2,000

**Château Lafite-Rothschild 1975***Pauillac, 1er cru classé**Lot 16 levels: ten bottom neck, one top shoulder, one upper shoulder; scuffed and wrinkled capsules, one torn capsule, lightly bin soiled labels, four stained labels, one heavily stained labels, one torn label, one missing label, vintage identified on cork**Lot 17 levels: bottom neck; scuffed capsules, one torn capsule, removed to reveal Château and vintage branded cork, one missing label, one lightly bin soiled label*

16 12 bottles per lot \$3,000-4,000

17 2 ,, per lot \$600-800

**Château Lafite-Rothschild 1982***Pauillac, 1er cru classé**Levels: six upper shoulder, four mid shoulder; lightly corroded capsules, lightly bin soiled labels, two tissue stained labels*

18 10 bottles per lot \$10,000-18,000

**Château Lafite-Rothschild 1989***Pauillac, 1er cru classé**Levels: into neck; three lightly scuffed capsules**In original wooden case*

19 12 bottles per lot \$5,000-6,000

**LATOUR****Château Latour 1945***Pauillac, 1er cru classé**Levels: mid shoulder; one heavily corroded capsule, torn at top to expose slightly raised cork, Château and vintage embossed metal capsules, bin soiled and stained labels, one nicked label*

20 2 bottles per lot \$2,800-4,500

**Château Latour 1955***Pauillac, 1er cru classé**Levels: two upper shoulder, one upper mid shoulder, one mid shoulder; one corroded capsule, one heavily corroded capsule, embossed Château and vintage branded capsules, Château branded corks, heavily bin soiled labels*

21 4 bottles per lot \$2,800-4,000

**Château Latour 1959***Pauillac, 1er cru classé**Levels: seven into neck, one top shoulder; reconditioned in 1988, Château and vintage embossed metal capsules, one slightly wrinkled and loose capsule, one capsule removed to reveal Château and vintage branded "Rebouché en 1988" cork, lightly bin soiled labels, Etablissements Nicolas stamps, slip labels overlapping at front*

22 8 bottles per lot \$12,000-16,000

**Château Latour 1966***Pauillac, 1er cru classé**Level: one bottom neck, three upper shoulder; scuffed capsules, one lightly torn capsule, lightly bin soiled and torn labels, one with selection Nicolas stamp*

23 4 bottles per lot \$1,600-2,000

**Château Latour 1970***Pauillac, 1er cru classé**Levels: three top shoulder, two upper mid shoulder; lightly oxidized capsules, one nicked capsule, bin soiled and lightly glue striped labels*

24 5 bottles per lot \$1,200-1,800

**Château Latour 1975***Pauillac, 1er cru classé**Levels: five top shoulder, four upper shoulder; lightly oxidized capsules, one torn capsule, two lightly nicked capsules, bin soiled labels*

25 9 bottles per lot \$2,600-3,500

**Château Latour 1995***Pauillac, 1er cru classé**Lot 26 levels: into neck; two lightly scuffed labels, one nicked label, lightly bin soiled labels**In original wooden case**Lot 27 levels: bottom neck; scuffed capsules, lightly scuffed and bin soiled labels, one creased capsule*

26 12 bottles per lot \$4,000-6,000

27 12 ,,

**Les Forts de Latour 1982***Pauillac**Levels: two into neck, seven bottom neck; one lightly oxidized capsule, lightly bin soiled and torn labels*

28 9 bottles per lot \$1,800-2,400

## MARGAUX

Margaux is unique among the communes of the Médoc: it is the farthest south (isolated from its three famous cousins to the north, St.-Estèphe, St.-Julien and Pauillac) and is made up of several non-contiguous parcels of vineyard land. The appellation of Margaux encompasses the village of Margaux, of course, as well as the villages of Cantenac, Soussans, Labarde, and Arsac. Ideally, the limestone, chalk, clay and sand of Margaux combine (especially where gravel dominates, facilitating drainage) to make a fragrant and silky wine. More Margaux properties were included in the famous classification of 1855 than any other commune.

### Château Margaux 1928

*Margaux, 1er cru classé*

*Levels: two upper shoulder, one mid low shoulder; short Château embossed capsules with Château and vintage branding visible on corks, two lightly corroded capsules, one lightly torn at top, one heavily bin soiled label, one with Etablissement Nicolas stamp in bottom right hand corner, two bin soiled, two heavily wine stained, torn and stained labels with Château and vintage details illegible*

29 3 bottles per lot \$3,000-4,500

### Château Margaux 1982

*Margaux, 1er cru classé*

*Lots 30-31 levels: six bottom neck, five top shoulder, one upper shoulder; lightly oxidized capsules, lightly bin soiled labels, two scuffed capsules*

*Lots 30-31 in original wooden cases with damaged lids*

*Lot 32: levels bottom neck; lightly scuffed capsules, lightly bin soiled labels*

*Parcel: lots 30-31*

30 12 bottles per lot \$6,000-8,000

31 12 „

32 3 „ per lot \$1,500-2,000

## MOUTON

### Château Mouton-Rothschild 1948

*Pauillac, 1er cru classé*

*Level: bottom neck; scuffed and nicked capsule removed to reveal Château and vintage branded cork, remains of bins soiled label only protected by plastic coating, Etablissements Nicolas on label*

33 1 magnum per lot \$2,000-2,600

### Château Mouton-Rothschild 1970

*Pauillac, 1er cru classé*

*Lot 34 levels: two top shoulder, eight upper shoulder, two mid upper shoulder; lightly oxidized capsules, eight lightly torn capsules, lightly bin soiled labels, in original wooden case*

*Lot 35 levels: two top shoulder, five upper shoulder, three mid shoulder; six lightly torn capsules, one torn at top, one lightly corroded capsule, lightly bin soiled and glue striped labels*

*Lot 36 levels: two top shoulder, one upper shoulder, five mid shoulder; oxidized capsules, one corroded at top, bin soiled and glue striped labels*

34 12 bottles per lot \$1,400-1,800

35 10 „ per lot \$1,000-1,600

36 8 „ per lot \$800-1,200

### Château Mouton-Rothschild 1982

*Pauillac, 1er cru classé*

*Levels: one bottom neck, four top shoulder; scuffed capsules, one torn label, one heavily torn label, bin soiled labels, two damp stained labels*

37 5 bottles per lot \$3,500-4,500

### Château Mouton-Rothschild 1985

*Pauillac, 1er cru classé*

*Lot 38 levels: six bottom neck, six top shoulder; one lightly torn capsule, one nicked label, in original wooden case*

*Lot 39 levels: three bottom neck, five top shoulder, four upper shoulder; lightly bin soiled labels, one torn capsule*

*Lot 40 levels: two top shoulder, three upper shoulder, one mid shoulder; one heavily corroded capsule, cork exposed at top, one lightly corroded capsule, lightly bin soiled labels, one nicked label*

38 12 bottles per lot \$3,000-4,000

39 12 „

40 6 „ per lot \$1,500-2,000

### Château Mouton-Rothschild 1986

*Pauillac, 1er cru classé*

*Levels: six top shoulder, six upper shoulder; six crowned capsules with cork exposed at top, slight signs of old seepage, lightly bin soiled labels*

*In original wooden case*

41 12 bottles per lot \$7,000-10,000



## HAUT-BRION

### Château Haut-Brion 1959

Pessac (Graves), 1er cru classé

Levels: one 4.5cm, one 6cm; one lightly corroded capsule, one slightly depressed cork, one bin soiled label, one lightly bin soiled label, one faded and nicked label

42 2 bottles per lot \$2,000-3,000

### Château Haut-Brion 1982

Pessac (Graves), 1er cru classé

Levels: five 3cm, one 5cm; two lightly corroded capsules, lightly bin soiled labels

43 6 bottles per lot \$3,000-4,000

## LA MISSION HAUT-BRION

### Château La Mission-Haut-Brion 1955

Pessac (Graves), cru classé

Levels: two upper shoulder, two mid upper shoulder; scuffed capsules, three bin soiled and stained labels, one lightly bin soiled label, one lightly nicked label

44 4 bottles per lot \$4,000-6,000

### Château La Mission-Haut-Brion 1961

Pessac (Graves), cru classé

Levels: three top shoulder, one upper shoulder; scuffed capsules, one very lightly corroded capsule, bin soiled and lightly torn labels

45 4 bottles per lot \$7,500-9,500

### Château La Mission-Haut-Brion 1966

Pessac (Graves), cru classé

Levels: bottom neck; scuffed and nicked labels, one slightly torn at top, Château and vintage branded cork, lightly bin soiled labels with Etablissements Nicolas stamps, slip labels slightly overlapping at front, believed late release

46 3 magnums per lot \$2,400-3,000

### Château Cos d'Estournel 1982

Saint-Estéphe, 2ème cru classé

Levels: bottom neck; three lightly torn capsules, lightly bin soiled labels

47 6 bottles per lot \$1,400-1,800

## LYNCH-BAGES

### Château Lynch-Bages 1970

Pauillac, 5ème cru classé

Levels: thirteen upper shoulder, one mid shoulder; two lightly corroded capsules, six bin soiled and stained labels, eight lightly bin soiled labels, three torn labels

48 14 bottles per lot \$900-1,200

### Château Lynch-Bages

Pauillac, 5ème cru classé

#### 1982

Levels: five top shoulder, one mid upper shoulder; scuffed and lightly bin soiled labels, one stained label, mixed importers (6)

#### 1989

Levels: into neck; lightly bin soiled labels (2)

49 8 bottles per lot \$1,800-2,400

### Château Lynch-Bages 1982

Pauillac, 5ème cru classé

Levels: one top shoulder, three upper shoulder; scuffed capsules, one nicked label, one with slight signs of old seepage, lightly bin soiled labels, scuffed labels

50 4 bottles per lot \$1,000-1,200

### Château Lynch-Bages 1985

Pauillac, 5ème cru classé

Lot 51 levels: six bottom neck, six top shoulder; scuffed capsules, two lightly torn capsules, one with signs of old seepage, three with slight signs of old seepage, lightly scuffed and bin soiled labels

Lot 52 levels: three bottom neck, two top shoulder; one torn capsule, with slight signs of old seepage, lightly bin soiled labels, one nicked label

51 12 bottles per lot \$1,500-2,000

52 5 ,, per lot \$750-1,000



Perhaps the most suave and understated of all the great, timeless clarets. La Mission '61 is a perfect reconciliation of power and nuance. That Graves character of earthy, ferrous depth runs through this wondrous wine.  
—Noah May, Specialist

### Château Lynch-Bages 1989

Pauillac, 5ème cru classé

Lots 53-54 levels: into neck; lightly scuffed capsules, very lightly scuffed labels, lightly bin soiled labels

Lots 53-54 in original wooden cases with damaged lids

Lot 55 levels: into neck; scuffed capsules, lightly bin soiled labels, in original wooden case

Parcel: lots 53-54

53 12 bottles per lot \$2,800-3,500

54 12 ,,

### Château Lynch-Bages 1989

Pauillac, 5ème cru classé

Levels: into neck; scuffed capsules, lightly bin soiled labels

In original wooden case

55 12 bottles per lot \$2,800-3,500





**EXCEPTIONAL PALMER 1966****Château Palmer 1966***Cantenac (Margaux), 3ème cru classé**Levels: two top shoulder, seven upper shoulder, three mid upper shoulder; three corroded capsules, one lightly corroded capsule, two slightly depressed corks, scuffed capsules, bin soiled labels*

56 12 bottles per lot \$1,800-2,400

**PALMER 1970****Château Palmer 1970***Cantenac (Margaux), 3ème cru classé**Lot 57 levels: three top shoulder, nine upper shoulder; oxidized and scuffed capsules, five nicked capsules, bin soiled labels, two partially detached labels**Lot 58 levels: six upper shoulder, five mid shoulder; scuffed capsules, three oxidized and nicked capsules, lightly bin soiled labels, two nicked labels, two stained labels, two bin soiled labels, one partially detached, mixed importers**Lot 59 levels: nine upper shoulder, one upper mid shoulder; scuffed capsules, one nicked capsule, two lightly oxidized capsules, bin soiled and faded labels, slip labels overlapping at front**Lot 60 levels: one top shoulder, six upper shoulder, two mid shoulder; scuffed and lightly oxidized capsules, one corroded capsule, one capsule torn at top, lightly bin soiled labels**Lot 61 levels: two top shoulder, two upper shoulder, two mid shoulder; lightly oxidized and torn capsules, one lightly corroded capsule at top, bin soiled labels, one partially detached*

57 12 bottles per lot \$1,500-2,000

58 11 ,, per lot \$1,400-1,800

59 10 ,, per lot \$1,200-1,600

60 9 ,, per lot \$1,100-1,500

61 6 ,, per lot \$700-900

**Château Palmer***Cantenac (Margaux), 3ème cru classé***1966***Level: mid shoulder; lightly bin soiled label (1)***1970***Level: top shoulder; slight signs of old seepage, lightly bin soiled label (1)***1983***Levels: one into neck, one top shoulder; lightly bin soiled labels, overlapping strip labels (2)*

62 4 bottles per lot \$700-1,000

**Château Palmer 1983***Cantenac (Margaux), 3ème cru classé**Lot 63 levels: eleven bottom neck, one top shoulder; lightly scuffed capsules, three nicked capsules, lightly bin soiled labels**Lot 64 levels: nine bottom neck, three top shoulder; scuffed and lightly oxidized capsules, three lightly corroded capsules, lightly bin soiled labels**Lot 65 levels: eight bottom neck, three top shoulder, one mid shoulder; lightly oxidized capsules, two torn capsules, lightly bin soiled labels, one nicked label**Lots 63-65 in original wooden case*

63 12 bottles per lot \$3,500-4,500

64 12 ,,

65 12 ,,

**CHEVAL-BLANC****Château Cheval-Blanc 1948***Saint-Emilion, 1er grand cru classé (A)**Levels: four bottom neck, two top shoulder; shipped by**Eschenaueur and Co. Danish, bottled by K Dorph-Petersens**Vinlager, Danish import strips on capsule, bin soiled labels, one partially detached*

66 6 bottles per lot \$3,800-4,800

**Château Cheval-Blanc 1986***Saint-Emilion, 1er grand cru classé (A)**Levels: two bottom neck, five top shoulder; scuffed capsules*

67 7 bottles per lot \$2,000-2,800

**PETRUS****Pétrus 1970***Pomerol, cru exceptionnel**Levels: one top shoulder, one upper shoulder, two mid shoulder; two heavily corroded capsules with depressed corks, two scuffed capsules, one lightly corroded capsule, one slightly depressed cork*68 4 bottles *per lot \$3,500-5,500***Pétrus 1978***Pomerol, cru exceptionnel**Level: upper shoulder; badly torn capsule, slightly shrunken cork, exposed at top, lightly bin soiled and stained label*69 1 bottle *per lot \$800-1,200***Pétrus 1981***Pomerol, cru exceptionnel**Levels: top shoulder; scuffed capsules, one nicked capsule, lightly bin soiled labels*70 2 bottles *per lot \$1,400-1,800***Pétrus 1993***Pomerol, cru exceptionnel**Level: into neck; small stain on label*71 1 bottle *per lot \$1,000-1,500***LATOIR A POMEROL****Château Latour à Pomerol 1982***Pomerol**Levels: five bottom neck, two top shoulder, one upper shoulder; scuffed capsules, one lightly corroded capsule, lightly bin soiled labels*72 8 bottles *per lot \$1,200-1,800***L'ÉGLISE-CLINET**

A winery appropriately situated between Clinet and Clos l'Eglise, Château L'Eglise-Clinet currently ranks as one of Pomerol's best, most sought-after producers. Winemaker Denis Durantou, who has been running the 5.5 hectare plot since 1982, blends an assemblage of about 80% Merlot and 20% Cabernet Franc, which is then vinified in a combination of concrete and stainless steel vats, before being laid to rest in small new oak barriques for 18 months.

**Château L'Eglise-Clinet 1985***Pomerol**Lot 73-75 levels: eight bottom neck, four top shoulder; scuffed capsules, bin soiled and glue striped labels, slip labels overlapping at front**Lot 76 levels: four bottom neck, one top shoulder; one torn label, slip labels overlapping at front**Parcel: lots 73-75*73 12 bottles *per lot \$2,400-3,200*

74 12 ,,

75 12 ,,

76 5 ,, *per lot \$1,000-1,300***Château L'Eglise-Clinet 1994***Pomerol**Lots 77-79 levels: bottom neck; lightly scuffed capsules, one wrinkled label**Lot 80 levels: into neck; lightly bin soiled labels**Lots 77-79 in original wooden cases**Parcel: lots 77-79*77 12 bottles *per lot \$600-800*

78 12 ,,

79 12 ,,

80 6 ,, *per lot \$300-400***Château La Conseillante 1999** (2)**Château Smith Haut Lafitte Blanc 1995** (2)**Château L'Eglise-Clinet 1994** (2)*Level: into neck; bin soiled label***Château La Lagune 1989** (4)*Levels: three bottom neck, one top shoulder; one nicked label***Château Pichon-Lalande 1985** (1)*Level: into neck; lightly bin soiled label***Château Pontet Canet 1995** (1)*Level: into neck; scuffed label*81 12 bottles *per lot \$650-850***YQUEM****Château d'Yquem 1983***Sauternes, 1er grand cru classé**Level: bottom neck; scuffed capsule, lightly bin soiled and scuffed label*82 1 imperial *per lot \$2,000-3,000***Château d'Yquem 1996***Sauternes, 1er grand cru classé*83 12 half bottles *per lot \$1,200-1,600*

**BAROLO****Borgogno, Barolo Riserva 1974***Piedmont**Levels: 3cm; lightly bin soiled labels*84 12 bottles *per lot \$600-800***SAMMARCO****Castello dei Rampolla, Sammarco 1985***Tuscany**Levels: bottom neck*85 12 bottles *per lot \$800-1,000***Castello dei Rampolla, Sammarco 1990***Tuscany**Lot 86 levels: bottom neck; three lightly scuffed labels**Lot 87 levels: bottom neck or better*86 15 bottles *per lot \$750-1,000*87 12 bottles *per lot \$600-800***MASSETO**

At the top of the Masseto Hill, at an elevation of about 120 meters above sea level, the soils consist of loose clays and sand with many pebbles, which bless the wine with a marked elegance. This is the area defined as "Masseto Alto." "Masseto Centrale" is the central part of the Masseto vineyard, which determines the soul and backbone of Masseto. With slopes of a 10% gradient, the high proportion of Pliocene clays defines the character of this terroir; providing power, concentration and tannic support, and therefore great character, structure and longevity. Finally, the lowermost rows grow on less clay-rich soils, giving the wine its breadth, softness, and generosity. This final area is called "Masseto Junior". Within each of these three zones there are smaller areas that ripen differently and therefore need to be harvested at different times. Such a complex mosaic will naturally reflect in the wine by displaying great complexity and revealing a multi-faceted dimension.

**Tenuta dell'Ornellaia, Masseto***Tuscany***1993***Levels: bottom neck; lightly bin soiled labels (4)***1994***Levels: five bottom neck, one top shoulder; lightly bin soiled labels, three nicked labels (6)*88 10 bottles *per lot \$2,600-3,400*

*Vintages like 1995 and 1996 offered here have had a chance to develop in the bottle for the past two decades and show the greatness of Merlot grown in the perfect terroir in Bolgheri. Buy in quantity.*

—Richard Young, Associate Specialist

**Tenuta dell'Ornellaia, Masseto 1995***Tuscany**Lots 89-93 levels: bottom neck or better; scuffed, nicked, and lightly bin soiled labels, mixed importers**Lot 94 levels: bottom neck; in original wooden case**Parcel: lots 89-93*89 12 bottles *per lot \$4,000-5,000*

90 12 "

91 12 "

92 12 "

93 12 "

94 6 " *per lot \$2,000-2,600***Tenuta dell'Ornellaia, Masseto 1996***Tuscany**Lots 95-96 levels: bottom neck, one lightly bin soiled label**Lots 95-96 in two six-bottle original wooden cases**Lot 97 levels: bottom neck; one torn capsule, one nicked capsule, two lightly stained labels, one nicked label**Parcel: lots 95-96*95 12 bottles *per lot \$4,500-5,500*

96 12 "

97 5 " *per lot \$1,800-2,400***Tenuta dell'Ornellaia, Masseto 2000***Tuscany*98 2 bottles *per lot \$600-800***CALIFORNIA****Chateau Montelena, Cabernet Sauvignon 1982***Napa Valley**Levels: six bottom neck, two top shoulder; five lightly nicked labels, one nicked label, lightly bin soiled labels*99 8 bottles *per lot \$500-750***RIOJA****Compania Vinicola del Norte, Impérial****Gran Reserva 1956***Rioja**Levels: bottom neck; one capsule cut to reveal branded cork, late release*100 5 bottles *per lot \$1,000-1,500*



MASSETO

MASSETO

MASSETO



1996

1996

Imbottigliato all'origine da s.p.a.  
**TENUTA DELL'ORNELLAIA**  
Bolgheri - Italia

ITALIA  
e n° ml

**TOSCANA**  
INDICAZIONE GEOGRAFICA TIPICA

13,5% vol

# ANCIENT MADEIRA



## MADEIRA

### Barbeito, Terrantez 1795

Madeira

Stenciled bottle

101 1 bottle per lot \$3,000-4,000

### Oscar Acciaiolio, Terrantez 1802

Madeira

Level: into neck; embossed wax capsule, stained and heavily bin soiled label, reworked by Vinhos Barbeito on July 22, 1999

102 1 bottle per lot \$1,500-2,000



*I have been fortunate, I have tasted this beguiling, historic wine on many occasions. The Boal 1827 never fails to enthrall. I once gave a sip to my all-but-teetotal grandmother, she sat in reverent silence...a first.*  
—Noah May, Specialist

### Quinta do Serrado, Boal 1827

Madeira

Lots 103-104: Remains of cracked wax capsules, handwritten "Boal 1827"

Parcel: lots 103-104

103 2 bottles per lot \$2,400-3,500

104 2 ,,

### Barbeito, Malvazia 1834

Madeira

Levels: into neck; one wax capsule, one damaged embossed wax capsule, stenciled bottles

105 2 bottles per lot \$1,200-1,800

### Barbeito, Boal Garrafeira Particular 1856

Madeira

Level: bottom neck; lightly oxidized embossed metal capsule

106 1 bottle per lot \$1,000-1,500

### d'Oliveiras, Malvazia 1862

Madeira

Level: into neck; embossed wax capsule, aged for over one hundred years, stenciled bottle

107 1 bottle per lot \$700-900

### Barbeito, Bual Reserva Velha 1863

Madeira

Embossed wax capsule, bottled in 2000 by Rare Wine Co.

108 1 bottle per lot \$800-1,000

### Blandy's, Terrantez 1870

Madeira

Stenciled bottle, wax capsule

109 1 bottle per lot \$800-1,000

### Barbeito, Rich Rare Malmsey 1870

Madeira

Level: bottom neck; wax capsule

110 1 bottle per lot \$800-1,000

### Barbeito, Malvazia 1875

Madeira

Two embossed wax capsules, one damaged, one cracked wax capsule, stenciled bottles

111 3 bottles per lot \$2,000-2,800

### d'Oliveiras, Terrantez Reserva 1880

Madeira

112 1 bottle per lot \$600-800

**Blandy's, Malmsey 1886**

Madeira

Level: bottom neck; damaged embossed wax capsule

113 1 bottle per lot \$600-800

**d'Oliveiras, Malvasia 1895**

Madeira

Level: into neck; new wax capsule, stenciled bottle

114 1 bottle per lot \$500-700

**Barbeito, Malvasia Reserva Velha**

1834 (1)

1875 (1)

Above: embossed wax capsules, bottled in 2000, a Rare Wine Co. selection

**Barbeito, Malvasia 1900**

Level: into neck; damaged embossed wax capsule, stenciled bottle

115 3 bottles per lot \$2,000-3,000

**Barbeito, Boal 1863**

Embossed wax capsule, stenciled bottle (1)

**Barbeito, Malvasia 1901**

Cracked wax cap, stenciled bottle (1)

116 2 bottles per lot \$1,200-1,800

**PORT**

**Taylor 1948**

Port

Level: top shoulder; remains of embossed wax capsule stating shipper and vintage, handwritten neck tag stating "Taylor 1948," missing label

117 1 bottle per lot \$500-700

**RARE MASSANDRA**

Massandra Livadia Palace, Pink Muscat 1895 (1)

Massandra Livadia Palace, Red Port 1891 (1)

Massandra Livadia Palace, White Muscat 1910 (1)

Above levels: bottom neck; damaged wax capsules, in "The Massandra Collection" presentation cases

118 3 bottles per lot \$1,400-2,000





# EXCEPTIONAL SPIRITS

Following the success of our sales of Exceptional Spirits in December 2015 and April this year, we are delighted to offer another selection of rare and exceptional spirits in this sale of Fine and Rare Wines and Spirits. Many collectors are, once again, focused on whisky and we are offering a stellar selection of bottles that have a varied appeal. Highlights include bottles of Glenfiddich 40 Year Old, Brora 30 Year Old, a pair of old Glen Grants from 1948 and 1950, a rare collection of Glenmorangie bottles from the 1970s and the stunning quartet of bottles which form Highland Park's Valhalla Collection – whiskies that express the depth and multi-faceted complexity of Highland Park's inimitable style. This selection of legendary whiskies is joined by rare old Armagnac and iconic Cognac in the form of Courvoisier's Erté Collection. We're particularly thrilled to be offering a large selection of rare, privately-bottled Château de Laubade Armagnac, offered in case quantity. This Armagnac is a special blend of two barrels, one of 1948, the other of 1956. It was created by the cellar master of Château Laubade in 2000 for a private wedding. As the Armagnac is a blend of two vintages, French law prohibited either vintage to be included on the bottle, so the Armagnac is simply labeled as Laubade Armagnac, Special Réserve. This is a totally unique, wonderful expression of one of the greatest Armagnac house's spirit.

Please note that lots containing spirits may be subject to local shipping restrictions. Please contact the wine department for more information.



## CHATEAU DE LAUBADE

The venerable Armagnac producer Château de Laubade has held 260 acres of land Sorbets d'Armagnac in Bas Armagnac since 1870. The Lesgourgues family, who have been running the distillery since 1974, are proponents of sustainable agriculture. To that end, every year a herd of 600 ewes is scattered throughout the vineyard to produce a sizable quantity of organic manure. Château de Laubade also holds the distinction of being one of the very few properties in Armagnac that uses the four traditional grape varieties of the appellation. The assemblage consists of 47% Ugni Blanc, 30% Baco 22A, 15% Colombard and 8% Folle Blanche. Château de Laubade is also known for their use of an Alembic pot still, which was custom tailored for the distillery in 1974. The Armagnac is produced using only one single distillation and then laid to rest in casks that were coopered in house and sourced from various forests that surround the property.

This unique, privately bottled blend of Château de Laubade Armagnac, was made in honor of the consignor's wedding celebration. It is comprised of a blend of the bride and groom's birth year vintages: 1948 and 1956.

### Château de Laubade, Armagnac, Special Reserve

*Bas Armagnac*

*Lots 119-130 levels: 4cm or better; a blend of 1948 and 1956*

*In individual wooden presentation boxes inside original cartons*

*Parcel: lots 119-130*

119	12 bottles	<i>per lot \$1,500-2,000</i>
120	12 „	
121	12 „	
122	12 „	
123	12 „	
124	12 „	
125	12 „	
126	12 „	
127	12 „	
128	12 „	
129	12 „	
130	12 „	

## Baron de Sigognac, Armagnac, Millenium 1900

*Bottled 1998*

*In wooden presentation case*

131 1 bottle *per lot \$1,400-1,800*

### Erté Collection by Courvoisier

**No. 1 Vigne** (1)

**No. 2 Vendages** (1)

**No. 3 Distillation** (1)

**No. 4 Vieillissement** (1)

**No. 5 Dégustation** (1)

**No. 6 L'Esprit du Cognac** (1)

**No. 7 La Part des Anges** (1)

**No. 8 Inédit** (1)

132 8 bottles *per lot \$6,000-9,000*

**Glenfiddich 40 Year Old**

*Speyside*

*Rare Collection, bottled by Master Distillers November 28, 2002,*

*bottle 305 of 600, 45.4% ABV*

*In wooden presentation case*

133

1 bottle

per lot \$3,200-4,500





*The*  
**MACALLAN**

**N°6**  
IN LALIQUE

HIGHLAND SINGLE MALT  
SCOTCH WHISKY



# N° 6

## MACALLAN N° 6

Macallan N° 6 is comprised of whiskies aged in first-fill sherry casks and represents the six pillars of Macallan: Easter Elchies—the spiritual home of Macallan, curiously small stills, the finest spirit cut, exceptional casks, Natural color, and peerless spirit.

### The Macallan Lalique N° 6

*Speyside*

*Both lots in custom six-faceted Lalique decanter and stopper*

*Both lots in original presentation cases*

*Parcel: lots 134-135*

“I’ve always been a fan of Macallan, it might be due to its Highland origins, so smooth are the single-malts that come from this region. I’m not really sure. I just know that no matter the age Macallan has the right balance of spice, fruit, oak and smoothness. That last one perhaps being one of The Macallan’s most attractive trait for me.”

—Scott Torrence, *VP, Senior Specialist*

134	1 bottle	<i>per lot</i> \$3,000-4,000
135	1	„

**Highland Park**

*Orkney Islands*

**27 Year Old**

*Specially selected and bottled in Scotland for the Jolly Beggars  
Scotch Society, 54.9% ABV, no. 8293*

*In original wooden presentation case (1)*

**Bicentenary 1977**

*43% ABV, no. 01143, in original presentation case (1)*

136 2 bottles *per lot \$1,200-1,600*

**Brora 30 Year Old, 1972**

*Highland*

*Cask strength, distilled 1972, bottled 2002, 52.40% ABV*

136A 1 bottle *per lot \$1,800-2,400*

**Royal Lochnagar, Selected Reserve**

**Single Highland Malt**

*Highland*

*43% ABV*

*In individual wooden presentation cases*

136B 3 bottles *per lot \$700-900*



**Glenfiddich**

*Speyside*

**12 Year Old Centenary Bottling (1)**

**Mary Queen of Scots**

*In Bonnie Prince Charlie porcelain decanter (1)*

137 2 bottles *per lot \$600-850*



# GLENMORANGIE

## Glenmorangie

Highland

### Tain l'Hermitage 1975

Finished in Hermitage casks, in original wooden case (1)

### Claret Wood Finish

Finished in First Growth Bordeaux casks, 1976-1979, 43% ABV

In original wooden case (1)

### Côte de Nuits Wood Finish 1975

Finished in Grand Cru Burgundy casks, 43% ABV

In original wooden case (1)

### Port Wood Finish 1975

Finished in Port pipes, 46.8% ABV

In original carton (1)

### Malaga Wood Finish 25 Year Old

Finished in Malaga wood, 43% ABV, In original carton (1)

138

5 bottles per lot \$3,500-5,500



# SCAPA 1974

## Scapa, Old Malt Cask 25 Year Old 1974

Orkney Islands

Distilled November 1974, bottled July 2000 by

Douglas Laing & Co., 50% ABV

In original carton

139 2 bottles per lot \$1,000-1,400



## BOWMORE

### Bowmore

Islay

25 Year Old, Seagulls Ceramic

43% ABV

(1)

30 Year Old, Sea Dragon Ceramic

43% ABV, in presentation coffret

(1)

140 2 bottles per lot \$1,800-2,800



### Glen Grant 1948

Speyside

Bottled by Gordon and MacPhail, 40% ABV

140A 1 bottle per lot \$1,000-1,500

### Glen Grant 1950

Speyside

Bottled by Gordon and MacPhail, 40% ABV

140B 1 bottle per lot \$1,000-1,500

**MACALLAN 1972**

Macallan Anniversary 25 Year Old 1972

Speyside

Bottled 1998, 43% ABV

In original wooden case

141

1 bottle

per lot \$1,500-2,000

YEARS OLD  
*The*  
**MACALLAN**  
*Anniversary Malt*  
ESTABLISHED 1824  
A SPECIAL BOTTLING OF UNBLENDED  
SINGLE HIGHLAND MALT SCOTCH WHISKY  
25 YEARS OLD

IN THE HEART OF SPEYSIDE, IN THE REGION OF WHISKY MAKING FOR WHICH IT HAS BEEN THE HOME OF SCOTLAND'S FINEST MALT WHISKY—TASTING RECENTLY CONFIRMED WHEN IN 1962 THE MACALLAN MORE THAN ITS NEAREST RIVAL WON THE SPIRITS CATEGORY AGAINST COMPETITION FROM ALL OVER THE WORLD. WHAT IS THE SECRET OF THE WORLD'S GOLD MEDAL DISTILLERS? AND, WITH THE MACALLAN THIS COSTLY ON USING OAKEN CASKS ARE SET ASIDE TO SLUMBER LONGER IN THE MELLOWING OAK. UNTIL THE CONTENTS ARE RELEASED AS HERE TO OFFER YOU ONE OF LIFE'S FEW GENUINELY INCOMPARABLE EXPERIENCES DISTILLED AND BOTTLED BY THE MACALLAN DISTILLERS LTD CRAIGELACHIE SCOTLAND SOLE U.S.A. DISTRIBUTOR REMY AMERIQUE INC. NEW YORK, NY PRODUCT OF SCOTLAND

750 ml  
BOTTLED 1972

# VALHALLA

## Highland Park, The Valhalla Collection

Orkney Islands

*Odin: 16 Year Old, 55.8% ABV*

(1)

*Thor: 16 Year Old, 52.1% ABV*

(1)

*Loki: 15 Year Old, 48.7% ABV*

(1)

*Freya: 15 Year Old, 52.1% ABV*

(1)

142 4 bottles

per lot \$1,800-2,400



**RARITIES FROM BORDEAUX****Pétrus 1982***Pomerol, cru exceptionnel**Level: into neck; cut capsule reveals fully branded cork, glue stained label*143 1 bottle *per lot* \$2,200-3,200**Le Pin 1990***Pomerol*144 1 bottle *per lot* \$1,800-2,200**MONTRACHET****Domaine de la Romanée-Conti, Montrachet 2008***Grand Cru, Côte de Beaune*145 1 bottle *per lot* \$2,600-3,500**ROMANEE-CONTI 2009****Domaine de la Romanée-Conti, Romanée-Conti 2009***Grand Cru, Côte de Nuits*146 3 bottles *per lot* \$26,000-40,000**HENRI JAYER CROS PARANTOUX**

Cros Parantoux is the most emblematic vineyards of Henri Mayer's production. The vineyard is today regarded as one of the greatest of all of the Premier Cru vineyards in Burgundy, and many would posit it as a candidate for promotion to Grand Cru. It is a small vineyard of 1.01 ha, which is split between two owners: the Méo-Camuzet family owns just under 0.3 ha, and the Mayer family just over 0.7 ha, vines that are now leased to Emmanuel Rouget as is the rest of the Mayer family estate. The vineyard is located next to Richebourg with a very good eastern exposure and little of the influence from cold northern winds to which the "Les Verouilles" section of Richebourg is subject.

**Henri Mayer, Vosne-Romanée, Cros Parantoux 1980***1er Cru, Côte de Nuits*147 2 bottles *per lot* \$6,500-8,500**Henri Mayer, Vosne-Romanée, Cros Parantoux 1987***1er Cru, Côte de Nuits**Levels: 2.5cm*148 1 bottle *per lot* \$3,500-5,500**LEROY****Domaine Leroy, Romanée-Saint-Vivant 2002***Grand Cru, Côte de Nuits*149 1 bottle *per lot* \$1,800-2,200**Domaine Leroy, Musigny 2002***Grand Cru, Côte de Nuits*150 3 bottles *per lot* \$7,500-10,000**ROUMIER****Georges Roumier, Chambolle-Musigny, Les Amoureuses 1996***1er Cru, Côte de Nuits*151 1 bottle *per lot* \$900-1,200**ROUSSEAU****Armand Rousseau, Chambertin 1993***Grand Cru, Côte de Nuits*152 1 bottle *per lot* \$1,500-1,900**Armand Rousseau, Chambertin 2003***Grand Cru, Côte de Nuits**Two scuffed labels**In two six-bottle original cartons*153 12 bottles *per lot* \$7,500-11,000**Armand Rousseau, Chambertin 2004***Grand Cru, Côte de Nuits**One scuffed label**In original carton*154 12 bottles *per lot* \$6,000-8,000**CRISTAL****Louis Roederer, Cristal 1979***Reims**Two scuffed labels, one nicked label*155 4 bottles *per lot* \$2,800-3,500**Louis Roederer, Cristal 1985***Reims*156 1 jeroboam *per lot* \$3,200-4,200**Louis Roederer, Cristal Rosé 1979***Reims**Three slightly torn labels*157 8 bottles *per lot* \$12,000-18,000**Louis Roederer, Cristal Rosé 1990***Reims*158 2 bottles *per lot* \$1,000-1,500**DOM PERIGNON****Dom Pérignon 1955***Epernay*159 1 bottle *per lot* \$500-700**Dom Pérignon 1990***Epernay*160 6 bottles *per lot* \$1,200-1,800**Dom Pérignon 2002***Epernay**Andy Warhol labels*161 6 bottles *per lot* \$750-1,100

**LEFLAIVE****Domaine Leflaive, Chevalier-Montrachet 2000***Grand Cru, Côte de Beaune**Wine stained labels, one nicked label, wine stained vintage tags, one with signs of old seepage*162 2 bottles *per lot \$800-1,000***Domaine Leflaive, Chevalier-Montrachet 2002***Grand Cru, Côte de Beaune**In original wooden case*163 6 bottles *per lot \$2,800-3,800*

*The only bottle of d'Auvenay in this sale is the 2000 Chevalier Montrachet. A metaphor for its rarity? Don't spend too much time thinking as someone might get it.*  
—Richard Young, Associate Specialist

**DOMAINE D'AUVENAY****Domaine d'Auvenay, Chevalier-Montrachet 2000***Grand Cru, Côte de Beaune**Nicked label*164 1 bottle *per lot \$2,000-3,000***RAMONET****Domaine Ramonet, Montrachet 2004***Grand Cru, Côte de Beaune**In original carton*165 6 bottles *per lot \$3,500-4,500***Domaine Ramonet, Bienvenues-Bâtard-Montrachet 2004***Grand Cru, Côte de Beaune*166 6 bottles *per lot \$1,100-1,500***COCHE-DURY**

Jean-François Coche began working in the family vineyards alongside his father, Georges, becoming the third generation of Coches to tend the vines. His marriage to Odile Dury in 1795 added to the family holdings, which lead to the formation of the Domaine Coche-Dury. The Domaine owns 0.34 hectares of Corton-Charlemagne which was planted in 1960. They have significant holdings in Meursault, including 4 hectares of Meursault, 0.33 hectares of 1er Cru Meursault-Caillerets, 0.5 hectares of 1er Cru Meursault-Perrières, 0.7 hectares of Meursault Les Rougeots and 0.12 hectares of Meursault Les Chavalières. The winemaking is traditional with extended lees contact which prevents oxidation and adds complexity and mouth feel. All of the wines are bottled unfiltered.

**Coche-Dury, Corton-Charlemagne 2000***Grand Cru, Côte de Beaune**Nicked label*167 1 bottle *per lot \$1,700-2,600***Coche-Dury, Corton-Charlemagne 2002***Grand Cru, Côte de Beaune**Slightly depressed cork, scuffed vintage tag*168 1 bottle *per lot \$2,000-3,000***Georges Roumier, Corton-Charlemagne 1992***Grand Cru, Côte de Beaune**Level: 2cm*169 1 magnum *per lot \$450-650***Coche-Dury, Meursault, Les Rougeots 1996***1er Cru, Côte de Beaune**Level: 2cm*170 1 magnum *per lot \$1,600-2,000***Coche-Dury, Meursault 1999***Côte de Beaune*171 2 bottles *per lot \$600-900***LEFLAIVE****Domaine Leflaive, Bâtard-Montrachet 2000***Nicked label*

(1)

**2004***Two scuffed labels*

(4)

**Domaine Leflaive, Bienvenues-Bâtard-Montrachet****2000**

(1)

172 6 bottles *per lot \$1,600-2,000*

*Domaine Leflaive is arguably one of the most elegant producers of white Burgundy. This lot offers the high-acid 2004 vintage in magnum, making it a perfect summer wine.*  
—Layla Khabiri Junior Specialist

**Domaine Leflaive, Bâtard-Montrachet 2004***One nicked label*

magnum (3)

**Domaine Leflaive, Bienvenues-Bâtard-Montrachet****2004**

magnum (3)

173 6 magnums *per lot \$2,800-3,500***Domaine Michel Niellon, Bâtard-Montrachet 2007***Scuffed labels*

(3)

**Domaine Ramonet, Bâtard-Montrachet****1996***Level: 1cm, nicked label*

(1)

**2000**

(2)

174 6 bottles *per lot \$1,300-1,700***Domaine Michel Niellon, Chevalier-Montrachet***Côte de Beaune, Grand Cru***2004***Lightly scuffed label*

(1)

**2007***Two lightly scuffed labels*

(3)

175 4 bottles *per lot \$1,100-1,500*

**MONTRACHET****Domaine Ramonet, Montrachet***Grand Cru, Côte de Beaune***1999***One nicked label* (2)**2000** (1)**2002** (3)176 6 bottles *per lot* \$5,000-7,500**Domaine Marc Colin, Montrachet 2007** (2)**Louis Jadot, Montrachet 1999** (1)**Louis Carillon, Bienvenues-Bâtard-Montrachet 2004** (1)**Verget, Corton-Charlemagne 2002** (2)177 6 bottles *per lot* \$1,100-1,500**VERTICALS OF COCHE-DURY****Coche-Dury, Meursault, Les Rougeots***1er Cru, Côte de Beaune***2000***Nicked label* (1)**2001***One with signs of old seepage* (2)**2004** (2)**2007** (2)178 7 bottles *per lot* \$2,400-3,000**VERY RARE BOTTLE OF MEURSAULT, LES PERRIERES 1978****Coche-Dury, Meursault, Les Perrières 1978***1er Cru, Côte de Beaune**Level: 2.5cm, bin soiled label*179 1 bottle *per lot* \$1,600-2,400**Coche-Dury, Meursault, Les Perrières***1er Cru, Côte de Beaune***1983***Level: 2cm; slightly depressed cork* (1)**1993***Level: 1cm; slightly depressed cork* (1)**1996***Level: 1cm* (1)**1999***Slightly scuffed label, torn vintage tag* (1)180 4 bottles *per lot* \$4,500-5,500**Coche-Dury, Meursault, Les Perrières***1er Cru, Côte de Beaune***2000***Mixed importers* (2)**2001***Lightly nicked and bin soiled label* (1)**2002***One torn vintage tag, one slightly depressed cork, mixed importers* (2)**2004** (1)181 6 bottles *per lot* \$7,500-9,500**Coche-Dury, Puligny-Montrachet, Les Enseignères****1999** (1)**Domaine Leflaive, Puligny-Montrachet****Les Pucelles 2002***In original wooden case* (6)182 7 bottles *per lot* \$1,400-1,800**Domaine des Comtes Lafon, Meursault****Clos de la Barre 1996***Level: 1.5cm* (1)**Domaine des Comtes Lafon, Meursault****Les Perrières 1992***Level: 1cm; one nicked label* (1)183 2 bottles *per lot* \$400-550**Georges Roumier, Bonnes Mares 2003** (3)**Georges Roumier, Chambolle-Musigny****Les Amoureuses****2002** (4)**2003** (3)**Comte Georges de Vogüé, Chambolle-Musigny****Les Amoureuses 2003** (2)184 12 bottles *per lot* \$7,500-9,000**Domaine de la Romanée-Conti, Richebourg 1996**

(1)

**Domaine de la Romanée-Conti, Echézeaux 1996** (1)*All levels: 1cm; scuffed labels*185 2 bottles *per lot* \$1,600-2,000**Joseph Roty, Griottes-Chambertin 1999***Bin soiled and nicked label* (1)**Armand Rousseau, Chambertin 2006** (1)186 2 bottles *per lot* \$900-1,200**Séraphin Père & Fils, Charmes-Chambertin***Grand Cru, Côte de Nuits***1999** (4)**2005** (2)**2006** (2)187 8 bottles *per lot* \$950-1,200**Séraphin Père & Fils, Gevrey-Chambertin****Les Cazetiers 2004** (1)**Domaine Forey, Vosne-Romanée, Les Gaudichots****2004** (1)**2005** (1)**Comte Armand, Pommard, Clos des Epeneaux 2006***One marked label* (6)188 9 bottles *per lot* \$650-850

**CHAVE HERMITAGE****Jean Louis Chave, Hermitage 2010***Rhône*189 3 bottles *per lot* \$900-1,100**UNICO****Vega Sicilia, Unico***Ribera del Duero***1962***Bin soiled and torn label* (1)**1968***Faded and torn label, import strip label adhered to front label* (1)**1970***Lightly damp stained label**In individual original wood case with missing lid* magnum (1)*All levels: bottom neck*190 1 magnum and 2 bottles *per lot* \$3,200-4,200**Weingut Max Ferd. Richter, Mülheimer****Helenenkloster Riesling Eiswein 2001** half-bottle (1)**Weingut Max Ferd. Richter, Brauneberger Juffer****Sonnenuhr Riesling Trockenbeereauslese 2001***One torn label* half-bottles (3)**Müller-Catoir, Mußbacher Eselskaut Riesling****Trockenbeereauslese 1999***Two marked labels* half-bottles (3)191 7 half bottles *per lot* \$850-1,000**Kongsgaard, Chardonnay 1999***Napa Valley**Cracked wax capsule*192 1 jeroboam (3L) *per lot* \$600-800**Chambers Rosewood Vineyards, Rutherglen Rare****Tokay** half-bottles (2)**Chambers Rosewood Vineyards, Rutherglen****Special Muscat***One marked label* half-bottle (1)**Alois Kracher, Nouvelle Vague No. 13,****Chardonnay Trockenbeereauslese 1998***One corroded capsule* (3)193 3 bottles and 3 half-bottles *per lot* \$400-550

Savor these one at a time after dinner or serve them side by side to explore the multifaceted world of sweet, botrytised wines.

—Layla Khabiri *Junior Specialist*

**Château Caillou, Crème de Tête 1959***Level: into neck* (1)**Château Climens 1959***Level: top shoulder, signs of old seepage* (1)**Château d'Yquem 1983***Level: bottom neck* (1)**Château Doisy-Daëne, L'Extravagant de Doisy-Daëne****1996***Levels: 1cm; in original wood case* half-bottle (1)**1997***In original wood case* half-bottle (1)**Royal Tokaji Wine Co. Tokaji Essencia 1993***Levels: 1.5cm or better* 500ml (2)194 3 bottles and 2 500ml bottles and 2 half-bottles *per lot* \$1,300-1,700**Château Haut-Brion 1945***Pessac (Graves), 1er cru classé**Levels: upper mid shoulder; bin soiled label, short capsules reveals fully branded cork, Selection Nicolas stamped label*195 1 bottle *per lot* \$1,800-2,600**Château Haut-Brion 1971***Pessac (Graves), 1er cru classé**Levels: five 4cm, three 4.5cm, two 5.5cm; one bin soiled label, one nicked label, two slightly torn labels, one slightly torn capsule*196 10 bottles *per lot* \$1,600-2,400



## LAFITE

The name Lafite comes from the Gascon language term "la hite", which means "hillock". The estate is situated at the northern end of Pauillac, close to Cos d'Estournel which is just over the border in St.-Estephe. The vineyard consists of three major areas: the hillsides around the Château, the adjacent Carruades plateau to the west, and 4.5 hectares in neighboring Saint-Estèphe.

### Château Lafite-Rothschild 1970

*Pauillac, 1er cru classé*

*Lot 197 levels: top shoulder; four nicked labels, eight torn and partially missing labels*

*Lot 198 levels: two top shoulder, ten upper shoulder; seven nicked labels, five torn and partially missing labels*

*Lot 199 levels: two top shoulder, eight upper shoulder, two upper mid; nine nicked labels, one heavily torn label, one torn capsules, three oxidized capsules, mixed importers*

*Lot 200 levels: upper mid shoulder; seven nicked labels, two torn and partially missing labels*

*Lot 201 levels: upper mid shoulder; three nicked labels, nine torn and partially missing labels, four oxidized capsules*

*Lot 202 levels: mid shoulder; one nicked label, three torn labels, one oxidized capsule*

*Lot 203 levels: mid shoulder; seven nicked labels, four torn and partially missing labels, one slightly depressed cork, four oxidized capsules*

*Lots 197-202 in original wooden cases*

197	12 bottles	per lot \$2,400-3,500
198	12 ,,	
199	12 ,,	
200	12 ,,	
201	12 ,,	
202	12 ,,	
203	4 ,,	per lot \$800-1,200

### Château Lafite-Rothschild 1971

*Pauillac, 1er cru classé*

*Lot 204 levels: nine top shoulder, three upper shoulder; torn and partially missing labels, three with vintage not visible*

*Lot 205 levels: seven top shoulder or better, four upper shoulder, one upper mid shoulder; torn and partially missing labels*

*Lot 206 levels: ten upper shoulder, two upper mid shoulder; torn and partially missing labels, four labels with vintage not visible, two wine stained labels, mixed importers*

*Lot 207 levels: upper mid shoulder; ten torn labels, one wine stained label*

*Lots 204-205, 207 in original wooden case*

204	12 bottles	per lot \$2,800-4,200
205	12 ,,	
206	12 ,,	
207	11 ,,	per lot \$2,600-3,800

### Château Lafite-Rothschild 1975

*Pauillac, 1er cru classé*

*Lot 208 levels: top shoulder; ten torn and partially missing labels*

*Lot 209 levels: seven top shoulder, five upper shoulder; one nicked label, five heavily torn labels*

*Lot 210 levels: one upper shoulder, eight upper mid shoulder; seven heavily torn labels*

*Lots 208-209 in original wooden cases*

208	12 bottles	per lot \$3,000-4,800
209	12 ,,	
210	9 ,,	per lot \$2,200-3,500

### Château Lafite-Rothschild 1976

*Pauillac, 1er cru classé*

*Levels: eight top shoulder, three upper shoulder, one upper mid shoulder; eight torn and partially missing labels, four heavily torn labels*

*In original wood case*

211	12 bottles	per lot \$3,500-5,000
-----	------------	-----------------------

### Château Latour 1971

*Pauillac, 1er cru classé*

*Levels: ten upper shoulder, two upper mid shoulder; one torn capsule*

*In original wood case*

212	12 bottles	per lot \$2,800-4,000
-----	------------	-----------------------

### Château Margaux 1959

*Margaux, 1er cru classé*

*Lot 213 levels: four upper shoulder, two upper mid shoulder; one damp stained label, one slightly wine stained label*

*Lot 214 levels: mid shoulder*

213	6 bottles	per lot \$3,000-4,500
214	2 ,,	per lot \$1,000-1,500

### Château Mouton-Rothschild 1975

*Pauillac, 1er cru classé*

*Lot 215 levels: five upper shoulder, seven upper mid shoulder; eight scuffed labels, three nicked labels, one glue stained label*

*Lot 216 levels: upper mid shoulder; nine scuffed labels, two nicked labels, one corroded capsule*

*Lots 215-216 in original wooden cases*

215	12 bottles	per lot \$2,400-3,500
216	12 ,,	

### Château Lafite-Rothschild

*Pauillac, 1er cru classé*

#### 1976

*Levels: two top shoulder, one upper shoulder, four upper mid shoulder; heavily torn labels* (7)

#### 1977

*Level: top shoulder; oxidized capsule, heavily torn label* (1)

#### 1980

*Level: top shoulder; slightly scuffed label* (1)

217	9 bottles	per lot \$2,200-3,000
-----	-----------	-----------------------

**Château Latour***Pauillac, 1er cru classé***1969***Level: upper shoulder; bin soiled label* (1)**1970***Levels: one upper shoulder, one upper mid shoulder; one corroded capsule, bin soiled labels, one slightly depressed cork, mixed importers* (2)**1971***Level: upper mid shoulder, one torn capsule* (2)**1975***Levels: two top shoulder, two upper shoulder; three damp stained labels* (4)**1976***Levels: upper shoulder, one nicked label* (3)218 12 bottles *per lot \$2,200-2,600***Château Margaux 1982***Level: upper shoulder; bin soiled label* (1)**Château Mouton Rothschild****1970***Level: upper mid shoulder; heavily damp stained label* (1)**1971***Level: upper mid shoulder; scuffed and bin soiled label* (1)219 3 bottles *per lot \$800-1,000***Chateau Lascombes 1928***Level: upper shoulder; bin soiled label, slightly depressed cork, "Rebouché 1959" branded on cork* (1)**Chateau Talbot****1949***Level: top shoulder* (1)**1961***Levels: top shoulder in Cordier bottle* (2)220 4 bottles *per lot \$800-1,000***Château La Mission Haut Brion 1976***Level: upper shoulder; heavily torn label* (1)**Château Batailley 1970***Levels: two top shoulder, two upper shoulder; one nicked label, mixed importers* (4)**Château Canon 1970***Level: upper shoulder; bin soiled label* (1)**Château Giscours 1970***Level: upper shoulder; bin soiled label* (1)**Château Talbot 1970***Level: 5cm* (1)221 8 bottles *per lot \$400-600***Château Gruaud-Larose 1949***Saint-Julien, 2ème cru classé**Levels: one top shoulder, one upper shoulder, one mid upper shoulder; one heavily bin soiled label*222 3 bottles *per lot \$1,200-1,800***PETRUS**

It is hard to imagine a world without Pétrus, for in the sphere of wine, Pétrus circles and radiates its influence like a celestial body. Yet 30 years ago it was virtually unknown- a small farm of 11.4 hectares nested on a plateau in the highest part of eastern Pomerol. The vineyard is almost entirely made up on clay, perfect for the dark berries of Merlot that flourish there. The vines are famously old and are not replanted until after they reach their 70th year. The wines are hand harvested in the afternoon, fermented in cement and aged in 100% new oak. It is bottled unfiltered after two years in barrel.

**Pétrus 1966***Pomerol, cru exceptionnel**Level: upper shoulder*223 1 bottle *per lot \$1,000-1,500***Pétrus 1967***Pomerol, cru exceptionnel**Levels: two top shoulder, eight upper shoulder; wrinkled labels, two nicked labels*224 10 bottles *per lot \$10,000-14,000***Pétrus 1969***Pomerol, cru exceptionnel**Level: top shoulder*225 1 bottle *per lot \$800-1,200***Pétrus 1970***Pomerol, cru exceptionnel**Lot 226 levels: upper mid shoulder; bin soiled labels, two nicked labels, three heavily torn labels, one torn and partially missing label, one cut capsule revealing fully branded cork**Lot 227 levels: one top shoulder, three upper shoulder; bin soiled and nicked labels, mixed importers*226 6 bottles *per lot \$6,000-9,000*227 4 ,, *per lot \$4,000-6,000***Pétrus 1973***Pomerol, cru exceptionnel**Levels: three top shoulder, five upper shoulder; torn and partially missing labels, one corroded capsule reveals slightly depressed cork*228 8 bottles *per lot \$5,500-8,500*

**Pétrus 1974***Pomerol, cru exceptionnel**Levels: one upper shoulder, one mid upper shoulder; one corroded capsule*229 2 bottles *per lot \$1,400-2,200***Pétrus 1975***Pomerol, cru exceptionnel**Levels: mid upper shoulder; two lightly torn labels*230 3 bottles *per lot \$3,000-4,500***Pétrus 1976***Pomerol, cru exceptionnel**Lot 231 levels: eight top shoulder, four upper shoulder; three nicked labels, nine torn and partially missing labels, one wine stained label**Lot 232 levels: six top shoulder, six upper shoulder; five nicked labels, two heavily torn labels**Lot 233 levels: eight upper shoulder; four mid upper shoulder, three nicked labels, two torn labels, seven torn and partially missing labels, two with signs of old seepage**Lot 234 levels: one upper mid shoulder, three mid shoulder; one heavily torn label, three slightly torn labels, corroded capsules, one with signs of old seepage, mixed importers**Lots 231-233 in original wooden cases*231 12 bottles *per lot \$8,500-13,000*

232 12 „

233 12 „

234 4 „ *per lot \$2,800-4,000***Pétrus 1978***Pomerol, cru exceptionnel**Levels: one top shoulder, one upper mid shoulder; heavily torn labels*235 2 bottles *per lot \$1,600-2,400***MATURE DOM PERIGNON****Dom Pérignon 1962***Epemay**Levels: one 3cm, two 3.5cm below short foil; one nicked label*236 3 bottles *per lot \$2,400-3,500***Dom Pérignon 1964***Epemay**Lot 237 levels: seven 4cm, five 4.5cm below short foil; two scuffed labels**Lot 238 levels: 4.5cm below short foil, five scuffed labels*237 12 bottles *per lot \$7,500-11,000*

238 12 „

**Dom Pérignon 1966***Epemay**Lot 239 levels: five 2.5cm, seven 3cm below short foil; one scuffed label, one nicked label**Lot 240 levels: one 3cm, five 3.5cm, one 4cm below short foil; two scuffed labels*239 12 bottles *per lot \$6,000-9,000*240 7 „ *per lot \$3,500-5,000***G. H. Mumm René Lalou***Reims***1961** (1)**1966** (6)*Two with signs of old seepage**All levels: 0.5cm or better; bin soiled labels*241 7 bottles *per lot \$1,800-2,200*

# RARITIES DIRECT FROM THE CELLARS OF CHAMPAGNE HENRIOT

## RARITIES DIRECT FROM THE CELLARS OF CHAMPAGNE HENRIOT

### PROCEEDS INTENDED TO BENEFIT UNIVERSITY SETTLEMENT

A portion of the proceeds from Champagne Henriot's auction lots will go to University Settlement. Champagne Henriot is a long time partner of University Settlement and supports their mission to tackle poverty by transforming families. One by one.

### UNIVERSITY SETTLEMENT

Nearly 130 years ago, University Settlement launched an innovative movement that changed New York City and the country.

With University Settlement leading, settlement houses established the idea that immigrants and low-income families deserve basic services like quality education, decent housing, access to open space for exercise and health, and support for the aging. They proved that with a little help, these families could get a foothold on the American dream.

Providing social services that give families a helping hand has become part of our national fabric. University Settlement has continued to set the standard and invent best practices for others to follow in America.

Today, University Settlement has remained true to its first principle: to strengthen a community, you must strengthen families. And to strengthen a family, you must provide a range of services and support. Not just childcare. Not just after-school programs. Not just education for adults or meals for seniors.

Providing integrated services that strengthen a whole family makes all the difference.

Source: [www.universitysettlement.org](http://www.universitysettlement.org)



## CUVE 38

CUVE 38 is the ultimate in assemblage across eight generations of the Henriot family. It represents the DNA of the Maison's style. A blend of Grand Cru Chardonnay from the Côte de Blancs (four villages: Mesnil-sur-Oger, Chouilly, Avize and Oger), first conceived in 1990 by Joseph Henriot and released by the next generation. Since its inception each year 3-20% of Henriot's harvest from these 4 villages are added to CUVE 38, dependent on the decision of the Chef de Cave, an equivalent proportion is drawn off to create this exceptional wine. A limited edition, bottled entirely in magnum, with only about 1,000 bottles released each year.

2016 marks the second release of CUVE 38, a blend of vintages 1990 through 2008, bottled in 2010. This wine expresses the continuity of the Henriot style, since the creation of the House in 1808, a family signature.

### THE CUVE 38 EXPERIENCE LOT

With a purchase of three magnums of CUVE 38, the successful bidder will enjoy a private tour of the Henriot winery and cellars including an exceptional tasting with Laurent Fresnet, Henriot's Chef de Cave. The experience will conclude lunch for up to four people at Les Aulnois with Laurent Fresnet. To reaffirm the family's roots in Champagne, Thomas Henriot acquired the magnificent Les Aulnois, an 18th century manor house in Pierry on the outskirts of Epernay. Its idyllic setting possesses all the charm of a family home – both warm and welcoming. Date and time of appointment to be mutually agreed.

### Henriot, CUVE 38, Blanc de Blancs

Reims

*Second release (1990-2008), with a private tour, tasting and lunch for four at Les Aulnois with Laurent Fresnet, Henriot Chef de Cave*

*In individual original presentation cases*

“The bouquet is marked by intense minerality and white peach, with notes of brioche and browned butter. On the palate the champagne has an amazing freshness, despite its average age of 10 years, with an unparalleled complexity. Notes of yellow and white peaches, nectarine and apricot are fairly intense and are complimented by a sweet cream butter richness, flecked with vanilla bean and salted caramel. The recommended serving temperature is 10C/50F, higher than normally recommended for champagne to allow Cuve 38 to slowly warm to room temperature, best to properly showcase its complex aromatics.”

*–Laurent Fresnet, Chef de Cave, Champagne Henriot, April 2016*

HENRIOT

  
CHAMPAGNE  
**HENRIOT**  
MAISON FONDÉE EN 1808  
  
Cuve  
**1808**  
  
LA RÉSERVE PERPÉTUELLE  
BLANC DE BLANCS

HENRIOT  
Cuve  
**1808**  
LA RÉSERVE PERPÉTUELLE  
BLANC DE BLANCS



*Les Aulnois*  
Champagne, France

*Time is our ally and patience our secret.*

—Thomas Henriot



**CUVEE DES ENCHANTELEURS**

The name Enchanteleurs refers to the cellar workers in the days when vinification was carried out only in barrels. Their work consisted in particular of piling up the casks on wooden beams. It was said that they "put the casks on chantiers (gantries)", that they "enchanteaient"... They traditionally enjoyed the privilege of making for themselves a small Champagne cuvée produced from the finest wines.

The 1999 vintage is a special limited edition of Champagne Henriot's Cuvée des Enchanteleurs. On August 11th, 1999 at around midday, the sky over Champagne was plunged into darkness. A natural phenomenon, as rare as it was spectacular, a total eclipse of the sun. This special limited release is packaged in magnums only, illustrated with a photograph of the eclipse in the Champagne vineyards by French photographer Erwan Balanant. Sourced exclusively from Grand Cru vineyards, this cuvée is made only in exceptional years.

**Henriot, Cuvée des Enchanteleurs, Eclipse Limited Edition 1999**

Reims

*In individual original presentation cases*

243 3 magnums *per lot \$900-1,500*



*Henriot's rich, autolytic prestige cuvée, has always been an insiders' choice. The wine is only produced in exceptional years and aged in house for extended periods before release. I can only dream of what the 1964 might taste like.*  
—Noah May, Specialist

**Henriot, Cuvée des Enchanteleurs**

Reims

**1964**

(1)

**1988**

(1)

**1995**

(1)

*All in individual custom original wooden cases*

244 3 bottles *per lot \$1,100-1,700*





**VERY RARE BRUT MILLESIME JEROBOAMS**

Founded in Reims in 1808, Champagne Henriot celebrated its 200th birthday in 2008, joining the very exclusive circle of independent 200-year old family owned and managed champagne houses. Over the years Champagne Henriot has cultivated a unique style of its own, guided only by the pursuit of the rich, pure expression of Chardonnay. "Time is our ally and patience our secret" says Joseph Henriot. "They are the fundamental elements to our success."

Known for releasing their vintage champagnes only when they are ready to drink, Champagne Henriot's Brut Millésime is known for it's rich, full bodied style emblematic of the house.

**Henriot, Brut Millésime**

Reims

**1985**

**1988**

**1990**

*All in individual original wooden cases*

245

3 jeroboams

jeroboam (1)

jeroboam (1)

jeroboam (1)

per lot \$1,000-1,500



**RARE CHAMPAGNE****Bollinger, Grande Année 1990***Aÿ**Levels: above foil; scuffed labels**In original carton*246 3 magnums *per lot \$900-1,100***Louis Roederer, Cristal 1995***Reims**Levels: above foil; lightly oxidized neck labels*247 12 bottles *per lot \$1,800-2,400***Krug 1985***Level: above foil; lightly bin soiled label (1)***Louis Roederer, Cristal 1993***Levels: above foil (2)*248 3 bottles *per lot \$600-800***Krug 1982***Reims**Levels: above foil; lightly bin soiled labels, one scuffed and faded*249 4 bottles *per lot \$1,800-2,400***Krug 1989***Reims**Levels: above foil**In original carton*250 6 bottles *per lot \$1,500-1,900***Charles Heidsieck, Champagne Charlie 1985***Epemay**Levels: 0.5cm or better below foil*251 6 bottles *per lot \$900-1,200***Taittinger, Comtes de Champagne, Blanc de Blancs 1996***Reims*252 12 bottles *per lot \$2,400-3,500***EXCEPTIONAL CLARET****Pétrus 2005***Pomerol, cru exceptionnel**Two lightly wine stained labels, one wine stained label, two with signs of old seepage*253 3 bottles *per lot \$6,000-8,000***Château Lafite-Rothschild***Pauillac, 1er cru classé***1984***Level: into neck (1)***1986***Level: into neck; missing capsule (1)***1988***Levels: two into neck, one bottom neck; tissue stained labels (3)***1990***Levels: into neck; tissue stained labels (2)***1996***Levels: into neck; one nicked capsule (3)***1998***Ink pen inscribed labels (2)*254 12 bottles *per lot \$5,500-7,500***Château Lafite-Rothschild***Pauillac, 1er cru classé***1988***Level: into neck; one lightly nicked capsule half-bottle (1)**half-bottle (2)*255 3 half-bottles *per lot \$650-850***Château Lafite-Rothschild 1996***Pauillac, 1er cru classé**Levels: into neck*256 12 half bottles *per lot \$3,800-4,200***Château Lafite-Rothschild 2003***Pauillac, 1er cru classé*257 12 bottles *per lot \$7,000-9,000*258 3 bottles *per lot \$1,700-2,200*



One of the best values still among the Premier Crus in this much overlooked vintage. Specialist tip: The key to successfully serving up a 1999 Latour is to allow for 90-120 minutes breathing time.  
—Scott Torrence, VP, Senior Specialist

**LATOUR**

**Château Latour 1999**

*Pauillac, 1er cru classé*

259 12 bottles *per lot \$3,500-4,500*

**Château Latour 2000**

*Pauillac, 1er cru classé*

*In original wooden case*

260 12 bottles *per lot \$8,000-10,000*

**Château Latour 2003**

*Pauillac, 1er cru classé*

*In original wooden case*

261 12 bottles *per lot \$6,500-9,500*

**Château Latour 2004**

*Pauillac, 1er cru classé*

*In original wooden case*

262 12 bottles *per lot \$3,000-4,500*

**Château Latour**

*Pauillac, 1er cru classé*

**1986** (1)

**1989** (1)

**1990** (1)

**1994** (3)

**1995** (1)

**1996** (2)

**2003** (3)

*All levels: into neck; bin soiled labels*

263 12 bottles *per lot \$4,500-5,000*

**Les Forts de Latour 2005**

*Pauillac*

*In original wooden case*

264 12 bottles *per lot \$1,500-1,900*

**Château Mouton-Rothschild**

*Pauillac, 1er cru classé*

**1983** *Levels: three top shoulder; bin soiled labels* (3)

**1988**

*Level: bottom neck* (1)

**1996**

*Level: into neck* (1)

265 5 bottles *per lot \$1,100-1,500*

**Château Margaux 1982**

*Margaux, 1er cru classé*

*Levels: bottom neck; bin soiled labels*

266 4 bottles *per lot \$2,000-2,600*



The softness of the Merlot in this vintage is a great compliment to Cabernet Sauvignon that gives the wine that telltale Margaux character. Today I would put this up against the 1982 Margaux any day of the week!  
—Per Holmberg, VP, Head of Department

**Château Margaux 1983**

*Margaux, 1er cru classé*

*Levels: six bottom neck, four top shoulder; mixed importers*

267 10 bottles *per lot \$4,000-6,000*

**Château Margaux**

*Margaux, 1er cru classé*

**1985**

*Levels: two bottom neck, three top shoulder* (5)

**1989**

*Levels: four into neck, one bottom neck* (5)

268 10 bottles *per lot \$2,800-4,000*

**Château Margaux**

*Margaux, 1er cru classé*

**1990**

*Level: bottom neck; bin soiled label* (1)

**1996**

*Levels: into neck; mixed importers* (3)

269 4 bottles *per lot \$1,800-2,400*

**Château Margaux 1998**

*Margaux, 1er cru classé*

*In original wooden case*

270 24 half bottles *per lot \$3,000-4,000*

**Château Margaux 2003**

*Margaux, 1er cru classé*

*In original wooden case*

271 12 bottles *per lot \$4,000-4,800*

**Château Margaux 2004**

*Margaux, 1er cru classé*

*In original wooden case*

272 12 bottles *per lot \$3,000-3,500*

**Château Haut-Brion 1985**  
*Pessac (Graves), 1er cru classé*  
*Levels: six into neck, one bottom neck*  
 273 7 bottles per lot \$1,700-2,200

**Château Haut-Brion 1986**  
*Pessac (Graves), 1er cru classé*  
*Level: into neck; nicked and lightly scuffed label*  
 274 1 double magnum per lot \$1,400-1,800

**Château Haut-Brion 1990**  
*Pessac (Graves), 1er cru classé*  
*Levels: into neck; nicked and lightly scuffed labels*  
 275 10 bottles per lot \$4,500-6,000

**Château Haut-Brion 1994**  
*Pessac (Graves), 1er cru classé*  
*Levels: 1cm; bin soiled labels*  
 276 4 bottles per lot \$800-1,000

**Château Haut-Brion 1998**  
*Pessac (Graves), 1er cru classé*  
*In original wooden case*  
 277 12 bottles per lot \$3,000-4,200

**Château Haut-Brion 2005**  
*Pessac (Graves), 1er cru classé*  
*In original wooden case*  
 278 6 bottles per lot \$3,200-4,000

**Château La Mission-Haut-Brion 2000**  
*Pessac (Graves), cru classé*  
*In original wooden case*  
 279 12 bottles per lot \$5,000-7,000

**Château La Mission-Haut-Brion 2005**  
*Pessac (Graves), cru classé*  
*In original wooden case*  
 280 12 bottles per lot \$3,800-4,200

**Château Cheval-Blanc 1999**  
*Saint-Emilion, 1er grand cru classé (A)*  
*In original wooden case*  
 281 12 bottles per lot \$3,000-4,000

**Château Cheval-Blanc 2000**  
*Saint-Emilion, 1er grand cru classé (A)*  
*In original wooden case*  
 282 6 bottles per lot \$3,200-4,200

**Château Montrose**  
*Saint-Estéphe, 2ème cru classé*  
**1989**  
*Levels: three into neck, two bottom neck; mixed importers* (5)  
**1995**  
*Levels: into neck* (3)  
 283 8 bottles per lot \$1,400-1,900

**Château Montrose 2003**  
*Saint-Estéphe, 2ème cru classé*  
*In original wooden case*  
 284 12 bottles per lot \$1,800-2,400

**Château Lynch-Bages**  
*Pauillac, 5ème cru classé*  
**1982**  
*Level: bottom neck* (1)  
**1989**  
*Levels: into neck* (3)  
**1990**  
*Level: into neck* (1)  
*Above with bin soiled labels*  
 285 5 bottles per lot \$1,000-1,400

**Château Lynch-Bages 2000**  
*Pauillac, 5ème cru classé*  
*In original wooden case*  
 286 12 bottles per lot \$1,700-2,200

**Château Gruaud-Larose 1982**  
*Saint-Julien, 2ème cru classé*  
*Level: into neck; wrinkled and lightly bin soiled label*  
 287 1 magnum per lot \$500-700

**Château Léoville-Las-Cases 1990**  
*Levels: bottom neck; bin soiled labels* (3)  
**Château Grand-Puy-Lacoste 1990**  
*Levels: into neck* (2)  
 288 5 bottles per lot \$900-1,100

**Château Pape-Clément 2001**  
*Pessac (Graves), cru classé*  
 289 12 bottles per lot \$850-1,100

**Château Clinet 1995**  
*Pomerol*  
*Levels: bottom neck; one nicked capsule at top, mixed importers*  
 290 7 bottles per lot \$650-850

**Château La Conseillante 2000**  
*Pomerol*  
*Lot 292 wrinkled capsules*  
 291 12 bottles per lot \$1,800-2,400  
 292 10 ,, per lot \$1,500-2,000

**Château L'Eglise-Clinet 2001**  
*Pomerol*  
 293 12 bottles per lot \$1,500-1,900



Château Trotanoy 1998

Pomerol

In original wooden case

294 12 bottles

per lot \$2,400-3,000

**Vieux-Château-Certan 2001**  
*Pomerol*  
 295 10 bottles *per lot \$900-1,200*

**Château Angelus 2003**  
*Saint-Emilion, grand cru classé*  
*In original wooden case*  
 296 12 bottles *per lot \$2,400-3,200*

**BURGUNDY**

**Louis Jadot, Corton-Charlemagne 2008**  
*Grand Cru, Côte de Beaune*  
*In original wooden case*  
 297 6 bottles *per lot \$500-750*

**Faiveley, Latricières-Chambertin 1998**  
*Côte de Nuits*  
 298 11 bottles *per lot \$800-1,000*

**Henri Perrot-Minot, Mazoyères-Chambertin 1998**  
*Grand Cru, Côte de Nuits*  
 299 12 bottles *per lot \$1,200-1,800*

**Ponsot, Clos de la Roche, Vieilles Vignes 2001**  
*Grand Cru, Côte de Nuits*  
 300 12 bottles *per lot \$1,800-2,400*

**RHONE**

**Guigal, Côte-Rôtie, La Landonne**  
*Rhône*  
**1996** (2)  
**1997** (2)  
*All levels: 0.5cm*  
 301 4 bottles *per lot \$700-900*

**Guigal, Côte-Rôtie, La Mouline**  
*Rhône*  
**1996** (2)  
**1997** (3)  
*All levels: 0.5cm*  
 302 5 bottles *per lot \$900-1,100*

**Guigal, Côte-Rôtie, La Turquie 1997**  
*Rhône*  
*Levels: 0.5cm*  
 303 2 bottles *per lot \$400-500*

**Domaine du Pegau, Châteauneuf-du-Pape, Cuvée  
 Reservée 1998**  
*Rhône*  
*In original carton*  
 304 12 bottles *per lot \$600-800*

**Chave, Hermitage 1990**  
*Rhône*  
*Levels: 2cm*  
 305 2 bottles *per lot \$1,000-1,400*

**Jaboulet, Hermitage, La Chapelle 1989**  
*Rhône*  
*Levels: 2cm; one corner of label folded*  
 306 5 bottles *per lot \$750-1,000*

**100 POINT CABERNET**

**Shafer, Hillside Select, Cabernet Sauvignon 2002**  
*Napa Valley*  
 307 3 bottles *per lot \$750-1,000*

**Château La Mission-Haut-Brion 2000**  
*Pessac (Graves), cru classé*  
*Very lightly scuffed capsule*  
 308 1 imperial *per lot \$5,000-6,000*

**CHAVE**

**Chave, Hermitage Blanc 2002**  
*Rhône*  
 309 6 magnums *per lot \$800-1,200*

**Chave, Hermitage 2002**  
*Rhône*  
 310 10 bottles *per lot \$800-1,200*

**RARE JEROBOAM****Château de Beaucastel, Châteauneuf-du-Pape, Hommage à Jacques Perrin 1999**

*Rhône  
Lightly glue striped label  
In original wooden case*

311 1 jeroboam *per lot \$800-1,200*

**Guigal, Côte-Rôtie, La Landonne 2001**

*Rhône  
Lot 312 bin soiled and wine stained labels, two lightly torn labels, one wine stained label,  
Lot 313 six lightly scuffed capsules, one wrinkled capsule, three nicked labels, bin soiled and lightly stained labels,  
Lots 312-313 in original wooden cases with damaged lids*

312 12 bottles *per lot \$2,800-3,500*

313 12 ,,

**Guigal, Côte-Rôtie, La Mouline 1998**

*Rhône  
Two lightly scuffed capsules, one scuffed capsule, one lightly bin soiled label, one lightly nicked label  
In original wooden case*

314 9 bottles *per lot \$3,000-4,000*

**Les Cailloux, Châteauneuf-du-Pape, Cuvée Centenaire 2000**

*Rhône  
One wrinkled capsule  
In original carton*

315 12 bottles *per lot \$700-900*

**Domaine Pegau, Châteauneuf-du-Pape, Cuvée da Capo 2000**

*Rhône*

316 6 bottles *per lot \$2,000-2,600*

**AMARONE****Dal Forno, Amarone della Valpolicella 1998**

*Veneto  
Lots 317-318 one nicked label, two lightly wrinkled labels, one loose  
Parcel: lots 317-318*

317 6 bottles *per lot \$1,800-2,400*

318 6 ,,

**Warre 2000**

*Port  
Lots 319-320 scuffed and corroded capsules, nicked, lightly bin soiled, and stained labels  
Both lots in original wooden cases, missing sleeves*

319 12 bottles *per lot \$400-600*

320 12 ,,

**MOUTON****Château Mouton-Rothschild 1982**

*Pauillac, 1er cru classé  
Levels: bottom neck or better; four bin soiled labels, two nicked labels*

*In original wooden case*  
321 12 bottles *per lot \$9,000-12,000*

**Château Mouton-Rothschild 1982**

*Pauillac, 1er cru classé  
Levels: eight bottom neck or better, four top shoulder  
In original wooden case*

322 12 bottles *per lot \$9,000-12,000*

**Château Mouton-Rothschild 1986**

*Pauillac, 1er cru classé  
Levels: eight into neck, four bottom neck  
In original wooden case*

323 12 bottles *per lot \$7,000-10,000*

**Château Mouton-Rothschild 1986**

*Pauillac, 1er cru classé  
Levels: bottom neck; two nicked labels, one lightly rubbed label  
In original wooden case*

324 12 bottles *per lot \$7,000-10,000*

**Château Mouton-Rothschild 1986**

*Pauillac, 1er cru classé  
Levels: bottom neck or better; nicked capsules, lightly bin soiled labels*

*In original wooden case with broken lid*  
325 12 bottles *per lot \$7,000-10,000*

**Château Mouton-Rothschild 1988**

*Pauillac, 1er cru classé  
Levels: bottom neck; labels slightly wrinkled at edges*

326 5 bottles *per lot \$1,200-1,600*



PREMIER GRAND CRU  
CHATEAU MARGAUX  
GRAND VIN  
MIS EN BOUTEILLE AU CHATEAU  
1986  
GRAND CRU

PREMIER GRAND CRU  
CHATEAU MARGAUX  
GRAND VIN  
MIS EN BOUTEILLE AU CHATEAU  
1986  
GRAND CRU CLASSE  
MARGAUX  
APPPELLATION D'ORIGINE CONTRÔLÉE  
BORDEAUX FRANCE

PREMIER GRAND CRU  
CHATEAU MARGAUX  
GRAND VIN  
MIS EN BOUTEILLE AU CHATEAU  
1986  
GRAND CRU CLASSE  
MARGAUX  
APPPELLATION D'ORIGINE CONTRÔLÉE  
BORDEAUX FRANCE

PREMIER GRAND CRU  
CHATEAU MARGAUX  
GRAND VIN  
MIS EN BOUTEILLE AU CHATEAU  
1986  
GRAND CRU CLASSE  
MARGAUX  
APPPELLATION D'ORIGINE CONTRÔLÉE  
BORDEAUX FRANCE  
DISTRIBUTED BY  
S. D. V. F. BORDEAUX FRANCE  
NORTH HOLLYWOOD, CA. 750 ML  
ALCOHOL 12.5% BY VOLUME  
CONTAINS SULFITES  
RED WINE

CHATEAU MARGAUX  
1986  
GRAND CRU CLASSE  
MARGAUX



**Château Margaux 1986***Margaux, 1er cru classé**Levels: seven bottom neck, five top shoulder; scuffed capsules, lightly bin soiled labels**In original wooden case*327 12 bottles *per lot* \$3,800–5,000**Château Margaux 1986***Margaux, 1er cru classé**Levels: top shoulder; three with slight signs of old seepage, two heavily bin soiled and damp stained labels, three faded labels**In original wooden case*328 12 bottles *per lot* \$3,800–5,000

*Whilst many of the Premier Crus have already plateaued, the La Mission 1982 will likely outlive the likes of its sister property Haut Brion, dare I say either of the Rothschilds, Las Cases and Montrose.*

*—Scott Torrence, VP, Senior Specialist*

**Château La Mission-Haut-Brion 1982***Pessac (Graves), cru classé**Levels: bottom neck or better; one torn capsule**In original wooden case*329 12 bottles *per lot* \$7,000–10,000**Château La Mission-Haut-Brion 1982***Pessac (Graves), cru classé**Levels: bottom neck or better**In original wooden case*330 12 bottles *per lot* \$7,000–10,000**Château La Mission-Haut-Brion 1982***Pessac (Graves), cru classé**Levels: into neck**In original wooden case*331 12 bottles *per lot* \$7,000–10,000**Chapoutier, Côte-Rotie La Mordorée 1991***Rhône**Levels: 2cm or better**In original wooden case*332 12 bottles *per lot* \$1,500–2,000**Comte Georges de Vogüé, Musigny Vieilles Vignes 1990***Grand Cru, Côte de Nuits**Levels: 1cm or better; very lightly bin soiled labels*333 5 bottles *per lot* \$2,000–2,600**DOMAINE DE LA ROMANÉE-CONTI**

The Domaine de la Romanée-Conti owns 27 hectares of vines in prime sites in the commune of Vosne-Romanée together with a small holding in the Côte de Beaune. The top of the tree is Romanée-Conti itself, a monopole (wholly owned vineyard of 1.8 hectares), La Tâche, also a monopole with 6.06 hectares. Richebourg 3.51 hectares, Romanée-Saint-Vivant 5.29 hectares, Grands Echézeaux 3.53 hectares and 4.67 in Echézeaux. Also Vosne-Romanée, Suchots 1.02 hectares. Of the greatest white wine though, Montrachet DRC, only a precious 0.67 hectares and slightly less of Bâtard-Montrachet.

**Domaine de la Romanée-Conti, Richebourg 1985***Grand Cru, Côte de Nuits**Levels: two 1.5cm, four 2cm, four 2.5cm, one 3cm; one lightly corroded capsule, two slightly crowned capsules, seven lightly bin soiled labels, four bin soiled and stained labels, Frederick Wildman and Sons slip labels**In original wooden case, banded prior to Specialist inspection*334 11 bottles *per lot* \$17,000–24,000**Domaine de la Romanée-Conti, Richebourg 1985***Grand Cru, Côte de Nuits**Levels: two 1cm, seven 2.5cm, one 3cm, one 4cm; signs of old seepage; eleven slightly raised and lightly corroded capsules, lightly bin soiled labels, three heavily bin soiled labels and damp stained labels, Wilson Daniels slip labels**In original wooden case*335 11 bottles *per lot* \$17,000–24,000**Domaine de la Romanée-Conti, Richebourg 1990***Grand Cru, Côte de Nuits**Levels: eleven 2cm or better, one 3cm; lightly bin soiled labels, one stained label*336 12 bottles *per lot* \$24,000–35,000

## LA TACHE

La Tâche is considered by many the most consistently excellent wine of Vosne-Romanée. The complex geology of this site encompasses a number of different soil structures including decomposed limestone of the lower Bathonian period, pebble and limestone debris, and clay soil mixed with fossilized oyster deposits. This unique feature combined with the breadth of altitudes covered by the vineyard makes it an exquisite synthesis of Vosne-Romanée.

### Domaine de la Romanée-Conti, La Tâche 1985

Grand Cru, Côte de Nuits

Level: 3.5cm; lightly corroded capsule, very lightly wrinkled label

337 1 bottle per lot \$1,800-2,200

### Domaine de la Romanée-Conti, La Tâche 1986

Grand Cru, Côte de Nuits

Levels: one 1cm, one 1.5cm; one lightly corroded capsule, one scuffed capsule, one lightly wrinkled label, one lightly bin soiled label, one lightly wine stained neck tag

338 2 bottles per lot \$1,600-2,000

### Domaine de la Romanée-Conti, La Tâche 1988

Grand Cru, Côte de Nuits

Levels: two 1.5cm, one 2.5cm; very lightly scuffed capsules

339 3 bottles per lot \$3,000-4,000

### Domaine de la Romanée-Conti, La Tâche 1989

Grand Cru, Côte de Nuits

Level: 1.5cm; very slightly depressed cork, vintage neck tag partially detached

340 1 bottle per lot \$900-1,200

### Domaine de la Romanée-Conti, La Tâche 1992

Grand Cru, Côte de Nuits

Levels: three 1.5cm, one 2cm, one 2.5cm; two lightly bin soiled labels, one lightly nicked label, one lightly stained label

341 5 bottles per lot \$5,500-7,000

### Domaine de la Romanée-Conti, La Tâche 2004

Grand Cru, Côte de Nuits

342 2 bottles per lot \$2,400-3,200

## RICHEBOURG

Like many of the other vineyards in Vosne-Romanée, Richebourg originally belonged to the monastery of Citeaux. Today it is shared by a small handful of the region's best proprietors, with the largest holding belonging to the renowned Domaine de la Romanée-Conti. The vines of Richebourg average 45 years in age, with many dating back to the original replanting after the World War II. Each of the various factors which influence a wine's character and flavor unite flawlessly in the wines of Richebourg, which are celebrated as sumptuous, opulent, and marvelously enduring. Indeed, it is unquestionably the greatest non-monopoly grand cru of Vosne-Romanée.

### Domaine de la Romanée-Conti, Richebourg 1967

Grand Cru, Côte de Nuits

Levels: one 6cm, one 7cm; one lightly bin soiled and wine stained label, one bin soiled label

343 2 magnums per lot \$1,200-1,600

### Domaine de la Romanée-Conti, Richebourg 1991

Grand Cru, Côte de Nuits

Level: 1.5cm; lightly corroded capsule, faded at top, stained label

344 1 bottle per lot \$800-1,000

### Domaine de la Romanée-Conti, Richebourg 1992

Grand Cru, Côte de Nuits

Levels: 2cm; one heavily corroded capsule, one capsule slightly cut at top, lightly stained labels, one lightly nicked label

345 2 bottles per lot \$1,400-1,800

## ROMANEE-SAINT-VIVANT

When it comes to sheer finesse, perfume, elegance and delicacy, few wines can equal a great Romanée-Saint-Vivant. The history of the vineyard dates back to the thirteenth century, when Alix de Vergy reputedly gifted the vineyard to the Priory of St. Vivant and the Benedictines. Situated east of the boundary formed by La Romanée-Conti and Les Richebours, Romanée-Saint-Vivant's dazzling wines gracefully take their place among the greatest in the world.

### Domaine de la Romanée-Conti, Romanée-Saint-Vivant

Grand Cru, Côte de Nuits

1978

Level: 2cm; lightly oxidized and scuffed capsule, bin soiled and lightly wine stained label (1)

1986

Level: 1cm; very slightly depressed cork, lightly bin soiled label (1)

1989

Level: 1cm (1)

346 3 bottles per lot \$2,200-2,800

## GRANDS-ECHEZEAX

The wines of Grands Echezeaux are a thing of beauty, combining power with unadorned concentration that is smooth and never coarse. Lying directly to the west of Clos de Vougeot, the wines produced in this appellation are highly characterized by their longevity. For those who appreciate nuance, these are wines of glorious shades.

### Domaine de la Romanée-Conti, Grands-Echézeaux 1990

Grand Cru, Côte de Nuits

Level: 3.5cm; very lightly corroded and scuffed capsule, very lightly stained label

347 1 magnum per lot \$2,000-3,000

## ECHÉZEAX

The vineyard of Echezeaux stands as one of the largest Grand Crus in Burgundy. Given its size and the unique topography of the vineyard, the diversity and exceptionality of its terroir is highly acclaimed. The finest wines from this vineyard, best-known for their rustic, supple, and highly aromatic characteristics, are exceptionally opulent.

### Domaine de la Romanée-Conti, Echézeaux 1992

Grand Cru, Côte de Nuits

Levels: three 1cm, four 1.5cm, three 2cm, one 2.5cm, one 3.5cm; four lightly bin soiled labels

348 12 bottles per lot \$6,500-8,000

### Domaine de la Romanée-Conti, Echézeaux 1992

Grand Cru, Côte de Nuits

Levels: one 1cm, one 2.5cm, one 3cm; one very lightly corroded capsule, very lightly stained labels

349 3 bottles per lot \$1,500-2,000

### Domaine de la Romanée-Conti, Echézeaux 1997

Grand Cru, Côte de Nuits

One lightly damp stained label

In original wooden case, banded prior to Specialist inspection

350 6 bottles per lot \$3,000-4,000

### Domaine de la Romanée-Conti, Echézeaux

Grand Cru, Côte de Nuits

1985

Level: 1cm; very lightly corroded capsule, slight signs of old seepage, very lightly wrinkled label (1)

1986

Level: 2cm; lightly corroded capsule, very slightly depressed cork (1)

1988

Level: 4cm; lightly scuffed and corroded capsule, lightly stained label (1)

1990

Level: 1cm (1)  
351 4 bottles per lot \$2,600-3,500

### Maison Leroy, Savigny-lès-Beaune, Les Marconnets 1985

Level: 0.5cm; very lightly scuffed capsule, lightly stained and bin soiled label (1)

### Domaine Leroy, Richebourg 1991

Level: 0.5cm; slight signs of old seepage through wax (1)

### Domaine Leroy, Romanée-Saint-Vivant 1991

Level: 0.5cm; lightly bin soiled label (1)

352 3 bottles per lot \$1,800-2,200

### Domaine Leflaive, Chevalier-Montrachet 1990

Grand Cru, Côte de Beaune

Level: 1cm; slight signs of old seepage, lightly stained and bin soiled label, retail price tag adhered to bottle

353 1 bottle per lot \$500-600

### Bonneau du Martray, Corton-Charlemagne 1980

Levels: one 1cm, one 2cm; one lightly nicked and stained label, one nicked label, one lightly bin soiled label (2)

1988

Levels: two 0.5cm, one 1cm; one very lightly stained label, one lightly stained label (3)

### Pierre Bitouzet, Corton-Charlemagne 1986

Level: 1cm; lightly bin soiled and stained label (1)

### Joseph Drouhin, Corton-Charlemagne 1991

Level: 0.5cm; lightly faded and wrinkled label (1)

354 7 bottles per lot \$550-700

### Louis Latour, Corton-Charlemagne

1989

Level: 0.5cm; lightly corroded capsule, lightly bin soiled label (1)

1990

Level: 1cm; very lightly stained label (1)

1992

Level: 0.5cm; lightly bin soiled label (1)

1997

Lightly bin soiled label (1)

### Louis Latour, Bâtard-Montrachet 1992

Levels: 1 cm, one slightly depressed cork (2)

355 6 bottles per lot \$500-600

### Louis Latour, Corton-Charlemagne

Grand Cru, Côte de Beaune

1992

Level: 5cm; lightly bin soiled label magnum (1)

1996

One with slight signs of old seepage, four slightly protruding corks, two very lightly bin soiled labels magnum (4)

356 5 magnums per lot \$550-750

### Louis Latour, Corton-Charlemagne 2004

Grand Cru, Côte de Beaune

In original wooden case, banded prior to Specialist inspection

357 12 bottles per lot \$550-750

358 No Lot

**Château Latour 1964**

Level: bottom neck; oxidized and corroded capsule, signs of old seepage  
magnum (1)

**Château Haut-Brion 1968**

Level: top shoulder; heavily corroded capsule, partially exposed into the neck, signs of old seepage  
magnum (1)

359 2 magnums per lot \$800-1,100

**Château Mouton-Rothschild 1983**

Pauillac, 1er cru classé

Level: into neck; lightly bin soiled label

360 1 double magnum per lot \$800-1,000

**Château Beychevelle**

Saint-Julien, 4ème cru classé

**1979**

Levels: four top shoulder, two upper shoulder, one upper mid shoulder; four corroded capsules, two with signs of old seepage, lightly damp stained labels (7)

**1982**

Levels: two into neck, one bottom neck, two top shoulder; two nicked capsules (5)

361 12 bottles per lot \$750-950

**Williams Selyem, Feeney Vineyard Zinfandel 2006**

Sonoma Valley

Wax capsule, etched bottle

362 1 imperial per lot \$400-550

**Dom Pérignon 1975**

Epemay

Levels: two at foil, two at 1cm; lightly torn foil capsules, lightly bin soiled and torn labels

363 4 magnums per lot \$3,000-4,000

**Drouhin, Marquis de Laguiche, Montrachet 1996**

Grand Cru, Côte de Beaune

Scuffed labels

364 12 bottles per lot \$3,500-4,500

**Drouhin, Montrachet, Marquis de Laguiche 1989**

Grand Cru, Côte de Beaune

Level: 2cm; cracked wax capsule, partially missing at top, damp stained, bin soiled and torn label

365 1 jeroboam per lot \$1,800-2,400

**Pétrus 1989**

Pomerol, cru exceptionnel

Levels: into neck; scuffed capsules, lightly bin soiled labels

366 2 bottles per lot \$4,000-6,000

**Château Cheval-Blanc 1990**

Saint-Emilion, 1er grand cru classé (A)

Levels: bottom neck; lightly bin soiled labels

367 4 bottles per lot \$2,000-2,800

**Château Lafite-Rothschild 1945**

Pauillac, 1er cru classé

Level: upper shoulder; corroded capsule at top with cork exposed, Château embossed capsule revealing Château and vintage branded cork, bin soiled and nicked label

368 1 bottle per lot \$1,200-1,600

**Château Lafite-Rothschild 1961**

Pauillac, 1er cru classé

Levels: one top shoulder, one mid shoulder; one with slight signs of old seepage, scuffed capsules, heavily bin soiled labels, one nicked label, one torn label

369 2 bottles per lot \$1,000-1,400

**Château Lafite-Rothschild 2004**

Pauillac, 1er cru classé

In original wooden case, banded prior to Specialist inspection

370 12 bottles per lot \$4,500-6,000



MOËT et CHANDON à Epernay  
 Fondée en 1743  
 Champagne  
 Appellation d'Origine Contrôlée  
 Cuvée Dom Pérignon  
 Vintage 1975

MOËT et CHANDON à Epernay  
 Fondée en 1743  
 Champagne  
 Appellation d'Origine Contrôlée  
 Cuvée Dom Pérignon  
 Vintage 1975

★  
 PRODUCE OF FRANCE  
 NM 2340372  
 L. Deletre

MOËT et CHANDON à Epernay  
 Fondée en 1743  
 Champagne  
 Appellation d'Origine Contrôlée  
 Cuvée Dom Pérignon  
 Vintage 1975

**Château Mouton-Rothschild 1961***Pauillac, 1er cru classé**Levels: one upper shoulder, one upper mid shoulder; one scuffed capsule, one corroded capsule at top with cork partially exposed, lightly bin soiled labels*371 2 bottles *per lot* \$1,800-2,400**Château Mouton-Rothschild 1986***Pauillac, 1er cru classé**Levels: bottom neck; scuffed and nicked labels*372 2 bottles *per lot* \$900-1,200**Château Mouton-Rothschild 2001***Pauillac, 1er cru classé*373 9 bottles *per lot* \$2,200-3,000**Château Margaux***Margaux, 1er cru classé***1982***Levels: top shoulder; lightly bin soiled labels, one nicked label* (3)**1986***Levels: top shoulder; scuffed capsules, one lightly torn capsule, lightly bin soiled labels,* (2)374 5 bottles *per lot* \$1,800-2,800**Château Latour 1970***Levels: top shoulder; oxidized and nicked capsules* (2)**Château Mouton-Rothschild 1970***Level: upper shoulder; corroded capsule, torn, heavily bin soiled, and partially missing label* (1)**Château Lynch-Bages 1961***Level: top shoulder; nicked and lightly oxidized capsule, Selection Distinguée John Dennis" overlapping capsule, lightly bin soiled label* (1)**Château Haut-Bages-Liberal 1959***Level: mid shoulder; Château embossed capsule, revealing vintage branded cork, badly torn and partially missing label adhered with tape* (1)**Château Clinet 1988***Levels: bottom neck or better; bin soiled labels* (2)375 7 bottles *per lot* \$1,000-1,500**Château Palmer***Cantenac (Margaux), 3ème cru classé***1966***Levels: three top shoulder, one upper shoulder; corroded capsules, two detached labels, one adhered with tape, one loose and bin soiled label, one torn label* (4)**1989***Levels: bottom neck; scuffed capsules, lightly bin soiled labels* (3)376 7 bottles *per lot* \$3,200-5,000**Château d'Yquem 1947***Sauternes, 1er grand cru classé**Level: top shoulder; Château and vintage embossed, wrinkled, and bin soiled capsule revealing Château and vintage branded cork, heavily bin soiled label*377 1 bottle *per lot* \$1,000-1,500**Château d'Yquem***Sauternes, 1er grand cru classé***1962***Levels: bottom neck; corroded capsules, two nicked and partially missing capsules, two heavily bin soiled labels, one torn and loose, one remains of label only, one missing label* (4)**1986***Levels: top shoulder* (2)378 6 bottles *per lot* \$1,900-2,800**Tenuta San Guido, Sassicaia 1988***Tuscany**Levels: bottom neck or better; mixed importers*379 8 bottles *per lot* \$2,000-2,800



**Screaming Eagle 2013**

*Napa Valley*

*Both lots in original wooden cases*

380	1 magnum	<i>per lot \$2,800-3,500</i>
381	3 bottles	<i>per lot \$3,800-5,500</i>

---

SCREAMING I

**Screaming Eagle 2009**

*Napa Valley*

*In original wooden case*

382 3 bottles per lot \$4,500-6,000

**Screaming Eagle 2008**

*Napa Valley*

*In original wooden case*

383 3 bottles per lot \$4,800-6,000

**Screaming Eagle 2007**

*Napa Valley*

*In original wooden case*

384 3 bottles per lot \$6,000-9,000



**LAFITE**

**Château Lafite-Rothschild 1961**

*Pauillac, 1er cru classé*

*Levels: one top shoulder, one upper shoulder, one bottom mid shoulder; nicked capsules, heavily bin soiled labels, one badly torn and partially missing with Château and vintage visible, two torn labels*

385 3 bottles per lot \$2,000-3,000

**Château Lafite-Rothschild 1985**

*Pauillac, 1er cru classé*

*Levels: bottom neck or better*

*In original wooden case, tissue wrapped prior to Specialist inspection*

386 12 bottles per lot \$4,800-7,500

**Château Lafite-Rothschild 1995**

*Pauillac, 1er cru classé*

*In original wooden case*

387 12 bottles per lot \$5,500-7,500

**Château Lafite-Rothschild 2001**

*Pauillac, 1er cru classé*

*In original wooden case, tissue wrapped prior to Specialist inspection*

388 12 bottles per lot \$5,500-7,500



## LATOUR

### Château Latour 1949

*Pauillac, 1er cru classé*

*Levels: upper shoulder; Château and vintage embossed short capsules reveal Château and vintage branded corks, one corroded capsule, heavily bin soiled labels, one faded label with vintage obscured, vintage confirmed on capsule and cork*

389 2 bottles *per lot* \$3,000–4,000

### Château Latour 1961

*Pauillac, 1er cru classé*

*Levels: one mid shoulder, one bottom mid shoulder; nicked and lightly corroded capsules, bin soiled labels, one torn label*

390 2 bottles *per lot* \$4,000–6,000

### Château Latour 1966

*Pauillac, 1er cru classé*

*Levels: upper shoulder; creased label corners, lightly bin soiled labels*

391 3 bottles *per lot* \$1,200–1,800

### Château Latour 1995

*Pauillac, 1er cru classé*

*In original wooden case*

392 12 bottles *per lot* \$4,500–6,500

### Château Latour 1996

*Pauillac, 1er cru classé*

*In original wooden case*

393 12 bottles *per lot* \$6,000–9,000



*The 1996 Chateau Latour is a very powerful wine, it is a big brawny wine that will continue to evolve for many years to come. It is slowly starting to open up and show us its true potential.*

—Per Holmberg, VP, Head of Department

### Château Latour 2000

*Pauillac, 1er cru classé*

*In original wooden case*

394 12 bottles *per lot* \$8,000–12,000

### Château Latour 2001

*Pauillac, 1er cru classé*

*In original wooden case*

395 12 bottles *per lot* \$3,800–5,500

### Château Latour 2003

*Pauillac, 1er cru classé*

*In original wooden case*

396 12 bottles *per lot* \$6,500–9,500

## MARGAUX

### Château Margaux 1996

*Margaux, 1er cru classé*

*In original wooden case*

397 12 bottles *per lot* \$5,500–7,500

### Château Margaux 2000

*Margaux, 1er cru classé*

398 6 bottles *per lot* \$3,500–5,000

399 No Lot



**Château Mouton-Rothschild 1973***Pauillac, 1er cru classé**Levels: six upper shoulder, two mid shoulder; lightly corroded capsules, lightly wrinkled labels*400 8 bottles *per lot \$1,600-2,000***Château Mouton-Rothschild 1982***Pauillac, 1er cru classé**Levels: bottom neck or better; nicked capsules, nicked and lightly bin soiled labels*401 6 bottles *per lot \$4,800-7,000***Château Mouton-Rothschild 1986***Pauillac, 1er cru classé**Levels: nine bottom neck, three top shoulder; four lightly corroded capsules**In original wooden case*402 12 bottles *per lot \$7,000-10,000***Château Mouton-Rothschild 1995***Pauillac, 1er cru classé**Levels: bottom neck or better**In original wooden case*403 12 bottles *per lot \$3,800-5,500***Château Mouton-Rothschild 2000***Pauillac, 1er cru classé**In original wooden case*404 12 bottles *per lot \$12,000-16,000***Château Mouton-Rothschild 2001***Pauillac, 1er cru classé**In original wooden case*405 12 bottles *per lot \$3,500-5,500***HAUT BRION**

Château Haut-Brion has been highly regarded for many centuries, being mentioned in Samuel Pepy's diary in 1663. In 1935 Haut-Brion was bought by the American banker, Clarence Dillon. His grand-daughter, Joan Dillon, is the President and her son, His Royal Highness Prince Robert of Luxembourg, the Vice President and Managing Director. In 1983 the Dillons acquired the next door property La Mission Haut-Brion. Haut-Brion is renowned for the classic Graves earthy and smoky character, combined with the opulent and approachable nature provided by the higher proportion of Merlot in comparison to the other Médoc First Growths.

**Château Haut-Brion 1961***Pessac (Graves), 1er cru classé**Levels: two 5.5cm, one 6.5cm; one with signs old seepage, one wine stained label, lightly bin soiled labels*406 3 bottles *per lot \$3,500-5,500***Château Haut-Brion 1982***Pessac (Graves), 1er cru classé**Levels: three 2.5cm, four 3.5cm; two with slight signs of old seepage, three wine stained labels, lightly bin soiled labels*407 7 bottles *per lot \$3,500-5,500***Château Haut-Brion 1989***Pessac (Graves), 1er cru classé**Levels: 2cm or better; wrinkled and lightly bin soiled labels*408 3 bottles *per lot \$3,500-4,500***Château Haut-Brion 2000***Pessac (Graves), 1er cru classé**In original wooden case*409 12 bottles *per lot \$6,000-9,000***Château Haut-Brion 2001***Pessac (Graves), 1er cru classé**In original wooden case*410 12 bottles *per lot \$3,000-4,500*

**LA MISSION HAUT BRION**

**Château La Mission-Haut-Brion 2000**

*Pessac (Graves), cru classé*

411 6 bottles *per lot* \$2,800-4,200

**PALMER**

**Château Palmer 1961**

*Cantenac (Margaux), 3ème cru classé*

*Levels: one upper shoulder, one upper mid shoulder; one heavily corroded capsule, one nicked and lightly corroded capsule, bin soiled labels, one label loose at corner, one label adhered by tape*

412 2 bottles *per lot* \$3,800-5,500

**Château Cheval-Blanc 2000**

*Saint-Emilion, 1er grand cru classé (A)*

*In original wooden case*

413 12 bottles *per lot* \$7,000-10,000



2000 Le Pin is an outstanding wine that has no comparison. Owning and tasting six bottles of this very rare wine is in and of itself an experience that only a few can replicate.

—Richard Young, Associate Specialist

**VERY RARE LE PIN**

**Le Pin 2000**

*Pomerol*

*In original wooden case*

414 6 bottles *per lot* \$14,000-20,000

**PETRUS**

**Pétrus 1973**

*Pomerol, cru exceptionnel*

*Levels: nine top shoulder, one upper shoulder; nicked and lightly oxidized capsules, three wine stained labels*

415 10 bottles *per lot* \$7,500-10,000

**Pétrus 1996**

*Pomerol, cru exceptionnel*

*In original wooden case*

416 12 bottles *per lot* \$15,000-20,000





MIS EN BOUTEILLE AU CHATEAU

BOUTEILLE CHATEAU

MIS EN BOUTEILLE AU CHATEAU

MIS EN BOUTEILLE AU CHATEAU

MIS EN BOUTEILLE AU CHATEAU

MIS EN BOUTEILLE AU CHATEAU

MIS EN BOUTEILLE AU CHATEAU

MIS EN BOUTEILLE AU CHATEAU

MIS EN BOUTEILLE AU CHATEAU

MIS EN BOUTEILLE AU CHATEAU

1964  
**PETRUS**  
POMEROL  
Grand Vin  
M<sup>re</sup> EDMOND LAFITE  
PROPRIETAIRE & PROPRIETAIRE  
MIS EN BOUTEILLES AU CHATEAU  
APPELLATION POMEROL CONTRÔLÉE  
EXCLUSIVELY IMPORTED BY  
ESQUIN IMPORTS  
San Francisco  
by WINEIMPORTS INC., San Francisco

1975  
**PETRUS**  
POMEROL  
Grand Vin  
M<sup>re</sup> P. LACOSTE  
PROPRIETAIRE & PROPRIETAIRE  
MIS EN BOUTEILLES AU CHATEAU  
APPELLATION POMEROL CONTRÔLÉE  
CALX RED WINE  
Produced and Bottled by CHATEAU & ESTATE WINES COMPANY  
NEW YORK, N.Y.  
Alcohol 12.5% Vol.  
24.7 FL. OZ.

1976  
**PETRUS**  
POMEROL  
Grand Vin  
M<sup>re</sup> P. LACOSTE  
PROPRIETAIRE & PROPRIETAIRE  
MIS EN BOUTEILLES AU CHATEAU  
APPELLATION POMEROL CONTRÔLÉE  
OF FRANCE 50% ALCOHOL  
Produced by CHATEAU & ESTATE WINES COMPANY  
BY VOLUME 730 ML (24.7 FL. OZ.)  
Dreyfus, Ashby & Co.

1978  
**PETRUS**  
POMEROL  
Grand Vin  
M<sup>re</sup> P. LACOSTE  
PROPRIETAIRE & PROPRIETAIRE  
MIS EN BOUTEILLES AU CHATEAU  
APPELLATION POMEROL CONTRÔLÉE  
En JEAN-PIERRE MOULLET  
FRANCE 50% ALCOHOL  
Produced by CHATEAU & ESTATE WINES COMPANY  
BY VOLUME 730 ML (24.7 FL. OZ.)  
Dreyfus, Ashby & Co.

1980  
**PETRUS**  
POMEROL  
Grand Vin  
M<sup>re</sup> P. LACOSTE  
PROPRIETAIRE & PROPRIETAIRE  
MIS EN BOUTEILLES AU CHATEAU  
APPELLATION POMEROL CONTRÔLÉE  
FRANCE 50% ALCOHOL  
Produced by CHATEAU & ESTATE WINES COMPANY  
BY VOLUME 730 ML (24.7 FL. OZ.)  
Dreyfus, Ashby & Co.

1982  
**PETRUS**  
POMEROL  
Grand Vin  
M<sup>re</sup> P. LACOSTE  
PROPRIETAIRE & PROPRIETAIRE  
MIS EN BOUTEILLES AU CHATEAU  
APPELLATION POMEROL CONTRÔLÉE  
FRANCE 50% ALCOHOL  
Produced by CHATEAU & ESTATE WINES COMPANY  
BY VOLUME 730 ML (24.7 FL. OZ.)  
Dreyfus, Ashby & Co.

1983  
**PETRUS**  
POMEROL  
Grand Vin  
M<sup>re</sup> P. LACOSTE  
PROPRIETAIRE & PROPRIETAIRE  
MIS EN BOUTEILLES AU CHATEAU  
APPELLATION POMEROL CONTRÔLÉE  
FRANCE 50% ALCOHOL  
Produced by CHATEAU & ESTATE WINES COMPANY  
BY VOLUME 730 ML (24.7 FL. OZ.)  
Dreyfus, Ashby & Co.

1985  
**PETRUS**  
POMEROL  
Grand Vin  
M<sup>re</sup> P. LACOSTE  
PROPRIETAIRE & PROPRIETAIRE  
MIS EN BOUTEILLES AU CHATEAU  
APPELLATION POMEROL CONTRÔLÉE  
FRANCE 50% ALCOHOL  
Produced by CHATEAU & ESTATE WINES COMPANY  
BY VOLUME 730 ML (24.7 FL. OZ.)  
Dreyfus, Ashby & Co.

1986  
**PETRUS**  
POMEROL  
Grand Vin  
M<sup>re</sup> P. LACOSTE  
PROPRIETAIRE & PROPRIETAIRE  
MIS EN BOUTEILLES AU CHATEAU  
APPELLATION POMEROL CONTRÔLÉE  
FRANCE 50% ALCOHOL  
Produced by CHATEAU & ESTATE WINES COMPANY  
BY VOLUME 730 ML (24.7 FL. OZ.)  
Dreyfus, Ashby & Co.

1987  
**PETRUS**  
POMEROL  
Grand Vin  
M<sup>re</sup> P. LACOSTE  
PROPRIETAIRE & PROPRIETAIRE  
MIS EN BOUTEILLES AU CHATEAU  
APPELLATION POMEROL CONTRÔLÉE  
FRANCE 50% ALCOHOL  
Produced by CHATEAU & ESTATE WINES COMPANY  
BY VOLUME 730 ML (24.7 FL. OZ.)  
Dreyfus, Ashby & Co.

1988  
**PETRUS**  
POMEROL  
Grand Vin  
M<sup>re</sup> P. LACOSTE  
PROPRIETAIRE & PROPRIETAIRE  
MIS EN BOUTEILLES AU CHATEAU  
APPELLATION POMEROL CONTRÔLÉE  
FRANCE 50% ALCOHOL  
Produced by CHATEAU & ESTATE WINES COMPANY  
BY VOLUME 730 ML (24.7 FL. OZ.)  
Dreyfus, Ashby & Co.

# PETRUS

## EXCEPTIONAL VERTICAL OF PETRUS

### Pétrus

*Pomerol, cru exceptionnel*

**1964**

*Level: upper shoulder; lightly scuffed capsule, lightly bin soiled and nicked label, overlapping import strip label* (1)

**1975**

*Level: upper shoulder; oxidized capsule, lightly corroded at top, bin soiled, nicked and wine stained label* (1)

**1976**

*Level: top shoulder; scuffed capsule, lightly bin soiled label* (1)

**1978**

*Level: top shoulder; nicked and lightly oxidized capsule, torn and bin soiled label* (1)

**1980**

*Level: bottom neck; lightly oxidized and nicked capsule, lightly bin soiled label* (1)

**1982**

*Level: bottom neck; lightly oxidized capsule, nicked and lightly wrinkled label* (1)

**1983**

*Level: bottom neck; oxidized capsule, lightly bin soiled label* (1)

**1985**

*Level: bottom neck; scuffed and lightly oxidized capsule, nicked at top, bin soiled and lightly torn label* (1)

**1986**

*Level: bottom neck; scuffed capsule, nicked label* (1)

**1987**

*Level: bottom neck; nicked capsule, scuffed, lightly wrinkled and slightly nicked label* (1)

**1988**

*Level: bottom neck; very slightly damp stained, wrinkled, and pen marked label* (1)

**1989**

*Level: bottom neck; lightly scuffed capsule, lightly nicked label* (1)

**1990**

*Level: bottom neck; lightly nicked label* (1)

**1992**

*Level: into neck; slight signs of old seepage, lightly nicked label* (1)

**1994**

*Level: into neck; torn label* (1)

**1995**

*Level: into neck; lightly nicked label* (1)

**1996**

*Level: very top shoulder; lightly nicked label* (1)

**1997**

(1)

**1999**

(1)

**2000**

(1)

**2001**

*Lightly bin soiled label* (1)

**2003**

*Label lightly creased at bottom left corner* (1)

**2005**

(1)

**2007**

(1)

**2008**

(1)

**2009**

(1)

**2010**

(1)

417 27 bottles

per lot \$30,000-40,000



1990 - MIS EN BOUTEILLE AU CHATEAU

1991 - MIS EN BOUTEILLE AU CHATEAU

1992 - MIS EN BOUTEILLE AU CHATEAU

1993 - MIS EN BOUTEILLE AU CHATEAU

1994 - MIS EN BOUTEILLE AU CHATEAU

1995 - MIS EN BOUTEILLE AU CHATEAU

1996 - MIS EN BOUTEILLE AU CHATEAU

1997 - MIS EN BOUTEILLE AU CHATEAU

1998 - MIS EN BOUTEILLE AU CHATEAU

1999 - MIS EN BOUTEILLE AU CHATEAU

2000 - MIS EN BOUTEILLE AU CHATEAU

2001 - MIS EN BOUTEILLE AU CHATEAU

2002 - MIS EN BOUTEILLE AU CHATEAU

2003 - MIS EN BOUTEILLE AU CHATEAU

2004 - MIS EN BOUTEILLE AU CHATEAU

2005 - MIS EN BOUTEILLE AU CHATEAU

2006 - MIS EN BOUTEILLE AU CHATEAU

2007 - MIS EN BOUTEILLE AU CHATEAU

2008 - MIS EN BOUTEILLE AU CHATEAU

2009 - MIS EN BOUTEILLE AU CHATEAU

2010 - MIS EN BOUTEILLE AU CHATEAU

**19TH CENTURY LAFITE****Château Lafite-Rothschild 1887***Pauillac, 1er cru classé**Level: top shoulder; "rebouchage fait par le maître de chai du Château en 1987," modern capsule, Lafite 1887 neck button on glass shoulder, bin soiled label with "Etiquette de Rebouchage" stamp on lower left corner*

418 1 bottle per lot \$800-1,000

**Château Lafite-Rothschild 1924***Pauillac, 1er cru classé**Level: upper shoulder; short, scuffed Château embossed capsule revealing Château embossed cork, lightly bin soiled and torn label*

419 1 bottle per lot \$700-1,000

**Château Lafite-Rothschild***Pauillac, 1er cru classé***1985** (1)**1986** (1)*Lightly scuffed capsule* (1)**1988** (1)**1989** (1)**1990** (1)*Nicked label* (1)**1997** (1)**1999** (1)**2001** (1)*Lightly scuffed label* (1)**2003** (1)*Above levels: into neck*

420 9 bottles per lot \$3,000-4,500

**Château Haut-Brion 1959***Pessac (Graves), 1er cru classé**Level: 4.5cm; heavily corroded and slightly depressed capsule, bin soiled, nicked, and damp stained label*

421 1 bottle per lot \$700-1,000

**Château Haut-Brion 1985***Pessac (Graves), 1er cru classé**Levels: 2.5cm or better**In original wooden case*

422 12 bottles per lot \$4,000-6,000

**LAFITE 1982****Château Lafite-Rothschild 1982***Pauillac, 1er cru classé**Level: bottom neck; capsule previously cut revealing Château branded cork, loose, torn, damp stained, and bin soiled label*

Δ423 1 double-magnum per lot \$5,000-7,500

**Château Haut-Brion 1990***Pessac (Graves), 1er cru classé**Level: 2.0cm; lightly bin soiled label*

424 1 magnum per lot \$1,400-1,900

**Château d'Yquem 1988***Sauternes, 1er grand cru classé**Levels: six bottom neck, six top shoulder; lightly crowned capsules, one slight signs of old seepage**In original wooden case*

425 12 bottles per lot \$2,800-4,800

**Château Raymond-Lafon 1983***Sauternes**Levels: top shoulder, lightly bin soiled labels*

426 23 half-bottles per lot \$450-650

**A RARE MAGNUM OF MOUTON 1953****Château Mouton-Rothschild 1953***Pauillac, 1er cru classé**Level: mid-upper shoulder; nicked capsule, bin soiled, damp stained and nicked label, 'Etablissements Nicholas' stamp.**Majestic Wines & Spirits slip label slightly overlapping label at front*

427 1 magnum per lot \$1,800-2,400

**LAFITE****Château Lafite-Rothschild 1990***Pauillac, 1er cru classé**Level: into neck; bin soiled and torn label*

428 1 double magnum per lot \$1,900-2,800

**Château Haut-Brion 1961***Pessac (Graves), 1er cru classé**Levels: one 2.5cm, two 4cm, four 4.5cm, one 5cm; one lightly depressed and torn capsule, seven lightly corroded capsules with slight signs of old seepage, one wine stained and heavily bin soiled label, bin soiled and lightly torn labels*

429 8 bottles per lot \$6,000-8,000

**Château Haut-Brion 1998***Pessac (Graves), 1er cru classé*

430 1 double magnum per lot \$2,400-3,200

**Château Haut-Brion 2001***Pessac (Graves), 1er cru classé**Bin soiled and nicked labels, mixed importers*

431 12 bottles per lot \$3,000-5,000

**Château Trotanoy 2004**  
*Pomerol*  
*Nicked labels*  
 432 12 bottles *per lot \$1,200-1,800*

**Jaboulet, Hermitage La Chapelle 1999**  
*Rhône*  
*Rubbed labels, one torn*  
 433 6 bottles *per lot \$900-1,300*

**Dominique Mugneret, Echézeaux, en Orveaux 2010**  
*Grand Cru, Côte de Nuits*  
*In original carton*  
 434 12 bottles *per lot \$2,000-3,000*

**Robert Groffier, Bonnes-Mares 2011**  
*Grand Cru, Côte de Nuits*  
 435 3 bottles *per lot \$600-800*

**Robert Groffier, Chambolle Musigny Les Amoureuses 2011**  
*1er Cru, Côte de Nuits*  
 436 3 bottles *per lot \$600-800*

**A.-F. Gros, Chambolle-Musigny 2007**  
*Côte de Nuits*  
*In original carton*  
 437 12 bottles *per lot \$500-700*

**Latour, Corton-Charlemagne 2005**  
*Côte de Beaune*  
*In original wooden case*  
 438 12 bottles *per lot \$1,000-1,500*

**M. Colin, Corton-Charlemagne 2005**  
*Grand Cru, Côte de Beaune*  
 439 12 bottles *per lot \$1,500-2,000*

**M. Colin, Corton-Charlemagne 2005**  
*Grand Cru, Côte de Beaune*  
 440 12 bottles *per lot \$1,500-2,000*

**Drouhin, Marquis de Laguiche, Montrachet 2009**  
*Grand Cru, Côte de Beaune*  
*In original wooden case*  
 441 12 bottles *per lot \$6,000-7,000*

**Château Ducru-Beaucaillou 2009**  
*Saint-Julien, 2ème cru classé*  
 442 12 bottles *per lot \$2,800-3,500*

**Château Brane-Cantenac 2004**  
*Cantenac (Margaux), 2ème cru classé*  
*Parcel: lots 443-444*  
 443 12 bottles *per lot \$500-700*  
 444 12 „

**Le Clarence de Haut-Brion 2008**  
*Pessac-Léognan*  
*In original wooden case*  
 445 12 bottles *per lot \$1,000-1,500*

**Château La Dominique 1990**  
*Levels: into neck (2)*  
**Château La Lagune 2003** (2)  
**Château Angelus 1996** (2)  
**Château Pavie 2002** (2)  
**Château La Fleur-Pétrus 1995** (1)  
 446 9 bottles *per lot \$1,200-1,700*

**Pegau, Châteauneuf-du-Pape, Cuvée Laurence 1998**  
*Rhône*  
 447 4 bottles *per lot \$400-500*

**Château Lynch-Bages 2002**  
*Pauillac, 5ème cru classé*  
*In original wooden case*  
 448 6 magnums *per lot \$850-1,200*

**Château Mouton-Rothschild 1937**  
*Pauillac, 1er cru classé*  
*Level: upper shoulder; wrinkled, Château embossed capsule, heavily bin soiled, torn and partially missing label, Château and vintage visible, bottle no: 002376, selected and shipped by Avery's of Bristol, imported by Charles L. Richardson and Co Inc.*  
 449 1 double magnum *per lot \$3,500-4,800*



	<b>Dom Pérignon, Rosé 2002</b>	(3)	
	<b>Dom Pérignon</b>		
	<b>2002</b>	(1)	
	<b>2004</b>	(4)	
450	8 bottles		<i>per lot</i> \$1,200-1,700
	<b>Bollinger, La Grande Année Rosé 2004</b>	(3)	
	<b>Bollinger R.D.</b>		
	<b>2002</b>		magnum (1)
	<b>2002</b>	(4)	
451	1 magnum and 7 bottles		<i>per lot</i> \$1,000-1,400
	<b>Salon, Le Mesnil</b>		
	<i>Le Mesnil-Sur-Oger</i>		
	<b>1996</b>	(1)	
	<b>1999</b>	(3)	
	<b>2002</b>	(2)	
452	6 bottles		<i>per lot</i> \$1,400-1,800
	<b>Charles Heidsieck, Blanc des Millénaires 1995</b>	(4)	
	<b>Chartogne-Taillet, Orizeaux, Extra Brut 2009</b>	(2)	
	<b>Larmandier-Bernier, Terre de Vertus, Blanc de Blancs 2009</b>	(6)	
453	12 bottles		<i>per lot</i> \$650-950
	<b>Jacques Selosse, Initiale Brut</b>	(3)	
	<b>Jacquesson, Cuvée No. 736</b>	(6)	
	<b>Krug, Grande Cuvée</b>	(1)	
454	10 bottles		<i>per lot</i> \$750-900
	<b>Philipponnat, Clos des Goisses 2000</b>	(3)	
	<b>Billecart-Salmon, Cuvée Elisabeth Salmon 2002</b>	(1)	
	<b>Pierre Gimmonnet, Cuvée Gastronom 2009</b>	(1)	
	<b>Pierre Peters, Brut Millésime 2008</b>	(2)	
	<b>Pierre Peters, Les Chétillons, Blanc de Blancs 2006</b>	(1)	
455	8 bottles		<i>per lot</i> \$650-850
	<b>Etienne Sauzet, Montrachet</b>		
	<i>Grand Cru, Côte de Beaune</i>		
	<b>2007</b>	(1)	
	<b>2009</b>	(2)	
	<b>2011</b>	(1)	
456	4 bottles		<i>per lot</i> \$1,200-1,600

## DOMAINE LEFLAIVE

Domaine Leflaive is the very summit of white Burgundy, producing outstanding wines that have the capacity to be very long-lived and develop richness, depth, and complexity with bottle-age. The Domaine owns and tends almost 25 hectares of vineyards mainly located in and around Puligny-Montrachet. Their holdings include 0.08 hectares of Le Montrachet, 2 hectares of Chevalier-Montrachet, 1.91 hectares of Bâtard-Montrachet, 1.6 hectares of Bienvenues-Bâtard-Montrachet, and Puligny-Montrachet 1er Crus; Le Clavoillon, Les Combettes, Les Folatières, and Les Pucelles. Domaine Leflaive has been totally biodynamic since 1997. These are some of the most highly sought-after white wines in the world.

### Domaine Leflaive, Bâtard-Montrachet 2012

*Grand Cru, Côte de Beaune*

457 4 bottles *per lot* \$1,400-1,800

### Domaine Leflaive, Bâtard-Montrachet 2004

*Grand Cru, Côte de Beaune*

458 3 bottles *per lot* \$850-1,100

### Domaine Leflaive, Bâtard-Montrachet

*Grand Cru, Côte de Beaune*

**1996** (1)

**2009** magnum (1)

**2010** (2)

459 1 magnum and 3 bottles *per lot* \$1,500-2,000

### Domaine Leflaive, Bienvenues-Bâtard-Montrachet

**1995** (1)

**2010** (2)

**2012** (2)

**Faiveley, Bienvenues-Bâtard-Montrachet 2011** (2)

### Domaine Leflaive, Chevalier Montrachet

**2008** (1)

**2010** (2)

460 10 bottles *per lot* \$2,600-3,500

### Vincent Morey, Bâtard-Montrachet 2007

**Vincent Girardin, Chevalier-Montrachet 2009** (2)

magnum (1)

### Etienne Sauzet, Chevalier-Montrachet

**2010** magnum (1)

**2010** (1)

461 2 magnums and 3 bottles *per lot* \$1,000-1,400

### Louis Jadot, Corton-Charlemagne 2010

*Grand Cru, Côte de Beaune*

462 10 bottles *per lot* \$800-1,100

### Bonneau du Martray, Corton-Charlemagne

**1996** (1)

**2004** (2)

**2007** (1)

**Bouchard Père et Fils, Corton-Charlemagne 2010** (3)

### Louis Jadot, Corton-Charlemagne

**2010** (1)

**2012** (1)

**Georges Roumier, Corton-Charlemagne 2005** (1)

463 10 bottles *per lot* \$1,000-1,400

	<b>Coche-Dury, Meursault, Les Perrières 2009</b> <i>1er Cru, Côte de Beaune</i>		
464	1 bottle	<i>per lot</i>	\$1,000-1,400
	<b>Coche-Dury, Meursault, Les Genevrières</b>		
	2006		(1)
	2009		(1)
	Coche-Dury, Meursault 2011		(1)
	Coche-Dury, Puligny-Montrachet, Les Enseignères		
	2011		(1)
	Coche-Dury, Auxey-Duresses, Blanc 2012		(1)
465	5 bottles	<i>per lot</i>	\$1,500-1,900
	<b>Domaine Leflaive, Puligny-Montrachet</b>		
	Les Pucelles 2010		(6)
	<b>Domaine Leflaive, Puligny-Montrachet</b>		
	Les Folatières		
	2009		(2)
	2010		(4)
466	12 bottles	<i>per lot</i>	\$1,800-2,400
	<b>Domaine Leflaive, Puligny-Montrachet</b>		
	Les Pucelles		
	2009		(3)
	2012		(2)
	<b>Domaine Leflaive, Puligny-Montrachet</b>		
	Les Combettes 2012		(2)
467	7 bottles	<i>per lot</i>	\$1,000-1,400
	<b>Vincent Girardin, Puligny-Montrachet 2010</b>		(1)
	<b>Vincent Girardin, Puligny-Montrachet, Les Pucelles</b>		
	2010		(3)
	<b>Joseph Drouhin, Puligny-Montrachet, Les Folatières</b>		
	2011		(6)
	<b>Lucien Le Moine, Puligny-Montrachet</b>		
	Les Folatières 2010		(1)
	<b>Maison Leroy, Puligny-Montrachet, Sous le Puits</b>		
	2011		(1)
468	12 bottles	<i>per lot</i>	\$1,000-1,400
	<b>Domaine des Comtes Lafon, Meursault-Charmes</b>		
	2009		
	<i>1er Cru, Côte de Beaune</i>		
469	6 bottles	<i>per lot</i>	\$750-1,000
	<b>Domaine des Comtes Lafon, Meursault</b>		
	Les Genevrières 2012		(7)
	<b>Domaine des Comtes Lafon, Meursault</b>		
	Clos de la Barre 2012		(1)
	<b>Domaine des Comtes Lafon, Meursault</b>		
	Les Narvaux 2010		(2)
470	10 bottles	<i>per lot</i>	\$1,000-1,400
	<b>Francois Mikulski, Meursault, Charmes 2007</b>		(2)
	<b>Francois Mikulski, Meursault, Genevrières 2010</b>		(5)
	<b>Francois Mikulski, Meursault, Goutte d'Or 2011</b>		(2)
	<b>Francois Mikulski, Meursault, Les Perrieres 2011</b>		(2)
	<b>Francois Mikulski, Meursault, Les Poruzots 2011</b>		(1)
471	12 bottles	<i>per lot</i>	\$500-700

	<b>Vincent Girardin, Meursault, Les Genevrières 2010</b>		
			(3)
	<b>Vincent Girardin, Meursault, Les Perrières 2006</b>		(3)
	<b>Vincent Girardin, Meursault, Les Perrières 2010</b>		(2)
	<b>A. Grivault, Meursault, Clos des Perrières 2009</b>		(1)
	<b>Maison Leroy, Meursault Blagny 2011</b>		(2)
	<b>Domaine Leflaive, Meursault, Sous Le Dos D'Ane</b>		
	2012		(2)
	<b>Domaine Henri Boillot, Meursault, Les Genevrières</b>		
	2010		(4)
	<b>Maison Leroy, Meursault 1996</b>		(1)
472	18 bottles	<i>per lot</i>	\$1,400-1,800
	<b>Joseph Drouhin, Meursault, Les Perrières 2010</b>		
	<i>1er Cru, Côte de Beaune</i>		
473	6 bottles	<i>per lot</i>	\$600-900
	<b>Vincent Girardin, Chassagne-Montrachet, Clos du</b>		
	Cailleret 2010		(3)
	<b>Morey Coffinet, Chassagne-Montrachet, Les</b>		
	Caillerets 2010		(3)
	<b>Bouchard Père et Fils, Meursault, Les Genevrières</b>		
	2010		(3)
	<b>Latour-Giraud, Meursault, Les Genevrières 2010</b>		(3)
474	12 bottles	<i>per lot</i>	\$500-650
	<b>François Ravenau, Chablis, Montée de Tonnerre</b>		
	2009		(2)
	2011		(2)
	<b>François Ravenau, Chablis, Vaillons 2010</b>		(2)
	<b>William Fèvre, Chablis, Fourchaume 2009</b>		(6)
475	12 bottles	<i>per lot</i>	\$750-1,000
	<b>Joseph Drouhin, Chambertin-Clos de Bèze 2010</b>		(1)
	<b>Tortochot, Chambertin 2012</b>		(1)
	<b>Tortochot, Mazis-Chambertin 2012</b>		(2)
	<b>Ponsot, Chapelle-Chambertin 1996</b>		(1)
	<b>Armand Rousseau, Clos de la Roche 2005</b>		(1)
476	6 bottles	<i>per lot</i>	\$850-1,100
	<b>Domaine Leroy, Clos Vougeot 2007</b>		(1)
	<b>Tortochot, Clos Vougeot 2012</b>		(2)
	<b>Château de la Tour, Clos Vougeot Vieilles Vignes</b>		
	2012		(2)
477	5 bottles	<i>per lot</i>	\$900-1,200
	<b>Domaine de la Romanée-Conti</b>		
	<b>Romanée-St.-Vivant</b>		
	1996		(1)
	2004		(1)
	<b>Robert Arnoux, Romanée-St.-Vivant 2006</b>		(1)
	<b>Jayer-Gilles, Echezeaux-du-Dessus</b>		
	2007		(1)
	2009		(1)
	<b>Mongeard-Mugneret, Echezeaux, Vieilles Vignes</b>		
	1989		(1)
478	6 bottles	<i>per lot</i>	\$2,000-2,800

	<b>Roumier, Chambolle-Musigny</b>		
	1995	(1)	
	2009	(2)	
	<b>Roumier, Chambolle-Musigny, Les Combottes 2010</b>	(1)	
		(2)	
	<b>Hervé Roumier, Chambolle-Musigny 2009</b>	(2)	
	<b>Domaine Ponsot, Chambolle-Musigny</b>		
	<b>Les Charmes 1996</b>	(1)	
	<b>François Bertheau, Chambolle-Musigny</b>		
	<b>Les Charmes 2007</b>	(1)	
479	8 bottles		<i>per lot \$650-850</i>
	<b>Faiveley, Gevrey-Chambertin, Les Cazetiers 2005</b>	(1)	
	<b>Domaine Leroy, Pommard, Les Vignots 2005</b>	(1)	
	<b>Domaine des Comtes Lafon, Volnay-Clos des Chênes 2005</b>	(1)	
	<b>Lucien le Moine, Nuis-St.-Georges, Les Vaucrains 2008</b>	(1)	
	<b>Coche-Dury, Pommard, Les Vaumuriens 2008</b>	(1)	
	<b>Domaine de la Pousse d'Or, Volnay, Clos de la Bousse d'Or 2008</b>	(3)	
	<b>Denis Mortet, Gevrey-Chambertin Vieilles Vignes 2009</b>	(1)	
	<b>Roumier, Morey-Saint-Denis, Clos de la Bussière 2009</b>	(3)	
	2010	(2)	
	<b>Sylvian Cathiard, Vosne-Romanée, Les Suchots 2009</b>	(2)	
	<b>Comte Armand, Pommard, Clos-des-Epeneaux 2010</b>	(2)	
	<b>Arnoux Lachaux, Vosne-Romanée, Les Chaumes 2010</b>	(1)	
	<b>Denis Mortet, Gevrey-Chambertin Vieilles Vignes 2011</b>	(1)	
480	20 bottles		<i>per lot \$1,800-2,200</i>
	<b>Château Pape-Clement Blanc 2009</b>		
	<i>Pessac (Graves)</i>		
481	4 bottles		<i>per lot \$700-900</i>
	<b>Château La Mission Haut-Brion 2012</b>		
	<i>Pessac (Graves), cru classé</i>		
	<i>In original wooden case</i>		
482	12 bottles		<i>per lot \$2,000-3,000</i>
	<b>Château Lafite-Rothschild</b>		
	<i>Pauillac, 1er cru classé</i>		
	<b>1991</b>	(1)	
	<b>1998</b>	(1)	
	<b>2011</b>	(1)	
483	3 bottles		<i>per lot \$900-1,200</i>
	<b>Château Latour</b>		
	<i>Pauillac, 1er cru classé</i>		
	<b>2003</b>	(1)	
	<b>2005</b>	(2)	
484	3 bottles		<i>per lot \$1,500-2,000</i>

	<b>Château Margaux</b>		
	<i>Margaux, 1er cru classé</i>		
	<b>2009</b>	(1)	
	<b>2010</b>	(1)	
485	2 bottles		<i>per lot \$1,000-1,500</i>
	<b>Château Haut-Brion 1990</b>	(1)	
	<b>Château Mouton-Rothschild 1989</b>	(1)	
	<b>2005</b>	(1)	
			<i>magnum (1)</i>
486	1 magnum and 2 bottles		<i>per lot \$1,400-1,800</i>
	<b>Château Léoville-Poyferré 2009</b>		
	<i>Saint-Julien, 2ème cru classé</i>		
487	11 bottles		<i>per lot \$1,300-1,700</i>
	<b>Château La Mission-Haut-Brion 1990</b>	(1)	
	<b>Château Pichon-Longueville, Baron 1994</b>	(1)	
	<b>Château Angelus 1995</b>	(1)	
	<b>Château Pichon-Longueville, Comtesse de Lalande 1996</b>	(1)	
	<b>Château Ausone 2003</b>	(1)	
488	5 bottles		<i>per lot \$1,300-1,700</i>
	<b>Château Pontet-Canet 2010</b>		
	<i>Pauillac, 5ème cru classé</i>		
489	12 bottles		<i>per lot \$1,500-2,000</i>
	<b>Château Malescot-Saint-Exupéry 2009</b>		
	<i>Margaux, 3ème cru classé</i>		
490	10 bottles		<i>per lot \$600-900</i>
	<b>Château Trotanoy 2010</b>		
	<i>Pomerol</i>		
491	6 bottles		<i>per lot \$900-1,200</i>
	<b>Château Clinet 2010</b>		
	<i>Pomerol</i>		
492	12 bottles		<i>per lot \$1,200-1,800</i>
	<b>Château Clinet 2009</b>		
	<i>Pomerol</i>		
493	12 bottles		<i>per lot \$2,400-3,200</i>
	<b>Château d'Yquem 2001</b>		
	<i>Sauternes, 1er grand cru classé</i>		
494	1 magnum		<i>per lot \$1,000-1,400</i>
	<b>Château d'Yquem 2011</b>		
	<i>Sauternes, 1er grand cru classé</i>		
495	6 half bottles		<i>per lot \$750-1,000</i>

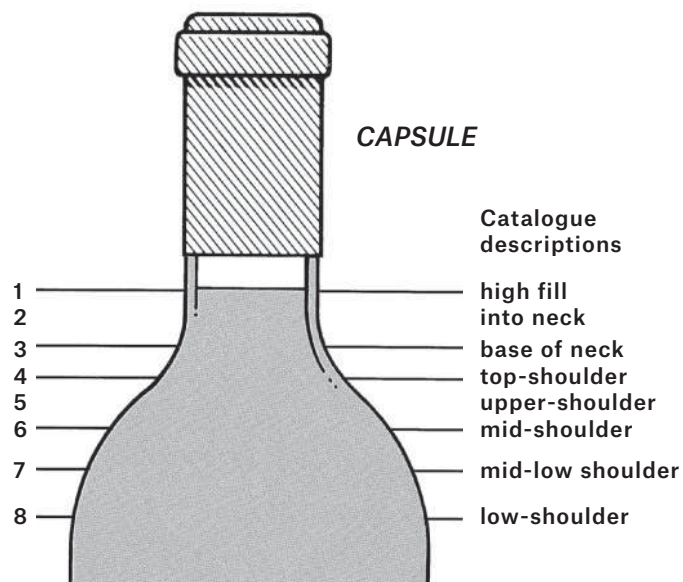




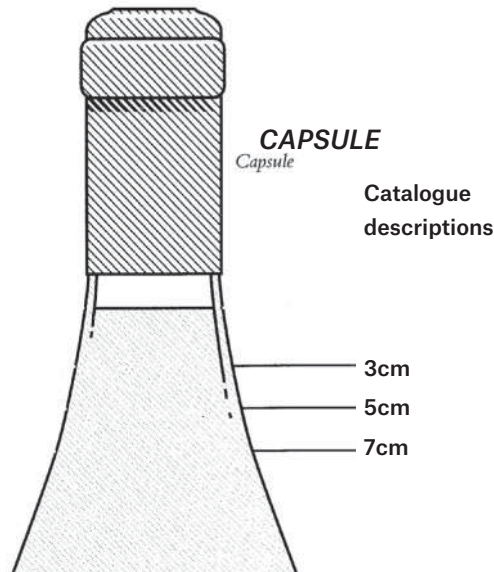
# LEVEL/ULLAGE DESCRIPTIONS AND INTERPRETATIONS

(see notes below)

## BORDEAUX



## BURGUNDY



- 1 into neck: Level of young wines. Exceptionally good in wines over 10 years old.
- 2 bottom neck: Perfectly good for any age of wine. Outstandingly good for a wine of 20 years in bottle, or longer.
- 3 very top-shoulder
- 4 top-shoulder: Normal for any claret 15 years old or older.
- 5 upper-shoulder: Slight natural reduction through the easing of the cork and evaporation through cork and capsule. Usually no problem. Acceptable for any wine over 20 years old. Exceptional for pre-1950 wines.

- 6 mid-shoulder: Probably some weakening of the cork and some risk. Not abnormal for wines 30/40 years of age. Estimates usually take this into account.
- 7 mid-low-shoulder: Some risk. Low estimates.
- 8 low-shoulder: Risky and usually only accepted for sale if wine or label exceptionally rare or interesting. Always offered with low estimate.

Because of the slope of shoulder it is impractical to describe levels as mid-shoulder, etc. Wherever appropriate the level between cork and wine will be measured and catalogued in centimetres.

The condition and drinkability of burgundy is less affected by ullage than its equivalent from Bordeaux. For example, a 5 to 7 cm. ullage in a 30-year-old burgundy can be considered normal, indeed good for age, 3.5 to 4 cm. excellent for age, even 7cm. rarely a risk.

### BOTTLE SIZES

- magnum = two regular bottles
- marie-jeanne = three regular bottles
- double-magnum = four regular bottles
- jeroboam = four regular bottles (Burgundy, Champagne)
- jeroboam = six regular bottles (Bordeaux) (or 5 litres)
- impériale = eight regular bottles (Bordeaux)
- methuselah = eight regular bottles (Burgundy)

### SPECIAL NOTICE

Though every effort is made to describe or measure the levels of older vintages, corks over twenty years old begin to lose their elasticity and levels can change between cataloguing and sale. Old corks have also been known to fail during or after shipment.

**We therefore repeat that there is always a risk of cork failure with old wines and due allowance must be made for this.**

**Under no circumstances can an adjustment of price or credit be made after delivery except under the terms stated in Paragraph 5 of the Conditions of Sale.**

**Unless otherwise stated, Bordeaux are château bottled and all wines are bottled in the country of production.**

**Important note regarding opening of cases and listing of levels: Christie's general policy is to open all wood cases and to describe levels. Bidders must make allowances for reasonable variations in ullage which may be encountered in cases older than twenty years. Additionally all wine younger than twenty years have levels bottom neck/2.5cm or better unless otherwise noted.**

# BUYING AT CHRISTIE'S

## CONDITIONS OF SALE

Bidders are strongly encouraged to read the Conditions of Sale contained in this catalogue that state the terms governing the purchase of all property sold at auction and the conditions upon which Christie's guarantees the authenticity of property offered for sale.

## ESTIMATES

Catalogue entries include descriptions for every lot and a price range that is our specialists' opinion of the price expected at auction. Estimates are based upon prices recently paid at auction for comparable property and take into account condition, rarity, quality and provenance (history of previous ownership). Estimates are prepared well in advance of the sale and are subject to revision. Buyers should not rely upon estimates as a representation or prediction of actual selling prices. Estimates do not include the buyer's premium or sales tax. Where "Estimate on Request" appears, please contact the Specialist Department for further information.

## RESERVES

Unless otherwise indicated, all lots in this catalogue are offered subject to a reserve. The reserve is the confidential minimum price the consignor will accept and below which a lot will not be sold. The reserve will not exceed the low pre-sale estimate. Lots that are not subject to a reserve are identified by the symbol • next to the lot number.

## BUYER'S PREMIUM FOR WINE

Christie's charges a premium to the buyer on the final bid price of each lot of wine sold at the following rates:

22.5% of the final bid price of each lot.

For all lots, taxes are payable on the premium at the applicable rate.

## PRE-AUCTION VIEWING

Pre-auction viewings are open to the public and free of charge. Christie's specialists are available to give advice at viewings or by appointment. We encourage prospective buyers to examine lots thoroughly and to request condition reports. Exceptions: Wine: All viewings are by appointment only. To make arrangements please contact the Wine Department

## BIDDER REGISTRATION

Prospective buyers should register for a numbered bidding paddle at least 30 minutes before the sale. New clients, or those who have not made a recent purchase at Christie's, will be asked to supply a bank reference to register.

To avoid any delay in the release of purchases, please pre-arrange check or credit approval through Christie's Credit Department at +1 212 636 2490 or by fax at +1 212 636 4943.

## BIDDING

The auctioneer accepts bids from those present in the saleroom, from telephone bidders or by absentee written bids left with Christie's in advance of the auction. The auctioneer may also execute bids on behalf of the consignor up to the amount of the reserve, either by placing consecutive bids or by entering bids in response to saleroom, telephone, and/or absentee bids. The auctioneer will not specifically identify bids placed on behalf of the consignor. Under no circumstances will the auctioneer place any bid on behalf of the consignor at or above the reserve. Please note New York State law requires that buyers of alcoholic beverages must be at least 21 years of age.

## ABSENTEE BIDS

Absentee bids are written instructions from prospective buyers directing Christie's to bid on their behalf up to a maximum amount specified for

each lot. Christie's staff will attempt to execute an absentee bid at the lowest possible price taking into account the reserve price and other bids. If identical bids are received from two or more parties, the first bid received by Christie's will take priority. Absentee bids submitted on "no reserve" lots will, in the absence of a higher bid, be executed at approximately 50% of the low pre sale estimate or at the amount of the bid if it is less than 50% of the low pre-sale estimate. The auctioneer may execute absentee bids directly from the rostrum, clearly identifying these as "absentee bids," "book bids," "order bids" or "commission bids." Absentee Bids Forms are available in this catalogue, at any Christie's location or on [www.christies.com](http://www.christies.com).

## TELEPHONE BIDS

Telephone bids will be accepted for lots with low-end estimates of \$1,500 and above, no later than 24 hours prior to the sale and only if the capacity of our pool of staff phone bidders allows. Arrangements to bid in languages other than English must be made well in advance of the sale date.

Telephone bids may be recorded. By bidding on the telephone, prospective purchasers consent to the recording of their conversations.

Christie's offers all absentee and telephone bidding services as a convenience to our clients, but will not be responsible for errors or failures to execute bids.

## BIDDING INCREMENTS

Bidding generally opens below the low estimate and advances in increments of up to 10%, subject to the auctioneer's discretion.

Absentee bids that do not conform to the increments set below may be lowered to the next bidding interval.

\$50 to \$1,000	by \$50s
\$1,000 to \$2,000	by \$100s
\$2,000 to \$3,000	by \$200s
\$3,000 to \$5,000	by \$200, \$500, \$800

(ie: \$4,200, \$4,500, \$4,800)

\$5,000 to \$10,000	by \$500s
\$10,000 to \$20,000	by \$1,000s
\$20,000 to \$30,000	by \$2,000s
\$30,000 to \$50,000	by \$2,000, \$5,000, \$8,000

(ie: \$32,000, \$35,000, \$38,000)

\$50,000 to \$100,000	by \$5,000s
\$100,000 to \$200,000	by \$10,000s
above \$200,000	at the auctioneer's discretion

The auctioneer may vary the increments during the course of the auction at his or her own discretion.

## SUCCESSFUL BIDS

The fall of the auctioneer's hammer indicates the final bid, at which time the buyer assumes full responsibility for the lot. The results of absentee bids will be sent by mail after the auction. Successful bidders will pay the price of the final bid plus premium plus any applicable taxes.

## AUCTION RESULTS

To obtain spoken results for specific lots or faxed results for an entire auction, please call +1 212 703 8080.

## PAYMENT

Buyers are expected to make payment for purchases immediately after the auction. To avoid delivery delays, prospective buyers are encouraged to supply bank or other suitable references before the auction. Please note that Christie's will not accept payments for purchased Lots from any party other than the registered buyer.

Lots purchased in New York may be paid for in the following ways: **wire transfer, credit card** (up to \$50,000), **bank checks, checks and cash,**

**money orders or travellers checks** (up to \$7,500 combined total, subject to conditions)

**Wire transfer:** JPMorgan Chase Bank, N.A. 270 Park Avenue New York, NY 10017 ABA# 021000021 FBO: Christie's Inc. Account # 957-107978, for international transfers, SWIFT: CHASUS33.

**Credit cards:** Visa, MasterCard, American Express and China UnionPay a limit of \$50,000 for credit card payment will apply. This limit is inclusive of the buyer's premium and any applicable taxes. Credit card payments at the NY sale site will only be accepted for NY sales. Christie's will not accept credit card payments for purchases in any other sale site. The fax number to send completed CNP (Card Member not Present) authorization forms to is +1 212 636 4939. Alternatively, clients can mail the authorization form to the address below.

**Cash, Money Orders or Travellers Checks** is limited to \$7,500 (subject to conditions).

**Bank Checks** should be made payable to Christie's (subject to conditions).

**Checks** should be made payable to Christie's. Checks must be drawn on a US bank and payable in US dollars. In order to process your payment efficiently, please quote sale number, invoice number and client number with all transactions.

**All mailed payments should be sent to:**

Christie's Inc. Cashiers' Department, 20 Rockefeller Center, New York, NY 10020. Please direct all inquiries to the Cashiers' Office Tel: +1 212-636-2495 Fax +1 212-636-4939 Please note that Christie's will not accept payments for purchased Lots from any party other than the buyer, unless otherwise agreed between the buyer and Christie's prior to the sale.

## SALES TAX

Purchases picked up in New York or delivered to locations in California, District of Columbia, Florida, Illinois, New York, Pennsylvania, Rhode Island or Texas may be subject to sales or compensating use tax of such jurisdictions. It is the buyer's responsibility to ascertain and pay all taxes due. Buyers claiming exemption from sales tax must have the appropriate documentation on file with Christie's prior to the release of the property. For more information, please contact Purchaser Payments at +1 212 636 2496.

## COLLECTION OF PURCHASED LOTS

Buyers are expected to remove their property within 7 calendar days of the auction. Please refer to the section on Collection and Delivery of Wine at the back of the catalogue for collection information for purchased lots.

## SHIPPING

A Christie's and Columbus Circle Wines and Spirits Collection and Delivery Form is enclosed with each invoice. It is the buyer's responsibility to pick up purchases or make all shipping arrangements. After payment has been made in full, Christie's and Columbus Circle Wines and Spirits, can arrange property packing and shipping at the buyer's request and expense.

## EXPORT/IMPORT PERMITS

Property sold at auction may be subject to laws governing export from the US and import restrictions of foreign countries. Buyers should always check whether an export license is required before exporting. It is the buyer's sole responsibility to obtain any relevant export or import license. The denial of any license or any delay in obtaining licenses shall neither justify the rescission of any sale nor any delay in making full payment for the lot. Local laws may prohibit the import of some property and/or may prohibit the resale of some property in the country of importation, no such restriction shall justify the rescission of any sale or delay in making full payment for the lot.

# CONDITIONS OF SALE FOR WINE

These Conditions of Sale and the Important Notices and Explanation of Cataloguing Practice contain all the terms on which Christie's, Columbus Circle Wines and Spirits and the seller contract with the buyer. They may be amended by posted notices or oral announcements made during the sale. By bidding at auction you agree to be bound by these terms.

## 1. CHRISTIE'S AND COLUMBUS CIRCLE WINES AND SPIRITS AS AGENT

Except as otherwise stated Christie's and Columbus Circle Wines and Spirits acts as agent for the seller. The contract for the sale of the property is therefore made between the seller and the buyer.

## 2. BEFORE THE SALE

(a) Examination of property  
Prospective buyers are strongly advised to examine personally any property in which they are interested, before the auction takes place. Condition reports are usually available on request. Neither Christie's, Columbus Circle Wines and Spirits nor the seller provides any guarantee in relation to the nature of the property. The property is sold "as is."

(b) Catalogue and other descriptions  
Our cataloguing practice is explained in the Important Notices and Explanation of Cataloguing Practice after the catalogue entries. All statements by us in the catalogue entry for the property or in the condition report, or made orally or in writing elsewhere, are statements of opinion and are not to be relied on as statements of fact. Such statements do not constitute a representation, warranty or assumption of liability by us of any kind. References in the catalogue entry or the condition report to damage or restoration are for guidance only and should be evaluated by personal inspection by the bidder or a knowledgeable representative. The absence of such a reference does not imply that an item is free from defects or restoration, nor does a reference to particular defects imply the absence of any others. Estimates of the selling price should not be relied on as a statement that this is the price at which the item will sell or its value for any other purpose. Except as set forth in paragraph 6 below, neither Christie's, Columbus Circle Wines and Spirits nor the seller is responsible in any way for errors and omissions in the catalogue or any supplemental material.

(c) Buyer's responsibility  
All property is sold "as is" without any representation or warranty of any kind by Christie's, Columbus Circle Wines and Spirits or the seller. Buyers are responsible for satisfying themselves concerning the condition of the property and the matters referred to in the catalogue entry.

## 3. AT THE SALE

(a) Refusal of admission  
Christie's and Columbus Circle Wines and Spirits have the right, at our complete discretion, to refuse admission to the premises or participation in any auction and to reject any bid.

(b) Registration before bidding  
Prospective buyers who wish to bid in the saleroom can register online in advance of the sale, or can come to the saleroom on the day of the sale approximately 30 minutes before the start of the sale to register in person. A prospective buyer must complete and sign a registration form and provide identification before bidding. We may require the production of bank or other financial references.

(c) Bidding as principal  
When making a bid, a bidder is accepting personal liability to pay the purchase price, including the buyer's premium and all applicable taxes, plus all other applicable charges, unless it has been explicitly agreed in writing with Christie's before the commencement of the sale that the bidder is acting as agent on behalf of an identified third party acceptable to Christie's, and that Christie's will only look to the principal for payment.

(d) Absentee bids  
We will use reasonable efforts to carry out written bids delivered to us prior to the sale for the convenience of clients who are not present at the auction in person, by an agent or by telephone. Bids must be placed in the currency of the place of the sale. Please refer to the catalogue for the Absentee Bids Form. If we receive written bids on a particular lot for identical amounts, and at the auction these are the highest bids on the lot, it will be sold to the person whose written bid was received and accepted first. Execution of written bids is a free service undertaken subject to other commitments at the time of the sale and we do not accept liability for failing to execute a written bid or for errors and omissions in connection with it.

(e) Telephone bids  
Telephone bids will be accepted for lots with low-end estimates of \$1,500 and above, no later than 24 hours prior to the sale and only if the capacity of our pool of staff phone bidders allows. Arrangements to bid in languages other than English must be made well in advance of the sale date. Telephone bids may be recorded. By bidding on the telephone, prospective purchasers consent to the recording of their conversations. Christie's offers all absentee and telephone bidding services as a convenience to our clients, but will not be responsible for errors or failures to execute bids.

(f) Currency converter  
At some auctions a currency converter may be operated. Errors may occur in the operation of the currency converter and we do not accept liability to bidders who follow the currency converter rather than the actual bidding in the saleroom.

(g) Video or digital images  
At some auctions there may be a video or digital screen. Errors may occur in its operation and in the quality of the image and we do not accept liability for such errors.

(h) Reserves  
Unless otherwise indicated, all lots are offered subject to a reserve, which is the confidential minimum price below which the lot will not be sold. The reserve will not exceed the low estimate printed in the catalogue. If any lots are not subject to a reserve, they will be identified with the symbol • next to the lot number. The auctioneer may open the bidding on any lot below the reserve by placing a bid on behalf of the seller. The auctioneer may continue to bid on behalf of the seller up to the amount of the reserve, either by placing consecutive bids or by placing bids in response to other bidders. Absentee bids submitted on "no reserve" lots will, in the absence of a higher bid, be executed at approximately 50% of the low pre sale estimate or at the amount of the bid if it is less than 50% of the low pre-sale estimate.

(i) Auctioneer's discretion  
The auctioneer has the right at his absolute and sole discretion to refuse any bid, to advance the bidding in such a manner as he may decide, to

withdraw or divide any lot, to combine any two or more lots and, in the case of error or dispute, and whether during or after the sale, to determine the successful bidder, to continue the bidding, to cancel the sale or to reoffer and resell the item in dispute. If any dispute arises after the sale, our sale record is conclusive.

(j) Successful bid and passing of risk  
Subject to the auctioneer's discretion, the highest bidder accepted by the auctioneer will be the buyer and the striking of his hammer marks the acceptance of the highest bid and the conclusion of a contract for sale between the seller and the buyer. Risk and responsibility for the lot (including frames or glass where relevant) passes to the buyer at the expiration of seven calendar days from the date of the sale or on collection by the buyer if earlier.

## 4. AFTER THE SALE

(a) Buyer's premium  
In addition to the hammer price, the buyer agrees to pay to us the buyer's premium together with any applicable value added tax, sales or compensating use tax or equivalent tax in the place of sale. The buyer's premium for wine is 22.5% of the hammer price on each lot.

(b) Payment and passing of title  
Immediately following the sale, the buyer must provide us with his or her name and permanent address and, if so requested, details of the bank from which payment will be made. The buyer must pay the full amount due (comprising the hammer price, buyer's premium and any applicable taxes) not later than 4.30pm on the seventh calendar day following the sale. This applies even if the buyer wishes to export the lot and an export license is, or may be, required. The buyer will not acquire title to the lot until all amounts due to us from the buyer have been received by us in good cleared funds even in circumstances where we have released the lot to the buyer.

(c) Collection of purchases  
We shall be entitled to retain items sold until all amounts due to us, or to Christie's International plc, or to any of its affiliates, subsidiaries or parent companies worldwide, have been received in full in good cleared funds or until the buyer has satisfied such other terms as we, in our sole discretion, shall require. Subject to this, the buyer shall collect purchased lots within seven calendar days from the date of the sale unless otherwise agreed between us and the buyer.

(d) Packing, handling and shipping  
Although we shall use reasonable efforts to take care when handling, packing and shipping a purchased lot, we are not responsible for the acts or omissions of third parties whom we might retain for these purposes. Similarly, where we may suggest other handlers, packers or carriers if so requested, we do not accept responsibility or liability for their acts or omissions.

(e) Export license  
Unless otherwise agreed by us in writing, the fact that the buyer wishes to apply for an export license does not affect his or her obligation to make payment within seven days nor our right to charge interest or storage charges on late payment. We shall not be obliged to rescind a sale nor to refund any interest or other expenses incurred by the buyer where payment is made by the buyer in circumstances where an export license is required.

(f) Remedies for non payment  
If the buyer fails to make payment in full in good cleared funds within the time required by



paragraph 4(b) above, we shall be entitled in our absolute discretion to exercise one or more of the following rights or remedies (in addition to asserting any other rights or remedies available to us by law):

- (i) to charge interest at such rate as we shall reasonably decide;
- (ii) to hold the defaulting buyer liable for the total amount due and to commence legal proceedings for its recovery together with interest, legal fees and costs to the fullest extent permitted under applicable law;
- (iii) to cancel the sale;
- (iv) to resell the property publicly or privately on such terms as we shall think fit;
- (v) to pay the seller an amount up to the net proceeds payable in respect of the amount bid by the defaulting buyer; to set off against any amounts which we, or Christie's International plc, or any of its affiliates, subsidiaries or parent companies worldwide, may owe the buyer in any other transactions, the outstanding amount remaining unpaid by the buyer;
- (vi) where several amounts are owed by the buyer to us, or to Christie's International plc, or to any of its affiliates, subsidiaries or parent companies worldwide, in respect of different transactions, to apply any amount paid to discharge any amount owed in respect of any particular transaction, whether or not the buyer so directs;
- (vii) to reject at any future auction any bids made by or on behalf of the buyer or to obtain a deposit from the buyer before accepting any bids;
- (viii) to exercise all the rights and remedies of a person holding security over any property in our possession owned by the buyer, whether by way of pledge, security interest or in any other way, to the fullest extent permitted by the law of the place where such property is located. The buyer will be deemed to have granted such security to us and we may retain such property as collateral security for such buyer's obligations to us;
- (ix) to take such other action as we deem necessary or appropriate.

If we resell the property under paragraph (iv) above, the defaulting buyer shall be liable for payment of any deficiency between the total amount originally due to us and the price obtained upon resale as well as for all costs, expenses, damages, legal fees and commissions and premiums of whatever kind associated with both sales or otherwise arising from the default. If we pay any amount to the seller under paragraph (v) above, the buyer acknowledges that Christie's shall have all of the rights of the seller, however arising, to pursue the buyer for such amount.

(g) Failure to collect purchases  
Where purchases are not collected within seven calendar days from the date of the sale, whether or not payment has been made, we shall be permitted to remove the property to a third party warehouse at the buyer's expense, and only release the items after payment in full has been made of removal, storage, handling, insurance and any other costs

incurred, together with payment of all other amounts due to us.

#### **5. EXTENT OF CHRISTIE'S AND COLUMBUS CIRCLE WINES AND SPIRITS LIABILITY**

Neither the seller, Christie's, nor Columbus Circle Wines and Spirits nor any of their officers, employees or agents, are responsible for the correctness of any statement of whatever kind concerning any lot, whether written or oral, nor for any other errors or omissions in description or for any faults or defects in any lot. Except as stated below, neither the seller, Christie's, nor Columbus Circle Wines and Spirits, nor any of their officers, employees or agents, give any representation, warranty or guarantee or assume any liability of any kind in respect of any lot with regard to merchantability, fitness for a particular purpose, description, size, quality, condition, attribution, authenticity, rarity, importance, medium, provenance, exhibition history, literature or historical relevance. Except as required by local law any warranty of any kind whatsoever is excluded by this paragraph.

Notwithstanding any other terms of these Conditions of Sale, if within 30 days after the sale, Christie's and Columbus Circle Wines and Spirits have received from the original buyer of any property notice of a claim in writing that any lot is short or has suffered breakage, then Christie's and Columbus Circle Wines and Spirits in their sole discretion will decide any such claim as between the consignor and the buyer and may rescind the sale and refund the purchase price received.

The benefits of the warranty are not assignable and shall apply only to the original buyer of the lot as shown on the invoice originally issued by Christie's and Columbus Circle Wines and Spirits when the lot was sold at auction.

The original buyer must have remained the owner of the lot without disposing of any interest in it to any third party.

The buyer's sole and exclusive remedy against Christie's, Columbus Circle Wines and Spirits and the seller, in place of any other remedy which might be available, is the cancellation of the sale and the refund of the original purchase price paid for the lot. Neither Christie's, Columbus Circle Wines and Spirits nor the seller will be liable for any special, incidental or consequential damages including, without limitation, loss of profits nor for interest.

#### **6. COPYRIGHT**

The copyright in all images, illustrations and written material produced by or for Christie's, relating to a lot including the contents of this catalogue, is and shall remain at all times the property of Christie's and shall not be used by the buyer, nor by anyone else, without our prior written consent. Christie's and the seller make no representation or warranty that the buyer of a property will acquire any copyright or other reproduction rights in it.

#### **7. SEVERABILITY**

If any part of these Conditions of Sale is found by any court to be invalid, illegal or unenforceable, that part shall be discounted and the rest of the conditions shall continue to be valid to the fullest extent permitted by law.

#### **8. LAW AND JURISDICTION**

The rights and obligations of the parties with respect to these Conditions of Sale, the conduct of the auction and any matters connected with any of the foregoing shall be governed and interpreted by the laws of the jurisdiction in which the auction is held. By bidding at auction, whether present in

person or by agent, by written bid, telephone or other means, the buyer shall be deemed to have submitted, for the benefit of Christie's, to the exclusive jurisdiction of the courts of that country, state, county or province, and (if applicable) of the federal courts sitting in such state.

#### **SPECIAL NOTICE**

Though every effort is made to describe the wines in this catalogue and to describe or measure the levels of older vintages, buyers of old wines must make appropriate allowances for natural variations of ullages, conditions of corks and wine. Corks over 20 years old begin to lose their elasticity and levels can change between cataloging and sale. Old corks have also been known to fail during or after shipment.

We therefore repeat that there is always a risk of cork failure with old wines and due allowance must be made for this.

Under no circumstances can a return be accepted or an adjustment of price or credit be made after delivery except under the terms stated in paragraph 5, above, of the Conditions of Sale.

Unless otherwise stated, Bordeaux are châteaux bottled.

Important note regarding opening of cases and listing of levels: Christie's and Columbus Circle Wines and Spirits general policy is to open all wood cases and to describe levels. Bidders must make allowances for reasonable variations in ullage which may be encountered in cases older than twenty years.

# IMPORTANT NOTICES AND EXPLANATION OF CATALOGUING PRACTICE FOR WINE AND SPIRITS

## IMPORTANT NOTICES

### CHRISTIE'S INTEREST IN PROPERTY CONSIGNED FOR AUCTION

From time to time, Christie's may offer a lot which it owns in whole or in part. Such property is identified in the catalogue with the symbol  $\Delta$  next to its lot number.

On occasion, Christie's has a direct financial interest in lots consigned for sale, which may include guaranteeing a minimum price or making an advance to the consignor that is secured solely by consigned property. Such property is identified in the catalogue with the symbol  $\circ$  next to the lot number. This symbol will be used both in cases where Christie's holds the financial interest on its own, and in cases where Christie's has financed all or part of such interest through third parties. When a third party agrees to finance all or part of Christie's interest in a lot, it takes on all or part of the risk of the lot not being sold, and will be remunerated in exchange for accepting this risk. The third party may also bid for the lot. Where it does so, and is the successful bidder, the remuneration may be netted against the final purchase price. If the lot is not sold, the third party may incur a loss. Where Christie's has an ownership or financial interest in every lot in the catalogue, Christie's will not designate each lot with a symbol, but will state its interest at the front of the catalogue.

In this catalogue, if property has  $\circ \blacklozenge$  next to the lot number, Christie's guarantee of a minimum price has been fully financed through third parties.

### ALL DIMENSIONS ARE APPROXIMATE

### CONDITION REPORTS

Christie's catalogues include references to condition only in descriptions of multiple works (such as prints, books and wine). Please contact the Specialist Department for a condition report on a particular lot.

Condition reports are provided as a service to interested clients. Prospective buyers should note that descriptions of property are not warranties and that each lot is sold "as is."

### PROPERTY INCORPORATING MATERIALS FROM ENDANGERED AND OTHER PROTECTED SPECIES

Property made of or incorporating (irrespective of percentage) endangered and other protected species of wildlife are marked with the symbol  $\sim$  in the catalogue. Such material includes, among other things, ivory, tortoiseshell, crocodile skin, rhinoceros horn, whale bone and certain species of coral, together with Brazilian rosewood. Prospective purchasers are advised that several countries prohibit altogether the importation of property containing such materials, and that other countries require a permit (e.g., a CITES permit) from the relevant regulatory agencies in the countries of exportation as well as importation. Accordingly, clients should familiarize themselves with the relevant customs laws and regulations prior to bidding on any property with wildlife material if they intend to import the property into another country.

**Please note that it is the client's responsibility to determine and satisfy the requirements of any applicable laws or regulations applying to the export or import of property containing endangered and other protected wildlife material. The inability of a client to export or import property containing endangered and other protected wildlife material is not a basis for cancellation or rescission of the sale. Please note also that lots containing potentially regulated wildlife material are marked as a convenience to our clients, but Christie's does not accept liability for errors or for failing to mark lots containing protected or regulated species.**

### OPTIONS TO BUY PARCELS

A parcel, as denoted in the catalogue, is a sequence of lots carrying the same estimates and consisting of the same type of wine, quantity and bottle size.

In the sale, the buyer of the first lot of a parcel of wine will have, at the discretion of the auctioneer, the option to take any or all further lots in the parcel for the same hammer price.

If the option is not exercised on all lots in the same parcel, the auctioneer will open bidding on the next unsold lot and offer the buyer of that lot the option to take any or all of the remaining lots in the parcel sequence.

Absentee bids submitted on any lot in a parcel will, if unsuccessful, be placed on successive lots in the parcel until such bid is successful or the parcel has ended.

Bidding shall continue in the same manner until all lots in the parcel have been offered and declared sold or unsold by the auctioneer.

### CLASSIFICATIONS

Classifications in the text are for identification purposes only and are based on the official 1855 classification of the Médoc and other standard sources

All wines are bottled by the producer (Château or estate owner) unless otherwise indicated by the initials Bordeaux Bottled BB and English Bottled EB.

### ULLAGES AND CORKS OF OLD WINES

Wines are described in this catalogue as correctly as can be ascertained at time of going to press, but buyers of old wines must make appropriate allowances for natural variations of ullages, conditions of cases, labels, corks and wine. No returns will be accepted.

### ULLAGE

The amount by which level of wine is short of being full: these levels may vary according to age of the wines and, as far as can be ascertained by inspection prior to the sale, are described in the catalogue.

### SHIPPING AND COLLECTION: WINE

All wines are held at Christie's facility at The Wine Cellarage. Buyers are expected to remove their property within 7 calendar days of the auction. A Christie's Collection and Delivery Form is enclosed with each invoice and is available on the Christie's website. It is the buyer's responsibility to pick up purchases or make all shipping arrangements. After payment has been made in full, Christie's can arrange property packing and shipping at the buyer's request and expense.



*Penfolds*®

## RECORKING CLINICS

---

RETURNING IN 2016

PENFOLDS RE-CORKING CLINICS PROVIDE OWNERS OF PENFOLDS RED WINES, AGED 15 YEARS OR OLDER, WITH AN INTIMATE WINE HEALTH EXAMINATION WITH CHIEF WINEMAKER, PETER GAGO.

AFTER MANY SUCCESSFUL YEARS OF RE-CORKING PENFOLDS WINES AROUND THE WORLD, PENFOLDS RE-CORKING CLINICS ARE RETURNING TO THE UNITED STATES IN OCTOBER/NOVEMBER 2016

FOR DETAILS ON WHEN THE CLINICS ARE IN A CITY NEAR YOU  
VISIT [PENFOLDS.COM](http://PENFOLDS.COM)



**MAGNIFICENT JEWELS  
AND THE CULLINAN DREAM**

*New York, 9 June 2016*

**VIEWING**

3-8 June 2016  
20 Rockefeller Plaza  
New York, NY 10020

**CONTACT**

Rahul Kadakia  
USJewels@christies.com  
+1 212 636 2300

AN AQUAMARINE AND DIAMOND RING,  
BY CARTIER  
\$20,000-30,000

AN ART DECO AQUAMARINE AND DIAMOND BRACELET,  
BY CARTIER  
\$150,000-200,000

CHRISTIE'S

# ABSENTEE BIDS FORM

## CHRISTIE'S NEW YORK

### FINE WINES AND SPIRITS FEATURING RARITIES DIRECT FROM THE CELLARS OF CHAMPAGNE HENRIOT

FRIDAY 10 JUNE 2016  
AT 10.00 AM

20 Rockefeller Plaza  
New York, NY 10020

CODE NAME: LARKIN  
SALE NUMBER: 12268

(Dealers billing name and address must agree with tax exemption certificate. Invoices cannot be changed after they have been printed.)

**BID ONLINE FOR THIS SALE AT CHRISTIES.COM**

#### BIDDING INCREMENTS

Bidding generally opens below the low estimate and advances in increments of up to 10%, subject to the auctioneer's discretion. Absentee bids that do not conform to the increments set below may be lowered to the next bidding interval.

\$50 to \$1,000	by \$50s
\$1,000 to \$2,000	by \$100s
\$2,000 to \$3,000	by \$200s
\$3,000 to \$5,000	by \$200, 500, 800
(ie: \$4,200, 4,500, 4,800)	
\$5,000 to \$10,000	by \$500s
\$10,000 to \$20,000	by \$1,000s
\$20,000 to \$30,000	by \$2,000s
\$30,000 to \$50,000	by \$2,000, 5,000, 8,000
(ie: \$32,000, 35,000, 38,000)	
\$50,000 to \$100,000	by \$5,000s
\$100,000 to \$200,000	by \$10,000s
above \$200,000	at auctioneer's discretion

The auctioneer may vary the increments during the course of the auction at his or her own discretion.

**AUCTION RESULTS: +1 212 703 8080**

Please also refer to the information contained in Buying at Christie's.

I request Christie's to bid on the following lots up to the maximum price I have indicated for each lot. I understand that if my bid is successful, the purchase price will be the sum of my final bid plus a buyer's premium of 22.5% of the final bid price of each lot and any applicable state or local sales or use tax.

I understand that Christie's provides the service of executing absentee bids for the convenience of clients and that Christie's is not responsible for failing to execute bids or for errors relating to execution of bids. On my behalf, Christie's will try to purchase these lots for the lowest possible price, taking into account the reserve and other bids. Absentee bids submitted on "no reserve" lots will, in the absence of a higher bid, be executed at approximately 50% of the low pre-sale estimate or at the amount of the bid if it is less than 50% of the low pre-sale estimate.

If identical absentee bids are received for the same lot, the written bid received first by Christie's will take precedence.

Telephone bids will be accepted for lots with low-end estimates of \$1,500 and above, no later than 24 hours prior to the sale and only if the capacity of our pool of staff phone bidders allows.

Arrangements to bid in languages other than English must be made well in advance of the sale date.

Telephone bids may be recorded. By bidding on the telephone, prospective purchasers consent to the recording of their conversations.

Christie's offers all absentee and telephone bidding services as a convenience to our clients, but will not be responsible for errors or failures to execute bids.

All bids are subject to the terms of the Conditions of Sale and Limited Warranty printed in each Christie's catalogue.

ABSENTEE BIDS MUST BE RECEIVED AT LEAST 24 HOURS BEFORE THE AUCTION BEGINS

CHRISTIE'S WILL CONFIRM ALL BIDS RECEIVED BY FAX BY RETURN FAX. IF YOU HAVE NOT RECEIVED CONFIRMATION WITHIN ONE BUSINESS DAY, PLEASE CONTACT THE BID DEPARTMENT.

TEL: +1 212 636 2437 FAX: +1 212 636 4938 ON-LINE WWW.CHRISTIES.COM

OPTIONS TO BUY PARCELS:

A PARCEL, AS DENOTED IN THE CATALOGUE, IS A SEQUENCE OF LOTS CARRYING THE SAME ESTIMATES AND CONSISTING OF THE SAME TYPE OF WINE, QUANTITY AND BOTTLE SIZE. IN THE SALE, THE BUYER OF THE FIRST LOT OF A PARCEL OF WINE WILL HAVE, AT THE DISCRETION OF THE AUCTIONEER, THE OPTION TO TAKE ANY OR ALL FURTHER LOTS IN THE PARCEL FOR THE SAME HAMMER PRICE. IF THE OPTION IS NOT EXERCISED ON ALL LOTS IN THE SAME PARCEL, THE AUCTIONEER WILL OPEN BIDDING ON THE NEXT UNSOLD LOT AND OFFER THE BUYER OF THAT LOT THE OPTION TO TAKE ANY OR ALL OF THE REMAINING LOTS IN THE PARCEL SEQUENCE. BIDDING SHALL CONTINUE IN THE SAME MANNER UNTIL ALL LOTS IN THE PARCEL HAVE BEEN OFFERED AND DECLARED SOLD OR UNSOLD BY THE AUCTIONEER.

**12268**

Client Number (if applicable) \_\_\_\_\_ Sale Number \_\_\_\_\_

Billing Name (please print) \_\_\_\_\_

Address \_\_\_\_\_

City \_\_\_\_\_ State \_\_\_\_\_ Zone \_\_\_\_\_

Daytime Telephone \_\_\_\_\_ Evening Telephone \_\_\_\_\_

Fax (Important) \_\_\_\_\_ E-mail \_\_\_\_\_

Please tick if you prefer not to receive information about our upcoming sales by e-mail

Signature \_\_\_\_\_

If you have not previously bid or consigned with Christie's, please attach copies of the following documents. Individuals: government-issued photo identification (such as a driving licence, national identity card, or passport) and, if not shown on the ID document, proof of current address, for example a utility bill or bank statement. Corporate clients: a certificate of incorporation. Other business structures such as trusts, offshore companies or partnerships: please contact the Credit Department at +1 212 636 2490 for advice on the information you should supply. If you are registering to bid on behalf of someone who has not previously bid or consigned with Christie's, please attach identification documents for yourself as well as the party on whose behalf you are bidding, together with a signed letter of authorization from that party. New clients, clients who have not made a purchase from any Christie's office within the last two years, and those wishing to spend more than on previous occasions will be asked to supply a bank reference. We also request that you complete the section below with your bank details:

Name of Bank(s) \_\_\_\_\_

Address of Bank(s) \_\_\_\_\_

Account Number(s) \_\_\_\_\_

Name of Account Officer(s) \_\_\_\_\_

Bank Telephone Number \_\_\_\_\_



# CHRISTIE'S

## CHRISTIE'S INTERNATIONAL PLC

Patricia Barbizet, Chairwoman and CEO  
Jussi Pyykkänen, Global President  
Stephen Brooks, Deputy CEO  
Loïc Brivezac, Gilles Erulin, Gilles Pagniez,  
Héloïse Temple-Boyer,  
Sophie Carter, Company Secretary

## CHRISTIE'S EXECUTIVE

Patricia Barbizet, Chairwoman and CEO  
Jussi Pyykkänen, Global President  
Stephen Brooks, Deputy CEO

## INTERNATIONAL CHAIRMEN

François Curiel, Chairman, Asia Pacific  
Stephen Lash, Chairman Emeritus, Americas  
Viscount Linley, Honorary Chairman, EMERI  
Charles Cator, Deputy Chairman, Christie's Int.  
Xin Li, Deputy Chairwoman, Christie's Int.

## CHRISTIE'S AMERICAS

Brook Hazelton, President

## CHAIRMAN'S OFFICE

Stephen S. Lash, Chairman Emeritus  
Cyanne Chutkow, Deputy Chairman  
Brett Gorvy, Chairman  
Loïc Gouzer, Deputy Chairman  
Ben Hall, Deputy Chairman  
Nicholas Hall, Chairman  
John Hays, Deputy Chairman  
Conor Jordan, Deputy Chairman  
Maria C. Los, Deputy Chairman  
Ellanor Notides, Deputy Chairman  
Laura Paulson, Deputy Chairman  
Paul Provost, Deputy Chairman  
Jonathan Rendell, Deputy Chairman  
Caper Ryan, Deputy Chairman  
Barrett White, Deputy Chairman  
Eric Widing, Deputy Chairman  
Athena Zonars, Deputy Chairman  
Xin Li, Deputy Chairman, Asia

## SENIOR VICE PRESIDENTS

John Auerbach, Martha Baer, Heather Barnhart,  
Michael Bass, Elizabeth Beaman,  
G. Max Bernheimer, Rita Boyle,  
Bonnie Brennan, Thomas Burstein,  
Sarah Cashin, Lisa Cavanaugh, Kenneth Citron,  
Sandra Cobden, Chris Coover, Deborah Coy,  
Francois de Poortere, Carrie Dillon,  
Monica Dugot, Cathy Elkies, Sheri Farber,  
Lydia Fenet, Jennifer Glaisek Ferguson,  
Melissa Gagen, Virgilio Garza, Lisa Gluck,  
Keren Gottesman, Benjamin Gore, Karen Gray,  
Jennifer K. Hall, Darius Himes, Lori Hotz,  
Koji Inoue, Erik Jansson, Rahul Kadakia,  
Kathy Kaplan, Karen Karp, Julie Kim,  
Sharon Kim, Stefan Kist, Deepanjana Klein,  
Peter Kloman, Susan Kloman, Jonathan Laib,  
Brooke Lampley, Julie Leonhardt Latorre,  
Thomas Lecky, Daphne Lingon, Richard Lloyd,  
Gabriela Lobo, Rebecca MacGuire,  
Andrew Massad, Andrew McVinish,  
Adrien Meyer, Michelle Meyercord,  
Richard Nelson, Shira Nichaman,  
Ellanor Notides, Tash Perrin, Jason Pollack,  
Denise Ratinoff, John Reardon,  
Margot Rosenberg, Sonya Roth, Caroline Sayan,  
Xan Serafin, Brett Sherlock, Muys Snijders,  
Will Strafford, Sarah Vandeweerd,

Carina Villinger, Francis Wahlgren, Cara Walsh,  
Amy Wexler, Allison Whiting, Marissa Wilcox,  
Jody Wilkie, Tom Woolston, Steven Wrightson,  
Katsura Yamaguchi, Jennifer Zatorski

## VICE PRESIDENTS

Vlad Ashurov, Danielle Austin, Kelly Ayers,  
Diane Baldwin, Brett Banckek, Adrian Bijanada,  
Diana Bramham, Eileen Brankovic,  
Valerie Bulova, Cristina Carlisle, John Caruso,  
Angelina Chen, Pauline Cintrat, Moira Cowan  
Anne Dayton Ginette Dean, Cathy Delany,  
Elise de la Selle, Cornell DeWitt, Anna Diehl,  
Yasaman Djunic, Alexandra Duch,  
Lorena Duran, Ian Ehling, Ross Elgie,  
Jessica Fertig, John Foster, Lauren Frank,  
Sara Friedlander, Vanessa Fusco,  
Sayuri Ganepola, Joshua Glazer,  
Peggy Gottlieb, Margaret Gristina,  
Izabela Grocholski, Helena Grubestic,  
Elizabeth Hammer-Munemura,  
Minna Hanninen, William Haydock,  
Shannon Henry, Margaret Hoag, Per Holmberg,  
Andrew Holter, Jennifer Hong, Val Hoyt,  
Anne Igelbrink, Sandhya Jain Patel,  
Leanne Jagtiani, Mariana Joseph, Jessica Katz,  
Sumako Kawai, Caroline Kelly, Alexis Klein,  
David Kleiwieg de Zwaan, Christina Landaw,  
Richard LaSalle, Lisa Layfer, Christine Layng,  
Andrew Lee, Nathalie Lenci, Mary Libby,  
Molly Morse Limmer, Ryan Ludgate,  
Ann Lydecker, Laurie Lasdon Marshall,  
Hadley Miller, Erin McAndrew, Adam McCoy,  
Caroline Moustakis, Laura Nagle,  
Marysol Nieves, Rachel Orkin-Ramey,  
Allison Roberts, Joanna Ostrem,  
Elisabeth Poole Parker, Carolyn Pastel,  
Sam Pedder-Smith, Joseph Picone,  
Jennifer Pitman, Saara Pritchard,  
Carleigh Queenth, Shlomi Rabi, Kimberly Ray,  
Greg Reid, Casey Rogers, Thomas Root,  
William Russell, Arianna Savage, Stacey Sayer,  
Sari Sharaby-Swartz, Brian Shaw,  
Candida Sodre, Sasha Smith, Edwina Stitt,  
Gemma Sudlow, Bliss Summers, Peter Terela,  
Scott Torrence, Arianna Tosto, Terence Vetter,  
Beth Vilinsky, Hartley Waltman, Michal Ward,  
Simon Wills, Eric Wind, Alan Wintermute,  
Jennifer Wright, Kristen Yraola, Timothy Yule,  
Jennifer Yum, Laryssa Zalisko, Steven J. Zick

## ASSOCIATE VICE PRESIDENTS

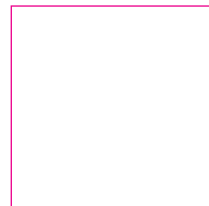
Tylee Abbott, Lauren Anderson,  
Bernadine Boisson, Anne Bracegirdle,  
Elisa Catenazzi, Ana Maria Celis, Patrick Conte,  
Leiko Coyle, Whitney Cunningham,  
Alison Curry, Anne Dayton, Caitlin Donovan,  
Kristen de Bruyn, Elise de la Selle,  
Ashish Desai, Julie Drennan, Emily Fisher,  
Heather Fowler, Sara Fox, Kristen France,  
Juarez Francis, Douglas Goldberg,  
Robert Gordy, Julia Gray, Lindsay Griffith,  
Emily Grimboll, Michael Gumener,  
Megan Guzman, Rachel Hagopian,  
Natalie Hamrick, Adeline Han, Anna Handy,  
Anne Hargrave, Andrew Huber, Katie Jacobs,  
Sima Jalili, Stephen Jones, Sung Hee Kim,  
Kirill Kluev, Kristin Kolich, Samantha Koslow,  
Paula Kowalczyk, Emma Kronman,  
James Lees, Alexandra Lenobel, David Lieu,  
Carlie Lindeberg, Alexander Locke,  
Amelia Manderscheid, Samantha Margolis,  
Patrick McGrath, Hadley Miller, Leo Montan,  
Danielle Mosse, Takaaki Murakami, Libia Nahas,  
Margaret O'Connor, Tom Orf, Ayub Patel,  
Yi Peng, Jessica Phifer, Prakash Ramdas,  
Jeremy Rhodes, Lesley-Ann Roberts, Sara Rutter,  
Kristina Ryan, Emily Sarokin, Morris Scardigno,  
Ryan Schmidt, Morgan Schoonhoven,  
Chloe Sherrill, Hannah Solomon,  
Natalie Stagnitti, Bo Tan, Lillian Vasquez,  
Mike Wang, Drew Watson, Emma Winder,  
Gretchen Yagielski, Cara Zimmerman

## CHRISTIE'S AMERICAN ADVISORY BOARD

The Lord Carrington, KG, Honorary Chairman  
John L. Vogelstein, Chairman  
Stephen S. Lash, Vice Chairman  
Brook Hazelton, President  
Herb Allen, Elizabeth Ballantine, Charlie Blaquier,  
Stephen Bronfinan, Christina Chandris,  
Bruno Eberli, Lynn Forester de Rothschild,  
Ambassador Stuart E. Eizenstat, Guido Goldman,  
Ashton Hawkins, Esq., J Tomilson Hill III,  
Barbara Jakobson, Nancy M. Kissinger,  
George Klein, Ambassador William H. Luers,  
Hon. Nicholas Platt, Li Chung Pei,  
Jeffrey E. Perelman, Tara Rockefeller, Denise Saul,  
Andrew N. Schiff, M.D., Clifford M. Sobel,  
Michael Steinhart, Archbold D. van Beuren,  
Casey Wasserman

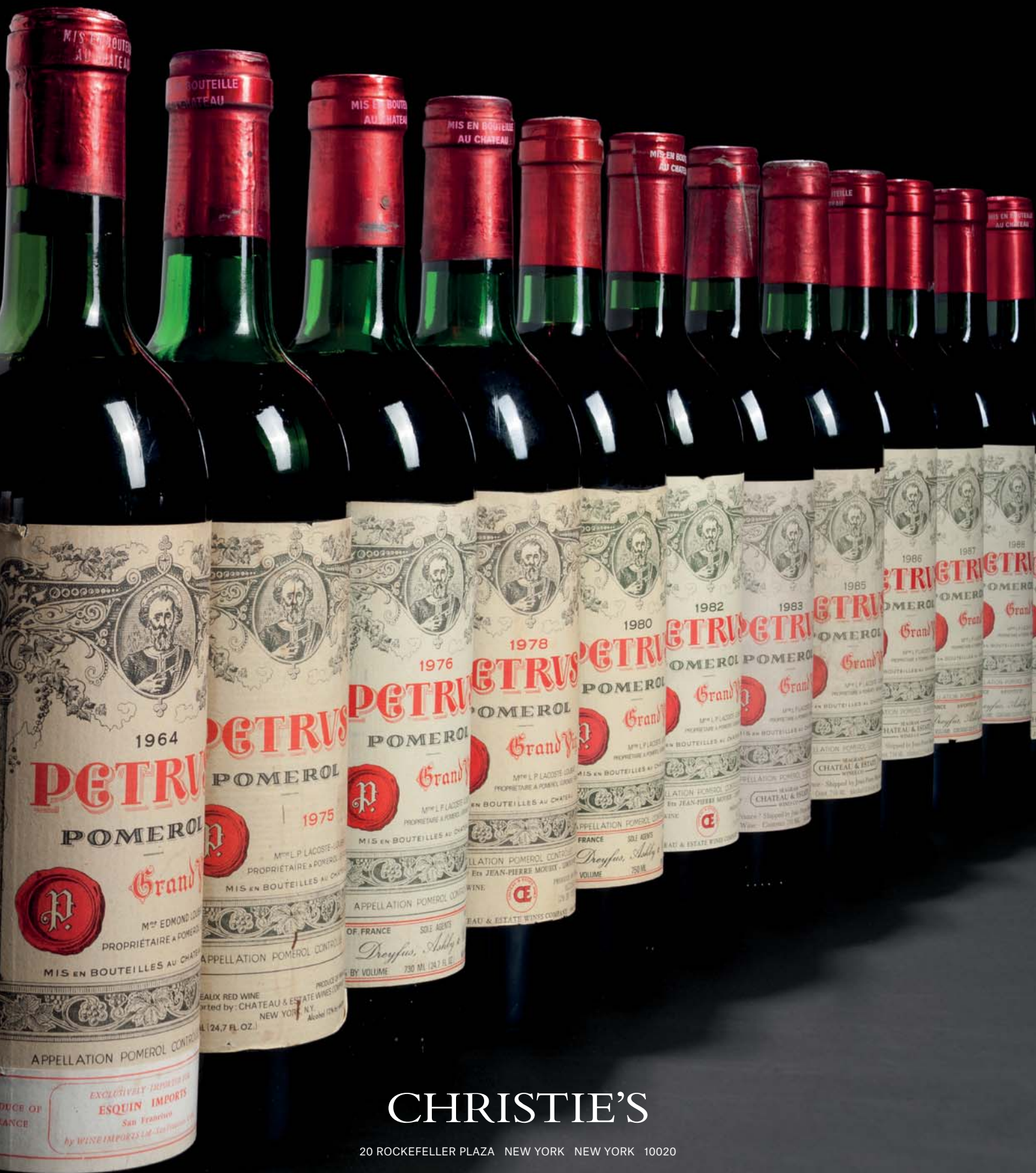
## INTERNATIONAL REPRESENTATIVES

Maura Benjamin, Meg Bowen,  
Alexandra Burroughs, Konrad Keesee,  
Lydia Kimball, Mary Libby, Juanita Madrinan,  
Brenda Norris, Kelly Perry, Betsy Ray,  
Nancy Rome



© Christie, Manson & Woods Ltd. (2016)  
Catalogue photo credits:  
Kristen Brochmann





# CHRISTIE'S

20 ROCKEFELLER PLAZA NEW YORK NEW YORK 10020